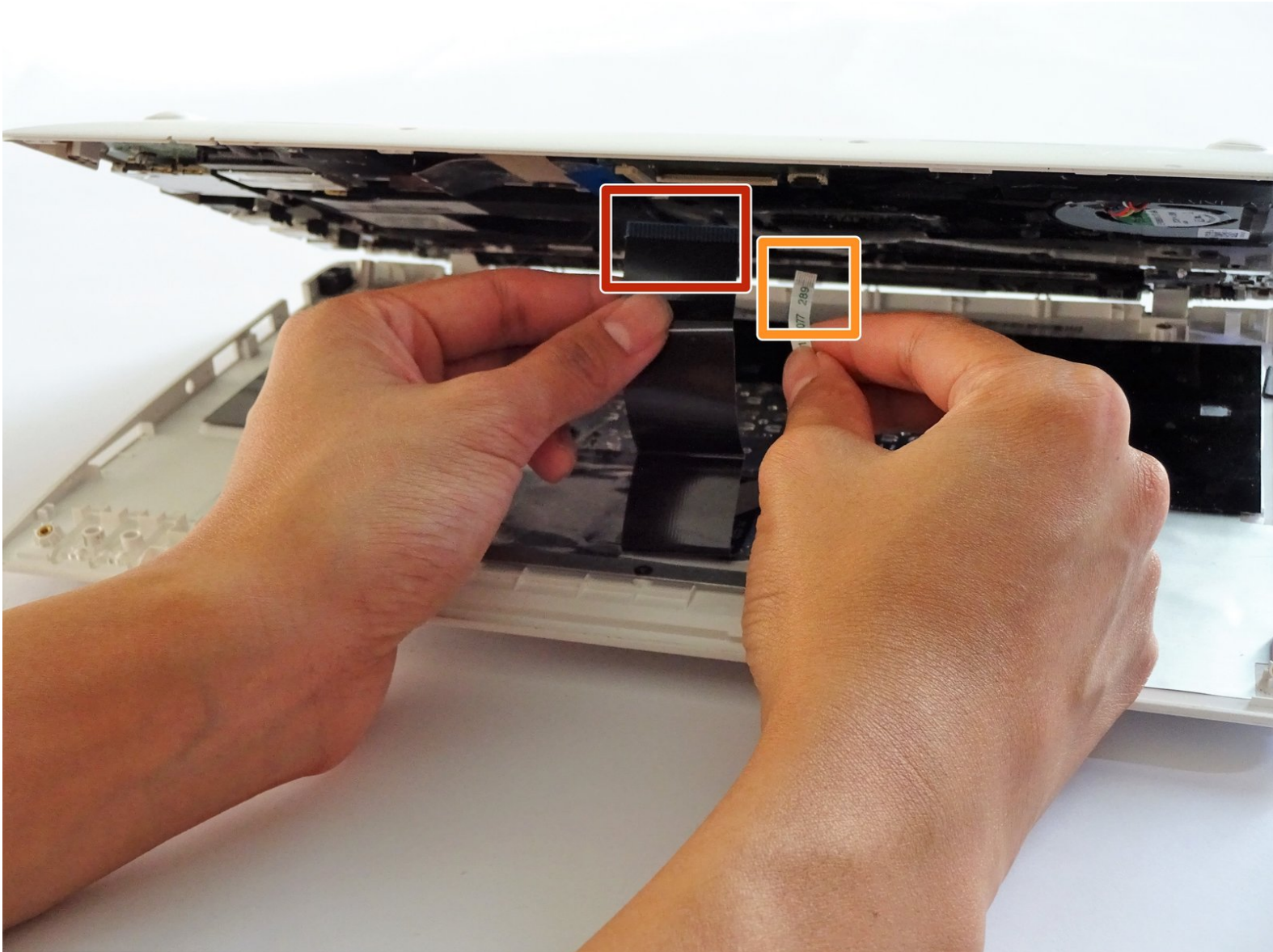




ASUS K200MA-DS01T Keyboard Replacement

This guide will help to assist in replacing the keyboard of your Asus K200MA-DS01T.

Written By: Aliyah Malapit



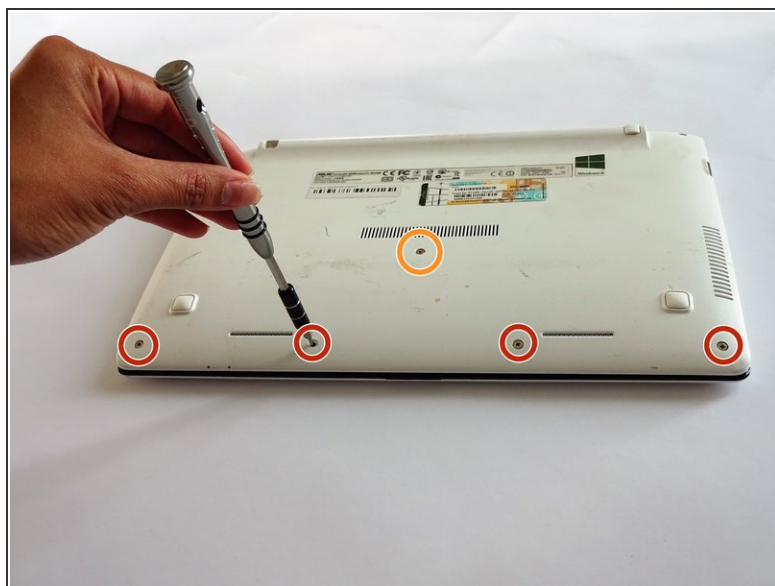
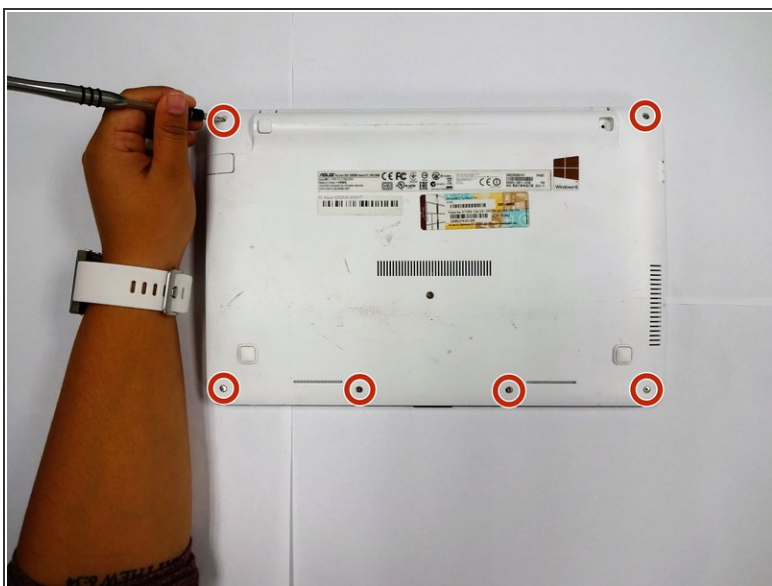
INTRODUCTION

Keyboard replacements for an Asus K200MA 11.6" can be done easily with this step-by-step guide. This island-style keyboard is compatible with 1.5mm keys within a 1.5-2mm range.

TOOLS:

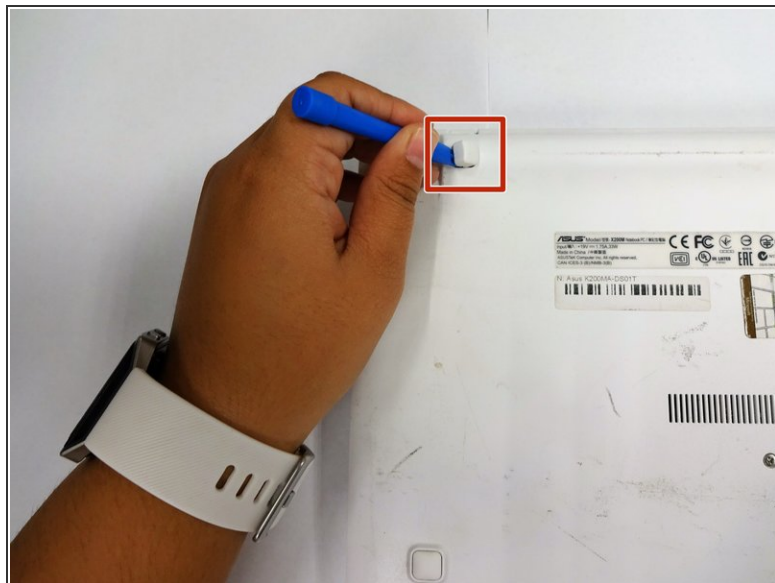
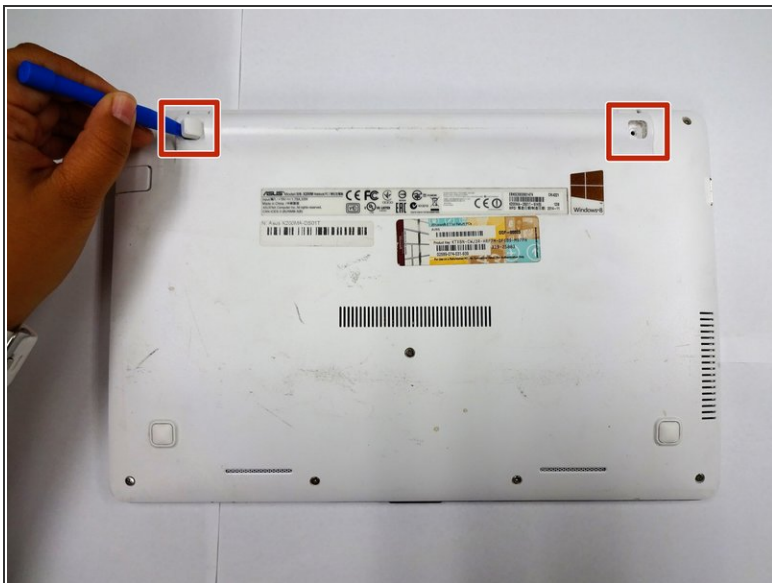
- [Spudger](#) (1)
 - [Phillips #0 Screwdriver](#) (1)
 - [iFixit Opening Tools](#) (1)
-

Step 1 — Back Panel



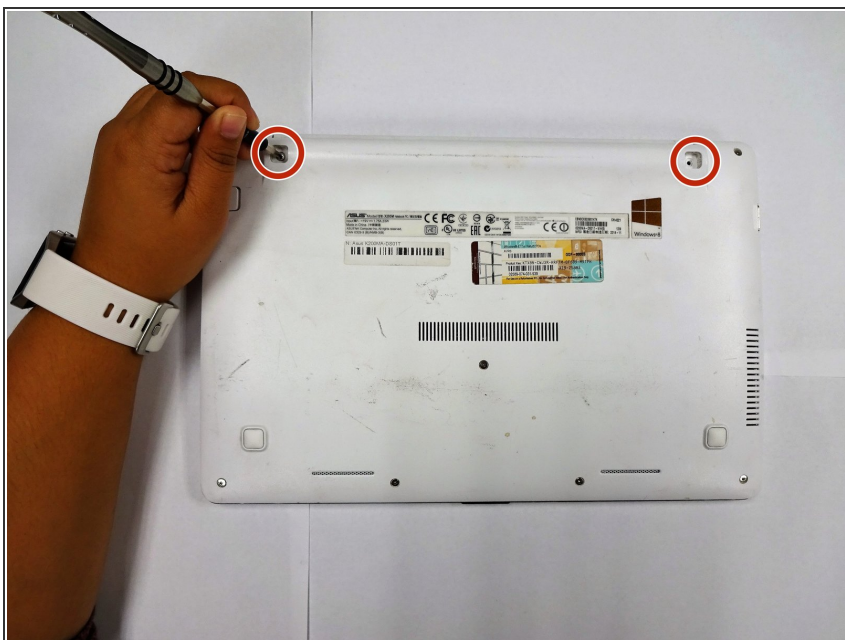
- With the opening facing you, flip the laptop over and remove the following screws from the back panel:
 - Six 4mm Phillips screws using a Phillips #0 screwdriver.
 - One 12mm Phillips screw in the center using a Phillips #0 screwdriver.

Step 2



- Using a plastic spudger, remove the two rubber stoppers closest to the hinge to reveal the screws underneath.

Step 3



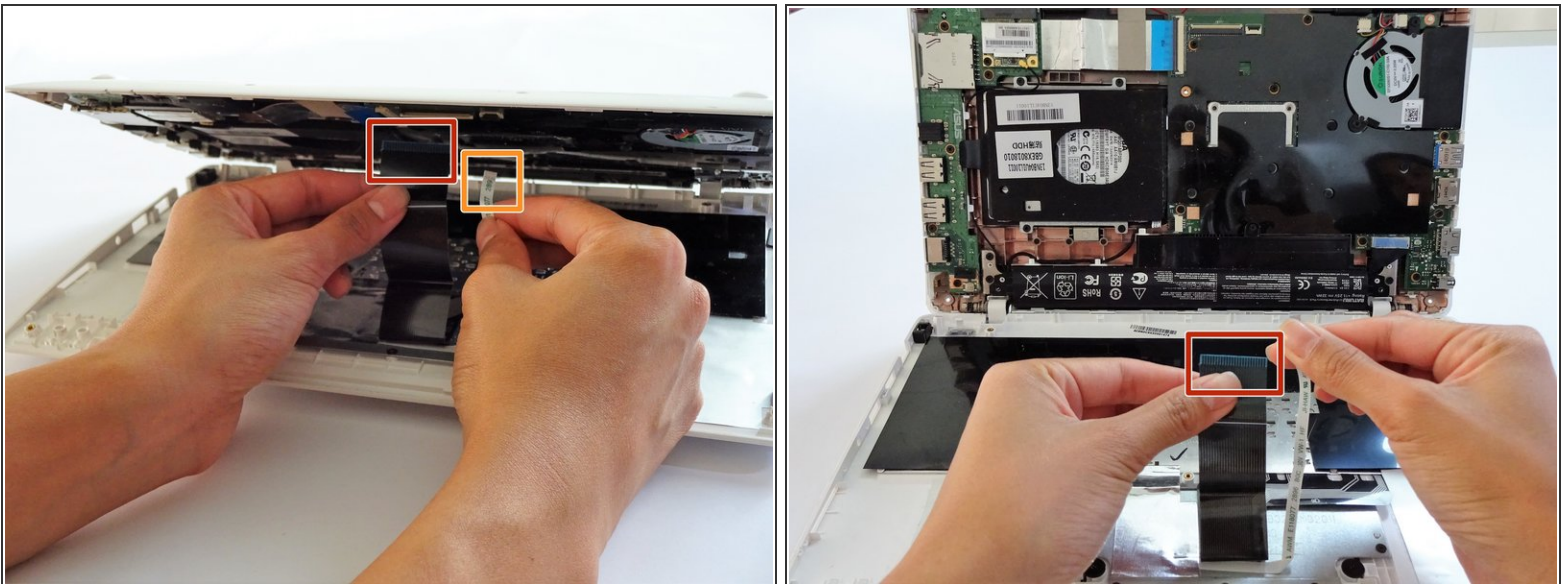
- Remove the following screws:
 - Two 4mm Phillips screws using a Phillips #0 screwdriver.

Step 4



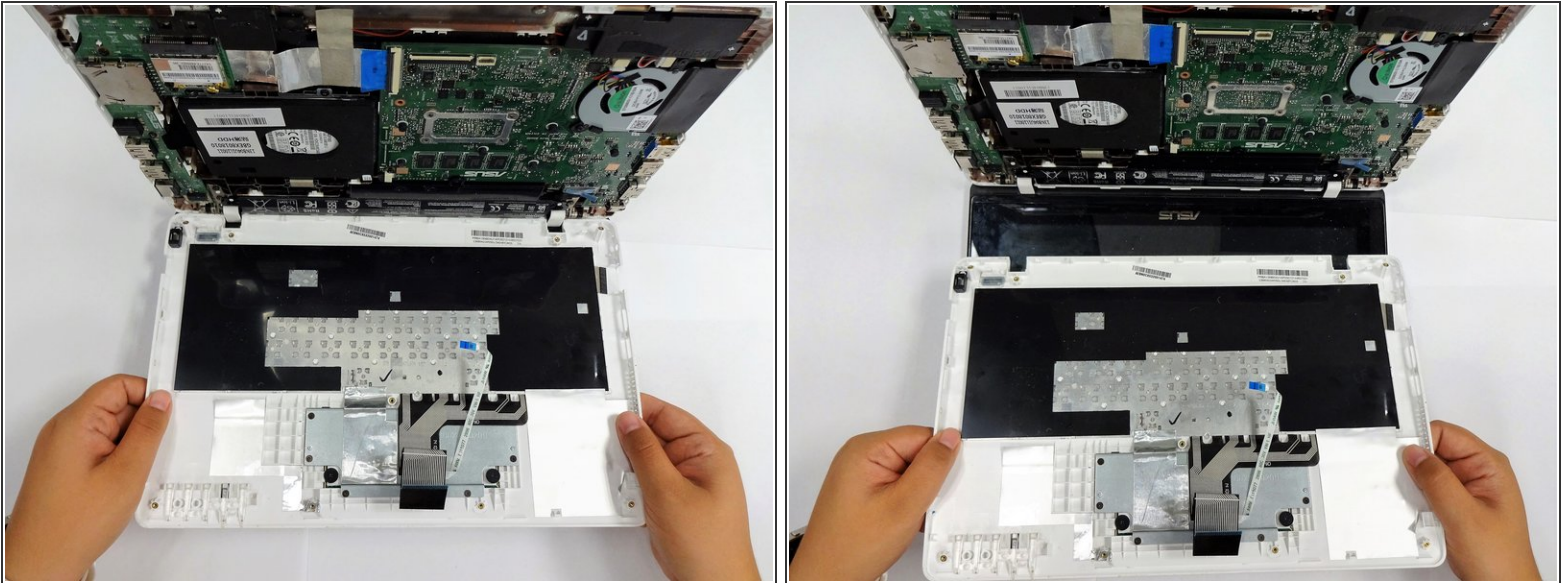
- Using a plastic spudger (and a fair amount of force), pry the back panel up from the keyboard to separate.
- ❗ You may have to use one spudger to wedge between the back panel and keyboard while using another to pry it open in a different spot.

Step 5 — Keyboard



- To disconnect the keyboard connectors from keyboard and back panel, gently pull wide keyboard connector out.
- Gently pull the narrow connector away from the keyboard.

Step 6



- Now that the keyboard connectors are unplugged, pull the keyboard off and away from the back panel hinges.

To reassemble your device, follow these instructions in reverse order.