



Acer Aspire R7-572-6423 Hard Drive Replacement

Hard Drive replacement guide for the Acer Aspire R7-572-6423.

Written By: Daniel Dempsey



INTRODUCTION

The Hard Drive is internal, and requires some disassembly to replace. Make sure you have a way to keep all of the screws you'll be taking out sorted, and be careful with the internal parts of the computer -- they can be fragile!




TOOLS:

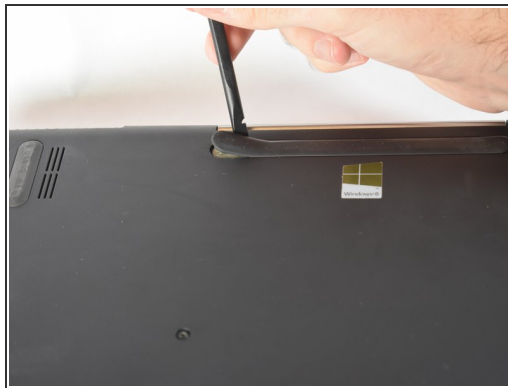
- [Spudger](#) (1)
 - [T9 Torx Screwdriver](#) (1)
 - [Phillips #0 Screwdriver](#) (1)
 - [iFixit Opening Tools](#) (1)
-

Step 1 — Hard Drive



 Turn off the laptop and disconnect the power adapter before attempting this guide. Failure to do so can result in a shock hazard.

Step 2



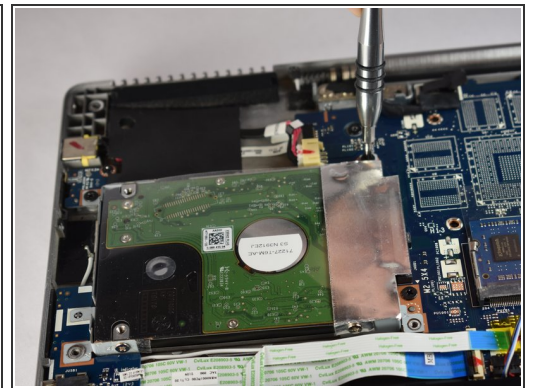
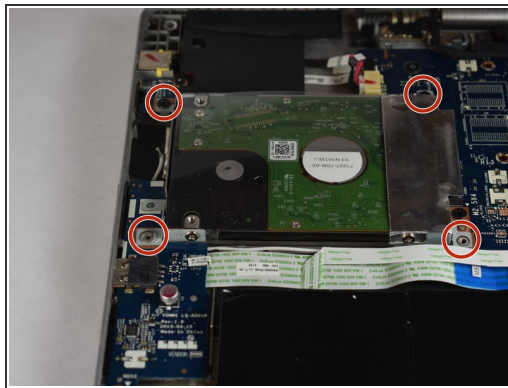
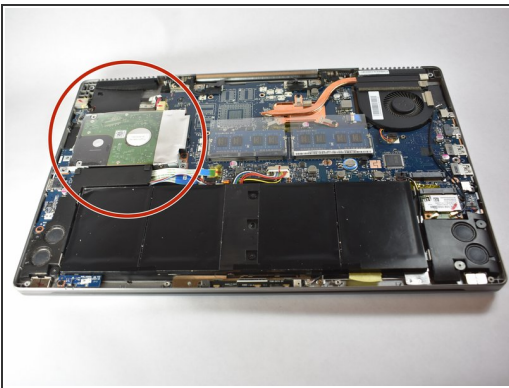
- Remove the top and middle grips that conceal 3 additional screws.
- Remove the 5 6mm T9 screws.
- Remove the 8 10mm T9 screws.

Step 3



- Remove the back cover.

Step 4



- Unscrew the four 4mm PH0 screws holding the hard drive in place.

Step 5



- Tilt the hard drive up and pull it away and out of its base.
- ⚠ Do not use too much force on the hard drive or tilt it so much that the base is broken.

To reassemble your device, follow these instructions in reverse order.