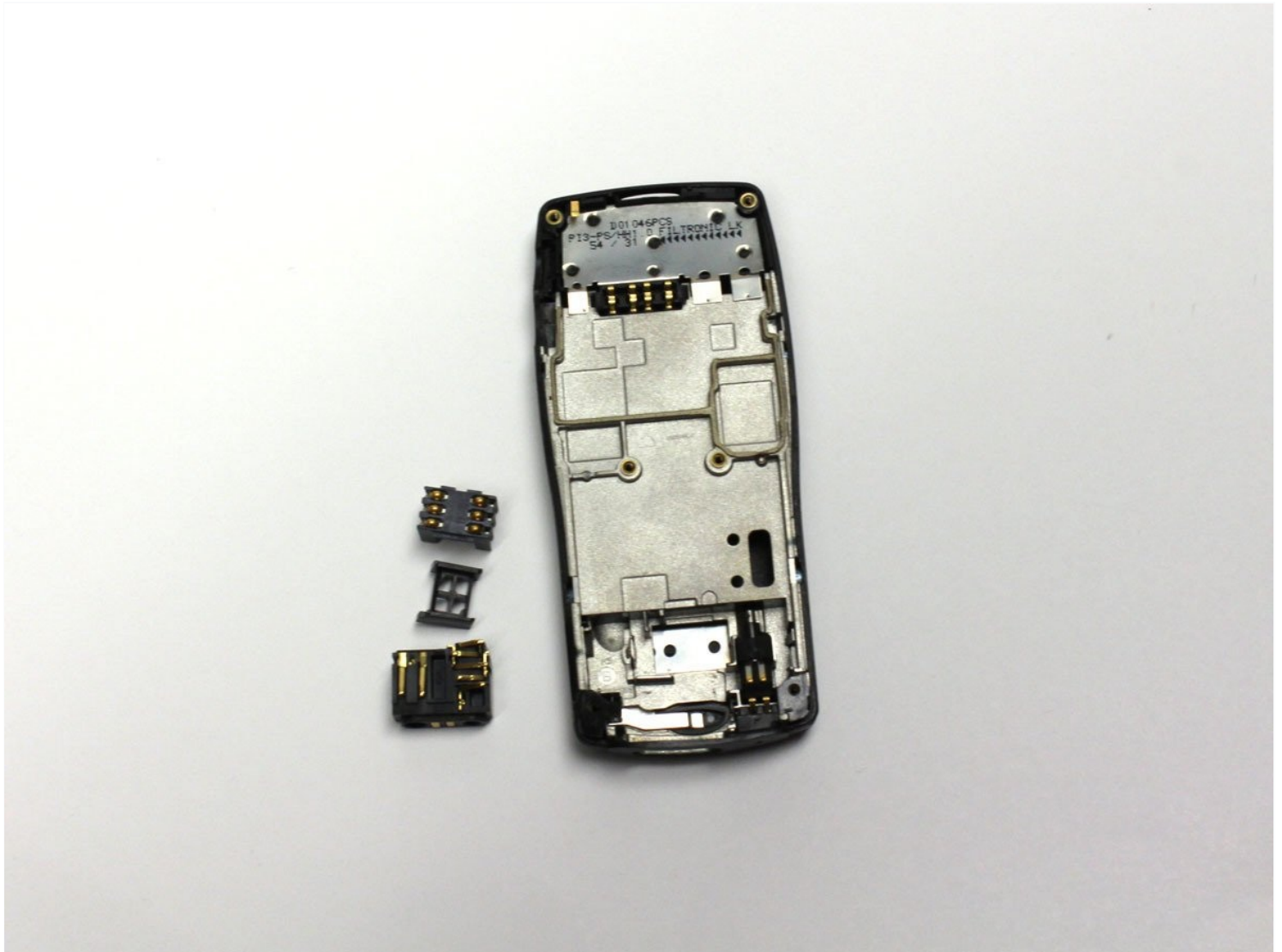




Dissassembling Nokia 8290 Charging Port

Installing a new charging port may be necessary...

Written By: Parker Niebauer



INTRODUCTION

Installing a new charging port may be necessary if you are having trouble charging your battery. Installation should only be done as a last resort, after trying other possible solutions as listed in the [Nokia 8290 Troubleshooting Guide](#). Installation requires no prior knowledge of mobile phone charging ports.

TOOLS:

[64 Bit Driver Kit](#) (1)

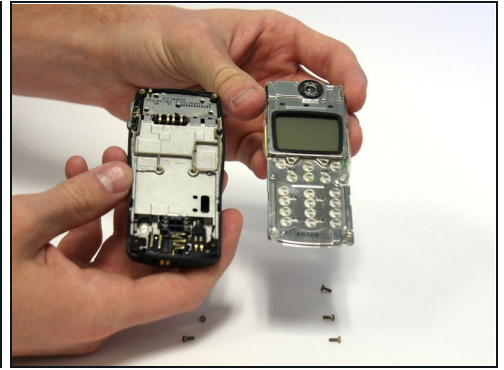
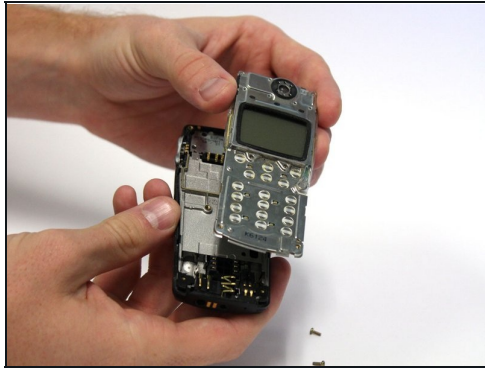
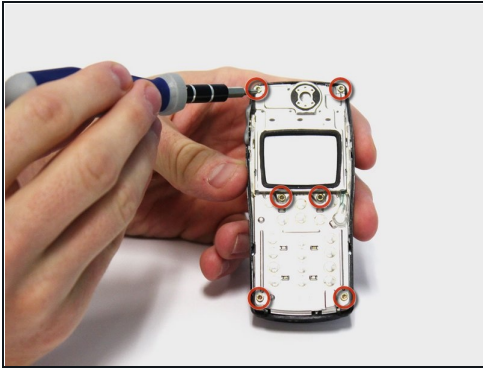
[Tweezers](#) (1)

Step 1 — Front Cover



- Locate the small button on the top of the phone.
- Depress the button.
- With your other hand, pull the front cover away from the phone.

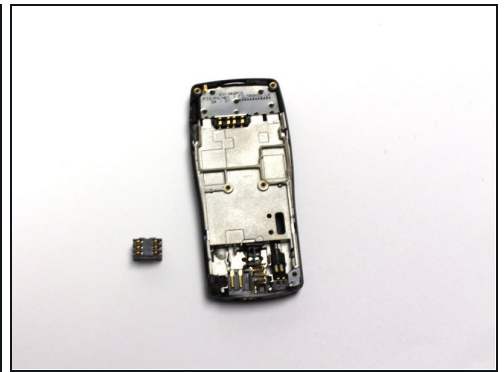
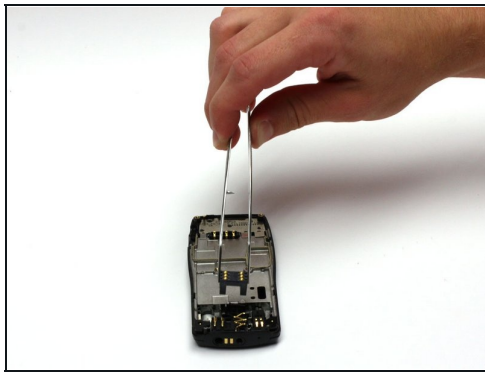
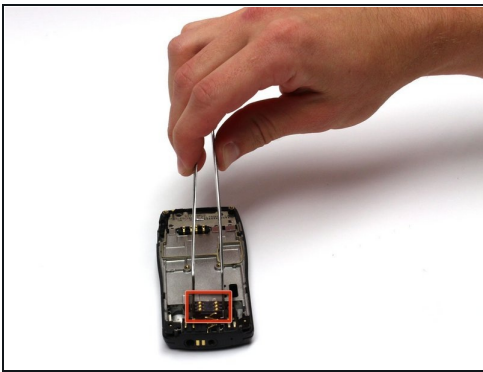
Step 2 — Installing Nokia 8290 Charging Port



- Remove all six 5.3 mm long T6 screws.
- Remove the circuit board/faceplate sub-assembly from the back of the phone.

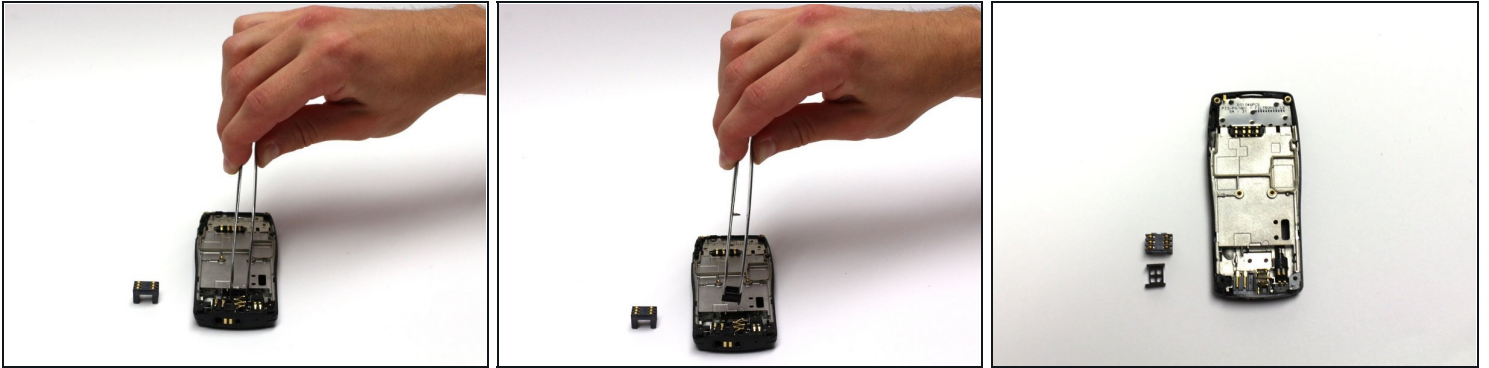
⚠ Take care to place screws in a safe location.

Step 3



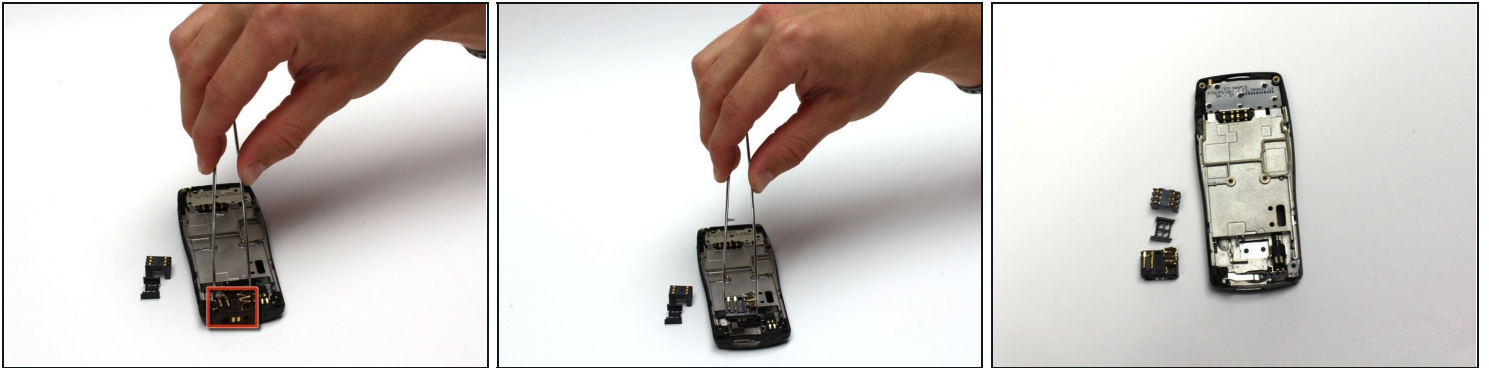
- Use [tweezers](#) to remove the indicated part.
- ① The part is black with six metal connectors. Its approximate dimensions are 12.3 mm x 8.4 mm x 8.2 mm.

Step 4



- There is another part located directly underneath the part removed in the previous step. Use tweezers to remove this part as well.
- ① The part is black with four rectangular spaces in the bottom. Its approximate dimensions are 10.4 mm x 6.6 mm x 4.5 mm.

Step 5



- After removing the two parts, locate the charging port.
- Use tweezers to remove the charging port.

To reassemble your device, follow these instructions in reverse order.