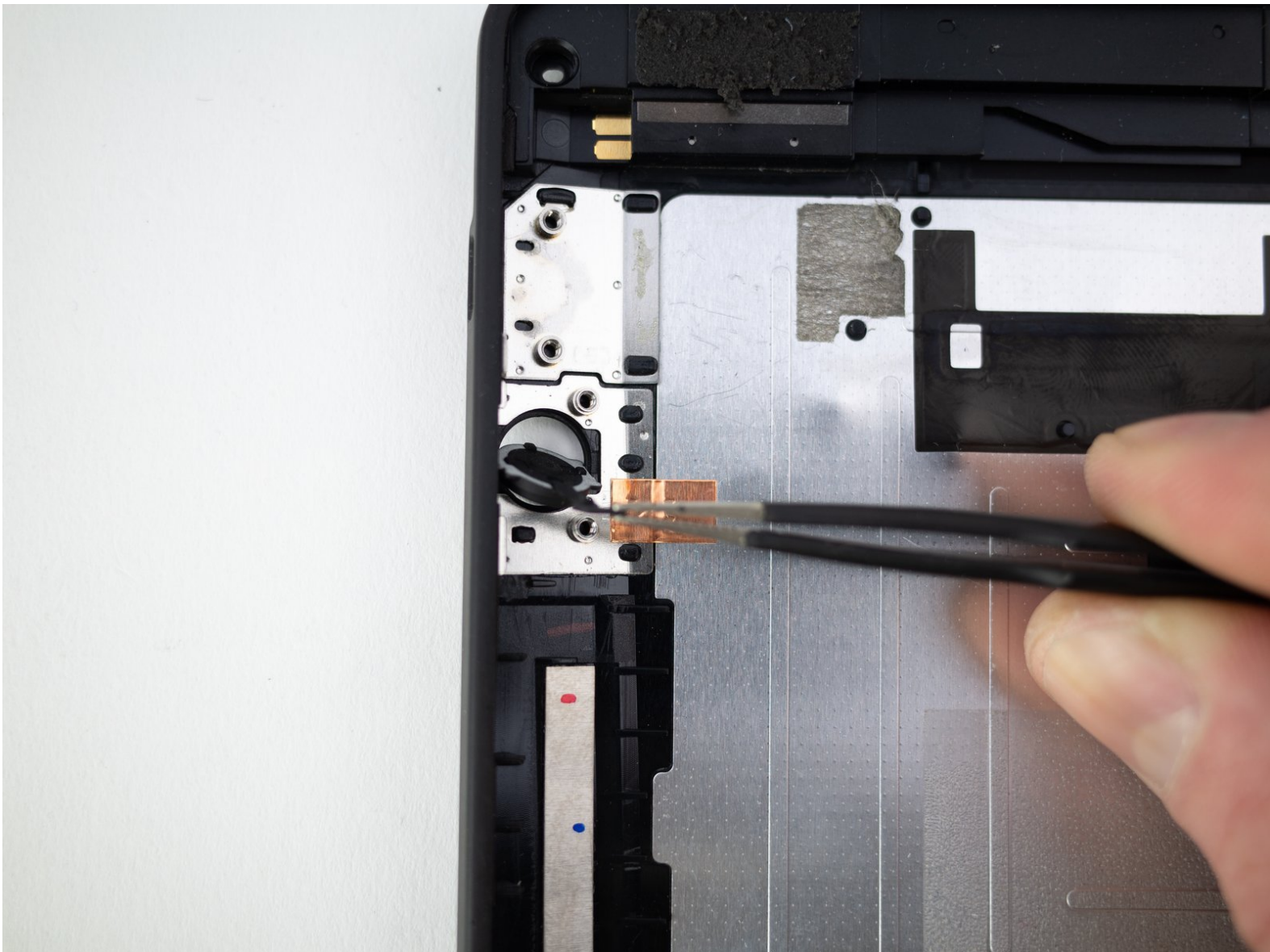




Kindle Fire HDX 7" Power Button Replacement

A free guide on how to replace the power button on a Kindle Fire HDX 7" tablet.

Written By: Blake Klein



INTRODUCTION

The first step to every electronic repair is to turn it off and back on again. But, this is only possible if your power button works.

If it's broken, follow this guide to replace the power button on your Kindle Fire HDX 7" tablet.



TOOLS:

- [iOpener Kit](#) (1)
- [Spudger](#) (1)
- [ESD Safe Tweezers Blunt Nose](#) (1)
- [T3 Torx Screwdriver](#) (1)
- [T5 Torx Screwdriver](#) (1)



PARTS:

- [Kindle Fire HDX 7" Power Button](#) (1)

Step 1 — Speaker Bezel



- Insert an opening pick underneath the speaker bezel, and slide it along the perimeter to separate it from the tablet.

 The adhesive is strong and may require an [iOpener](#), or heat gun, to soften.

Step 2



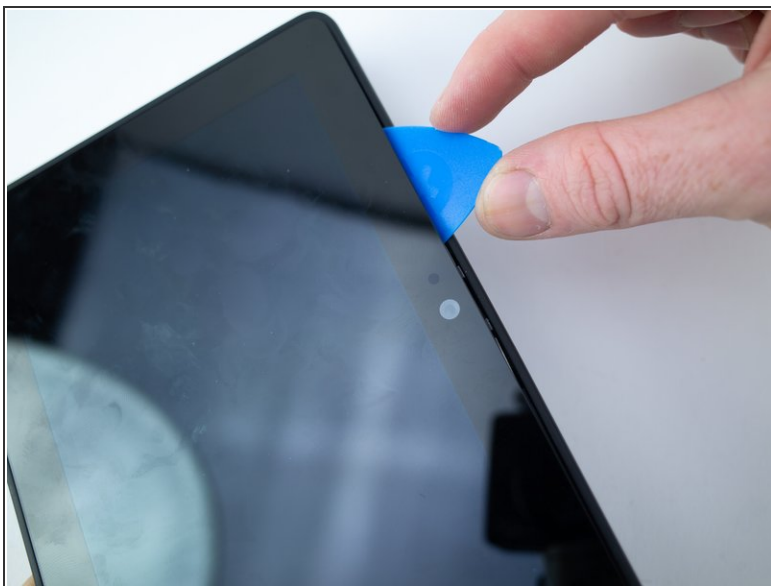
- Remove the speaker bezel.

Step 3 — Rear Panel



- Remove the six pink 3mm T3 Torx screws from the back case.

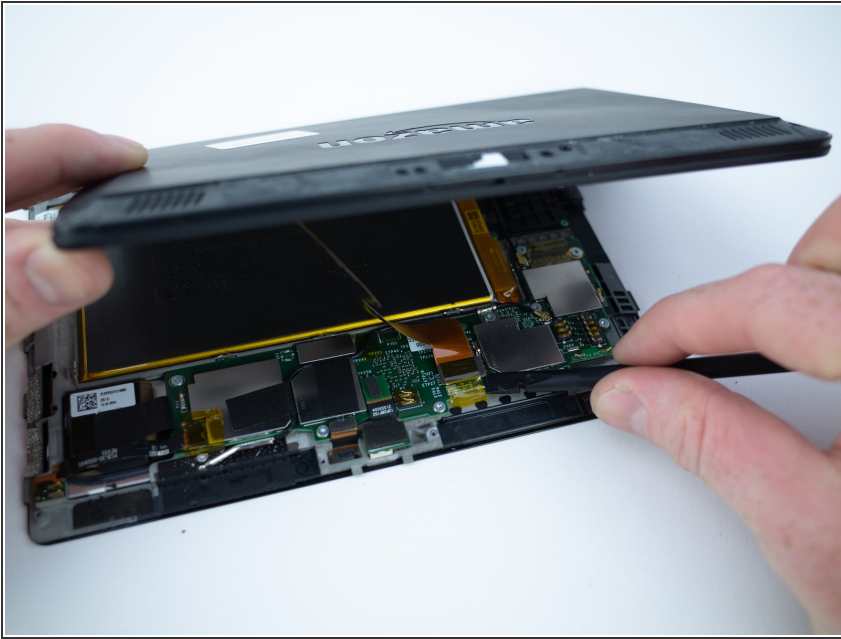
Step 4



- Wedge opening picks around the perimeter between the display and back case.
- Work the opening picks around the perimeter until the two halves disengage from each other.

⚠ Don't completely separate as the display ribbon cable still connects the two.

Step 5



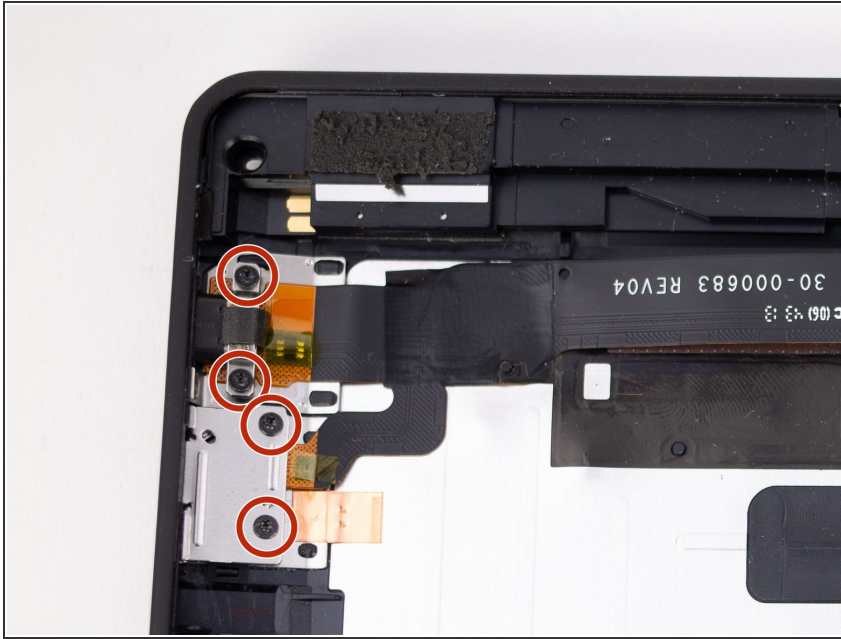
- Use the flat end of a spudger to pry up and disconnect the rear panel press-fit connector from the motherboard.

Step 6



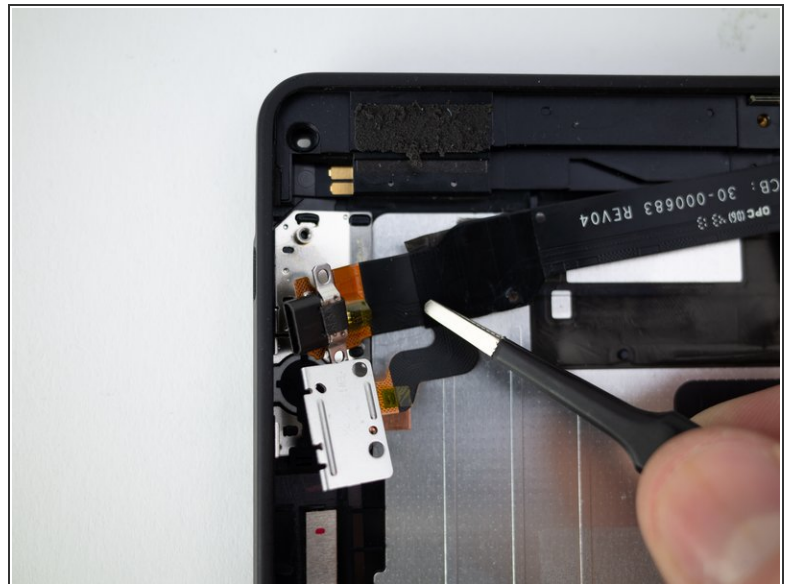
- There may be a glue strip between the battery and the outside case. Gently pry the case open and use the flat end of a spudger to separate the glue strip.

Step 7 — Micro USB Charging Port



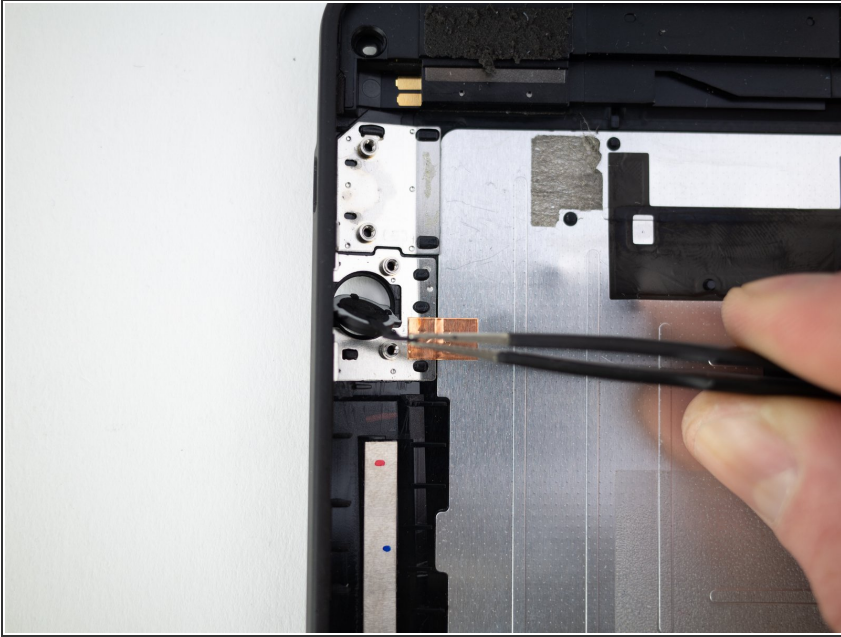
- Remove the four 2.3mm T5 Torx screws from the micro USB port and power button assembly.

Step 8



- Pry up the ribbon cable from the rear panel with the flat end of a spudger.
- Remove the micro USB port and power button ribbon cable.

Step 9 — Power Button



- Remove the power button from the rear panel.

To reassemble your device, follow these instructions in reverse order.