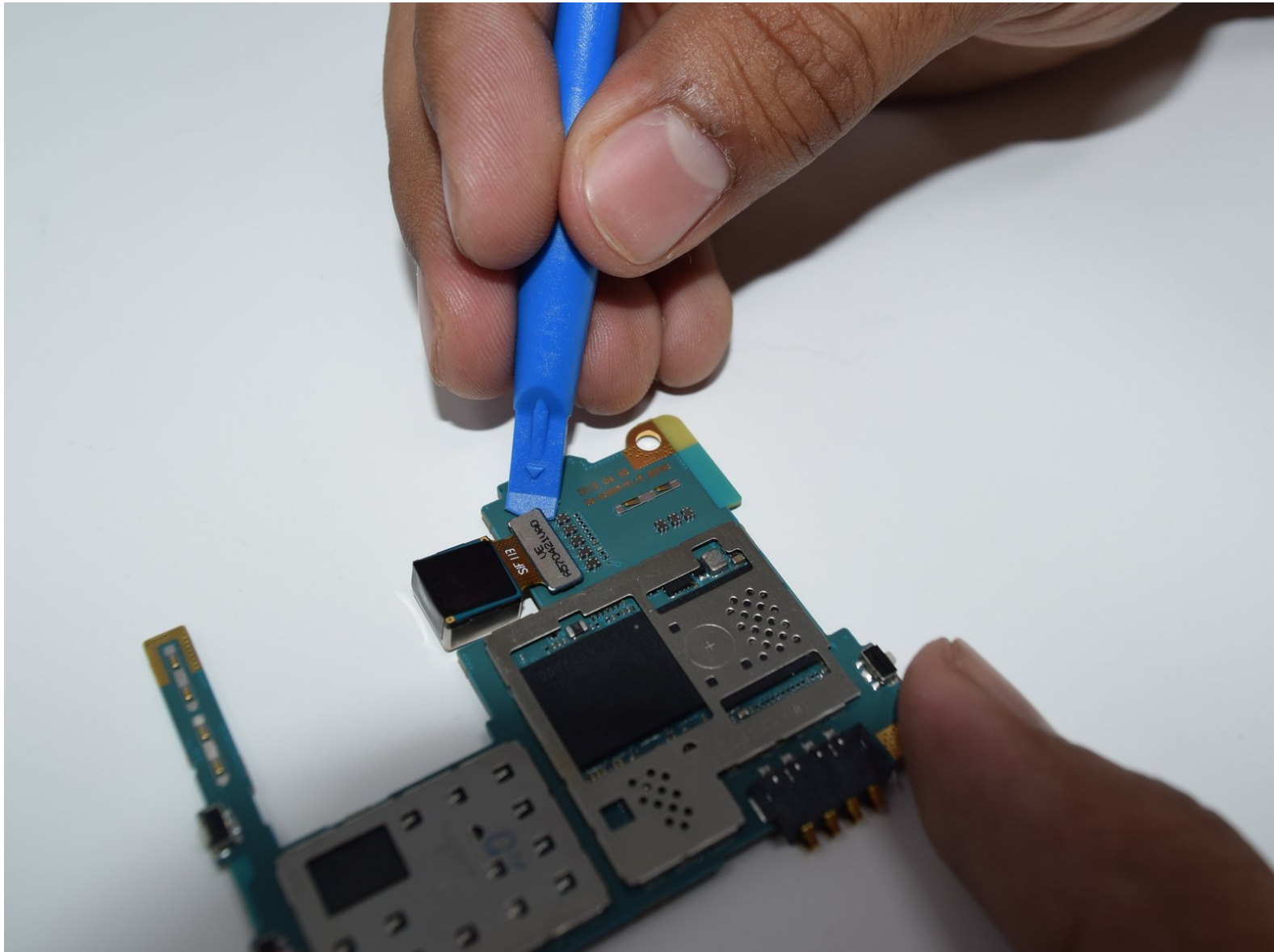




Samsung Galaxy Prime Rear Facing Camera Replacement

Replace a defective rear facing camera on the Samsung Galaxy Grand Prime.

Written By: Alex Boyle





TOOLS:

- [Spudger](#) (1)
- [Metal Spudger](#) (1)
- [Credit Card / Plastic](#) (1)

Good for seperating the screen from bezel. Could also use a guitar pick.

- [Phillips #000 Screwdriver](#) (1)
- [Heat Pad](#) (1)

Or can use a heat gun

Step 1 — Removing back cover



- Insert an opening tool or fingernail into the tab on the power button side of the phone.
- Lift on the tab to pry the back cover off of the phone.
- Continue to pry off the back all around the edges of the phone until the entire cover is fully removed.

Step 2 — Remove The Battery



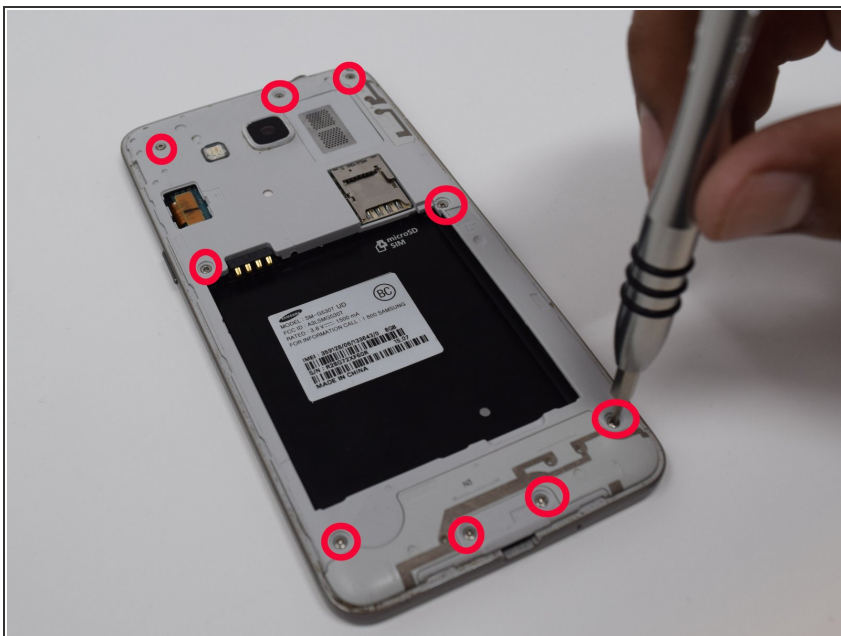
- To remove the battery, lift up on the thumb tab located on the bottom right corner of battery bay.

Step 3 — Remove The SD And LCD Ribbon Cable



- To remove the SD card and Sim card, look above the battery bay and slide the card out.
- Insert an opening tool to lift up and the plastic plate that covers the LCD ribbon cable and remove it.

Step 4 — Removing screws



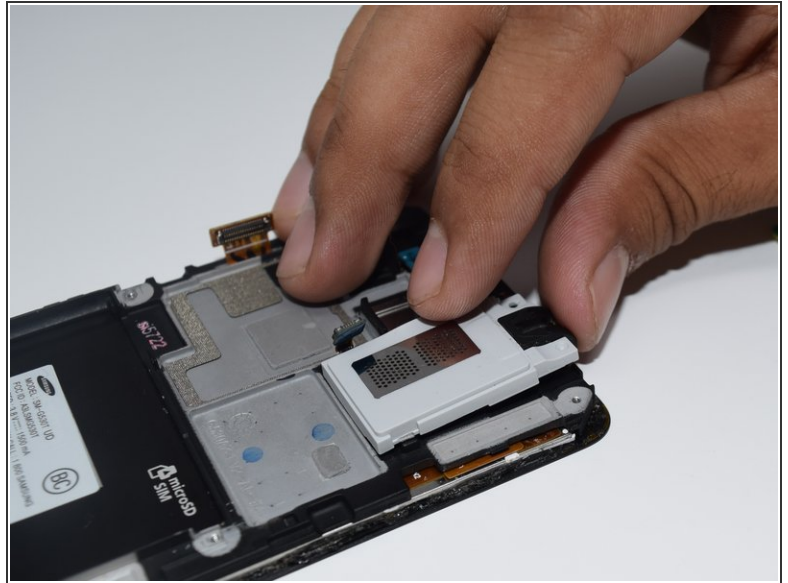
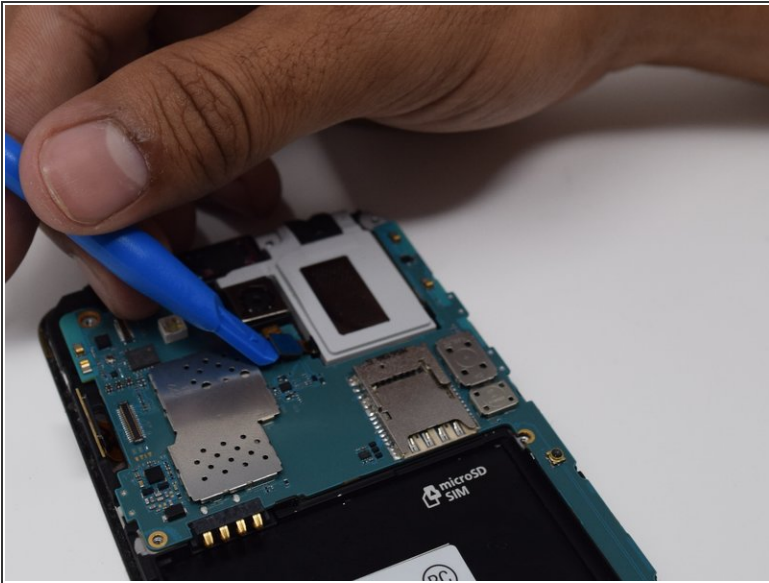
- Use a size PH000 Phillips screwdriver to unscrew the nine screws located on the back.
- ⓘ Keep the screws on a magnetic mat or in a secure location.

Step 5 — Separating Bezel and Screen



- Use a heat gun or a heating device to lightly heat the edges of the screen on the phone
- Insert an opening tool between the screen and plastic bezel, then apply pressure to separate.
- ⓘ You can also push the screen out in the empty slot where the battery was to separate.
- ⚠ It is important to be quick but careful when separating the screen and plastic bezel because the glue could cool down and re-bond the two parts.

Step 6



- Use a plastic spudger to disconnect the ribbon cable from the loudspeaker unit.
 - Lift from the top of the loudspeaker unit to release from the phone.
- i** You do not need to remove the motherboard to do this.

Step 7 — Front Facing Camera



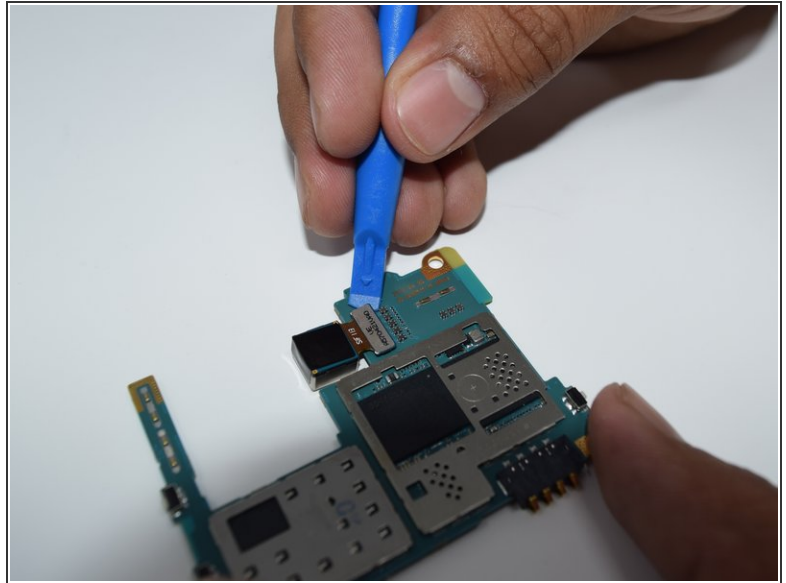
- Use a plastic spudger to disconnect the ribbon cable from the motherboard.
- The camera will be free to remove.

Step 8 — Rear Facing Camera



- Use a plastic spudger to disconnect LCD ribbon cable and front facing sensor.

Step 9



- The mother board should now be free to remove.
- Carefully lift each edge and lift to remove.
- Flip the mother board over and use a plastic spudger to disconnect the rear facing camera ribbon connector to free the camera.
- Make sure not to overly bend the ribbon connector.

To reassemble your device, follow these instructions in reverse order.