



Dell Inspiron N4050 laptop hard drive replacement

Replacing the hard drive on this Dell Inspiron N4050 laptop

Written By: Marcos Mora



INTRODUCTION

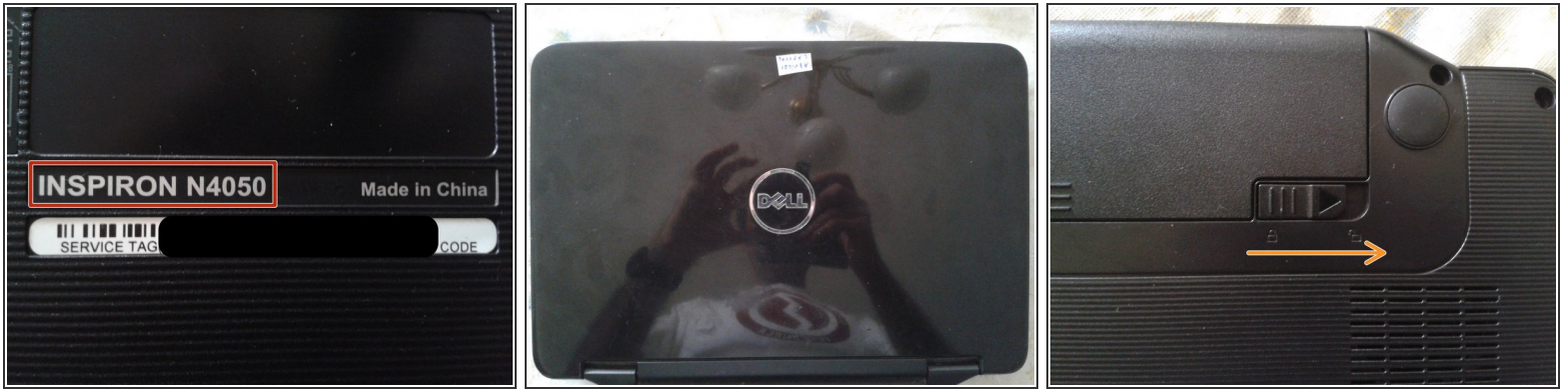
Here I show how to dismantle a client's Dell Inspiron N4050 laptop to replace their damaged hard drive for a new one



TOOLS:

- [New Item](#) (1)
-

Step 1 — Removing the battery part 1



- Check your laptop model
- Turn it over to work on the bottom of the laptop
- Open the first latch for the battery

Step 2 — Remove the battery part 2



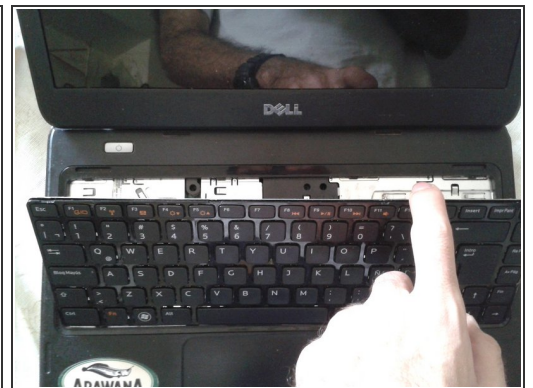
- Open the second latch in the direction that the arrow is pointing. This requires more effort than the first one.
- The battery will come out a little. Finish removing it gently.

Step 3 — Remove the bottom screws



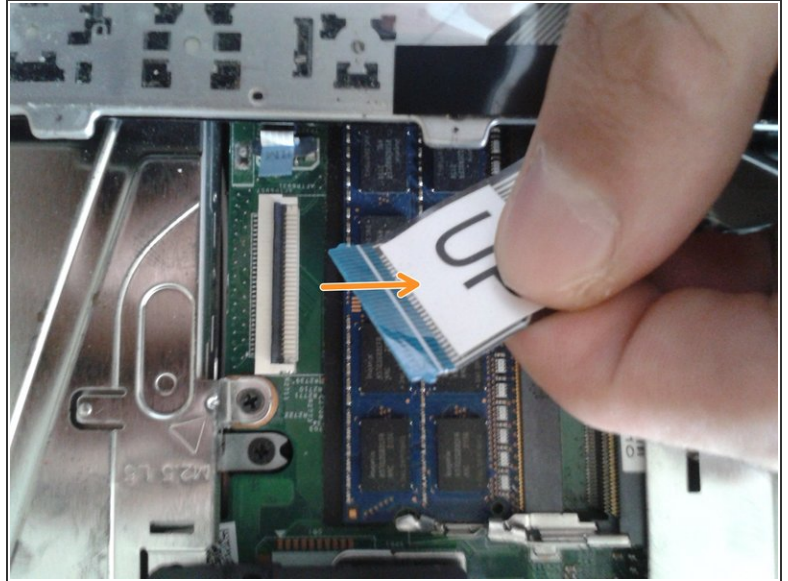
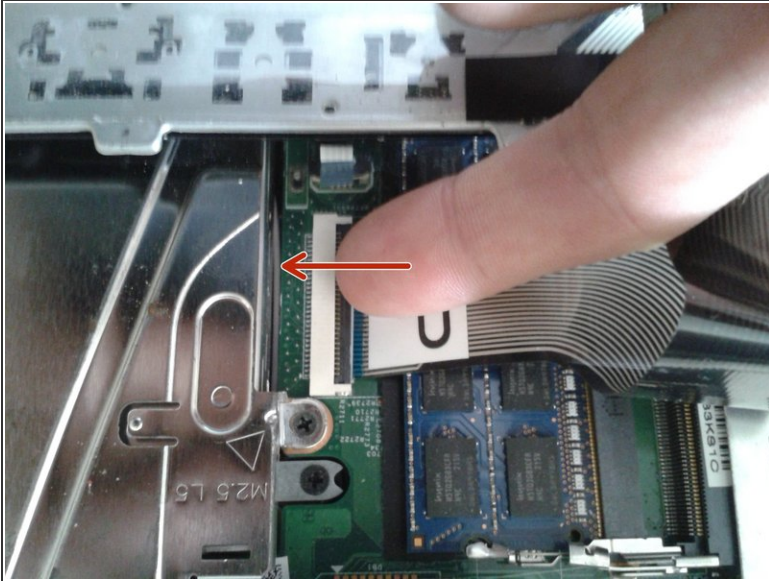
- Remove the 8 screws.
- Use a Phillips 0 screwdriver.

Step 4 — Removing the keyboard part 1



- Turn the laptop with the keyboard facing up.
- Use a flat-blade screwdriver to separate the keyboard from the computer case.
- Tilt the keyboard as shown in the image. Do not remove it completely because it is connected to a cable.

Step 5 — Remove the cable that connects the keyboard to the motherboard



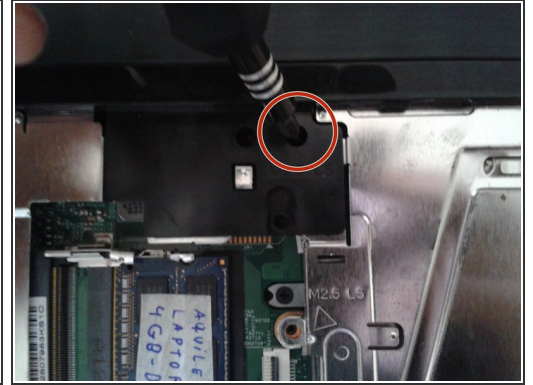
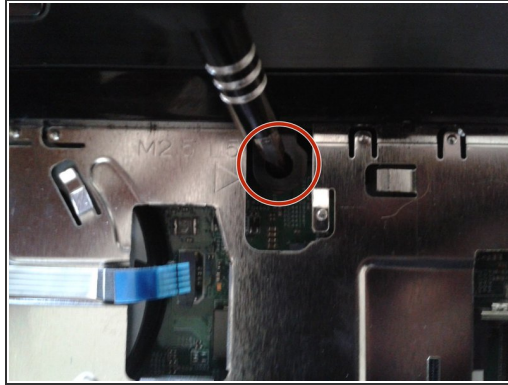
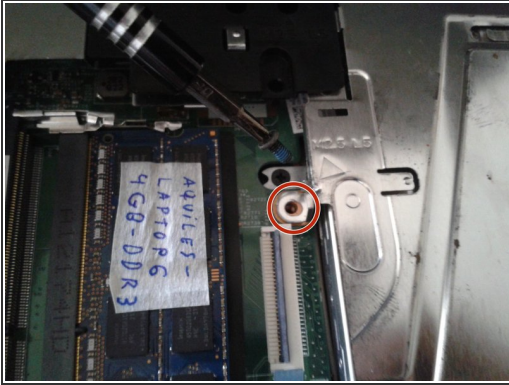
- Remove the clip that holds the cable to the motherboard.
- Remove the cable.

Step 6 — Remove the RAM



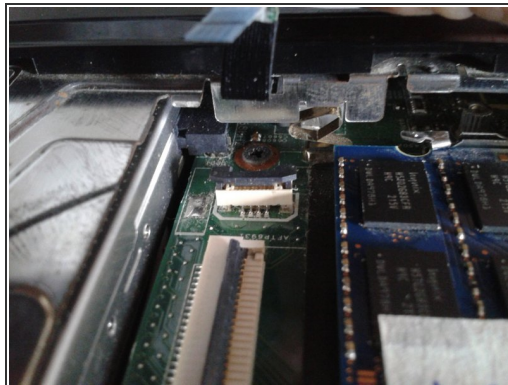
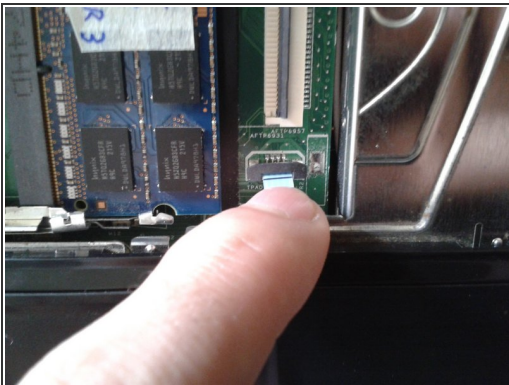
- Remove the memory cards by moving the retaining clips in the direction that the arrows are pointing.

Step 7 — Remove the screws



- Remove the 3 screws.

Step 8 — Remove the small cables



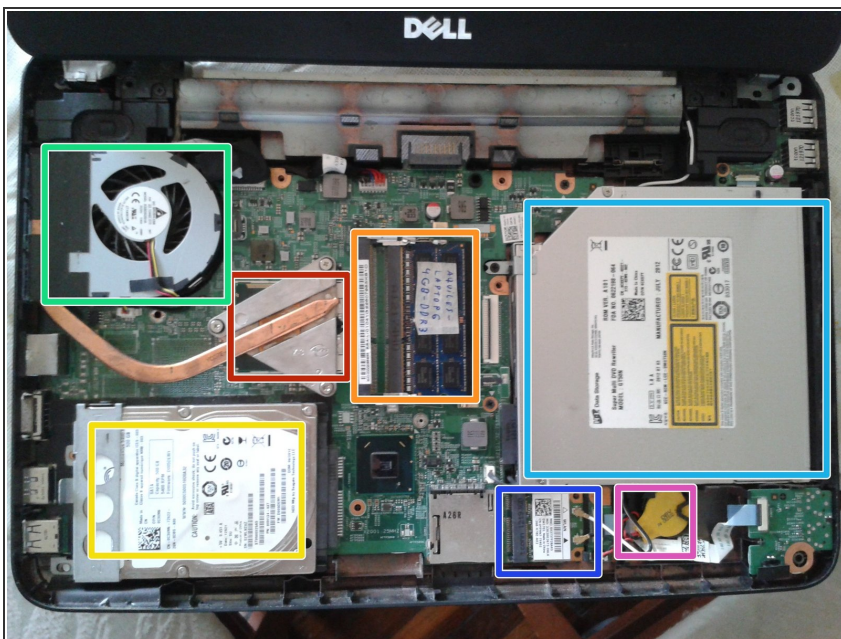
- Remove the 2 small cables.

Step 9



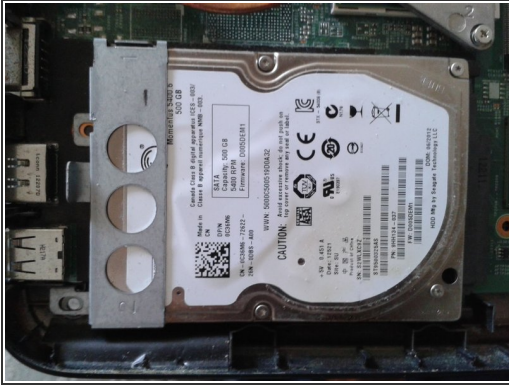
- Use a plastic tool to separate the top of the laptop.

Step 10 — Internal parts of the laptop



- CPU
- DDR3 RAM memory, 2 slots available
- SATA hard disc
- Heatsink
- DVD unit
- Wireless network card
- Battery for the internal clock

Step 11 — Hard Drive



- The hard disc does not have this support to the mother board from the factory. It is only attached by the SATA connector.
- Height is 8.5 mm

To reassemble your device, follow these instructions in reverse.