



# Google Pixelbook Display Replacement

Follow this free guide to learn how to replace the display on a Google Pixelbook.

Written By: Blake Klein



# INTRODUCTION

The display on the Google Pixelbook is secured with strong adhesive and requires some careful prying to separate it from the case. Using heat from a hairdryer, or an iOpener, may help soften the adhesive for easier removal.



## TOOLS:

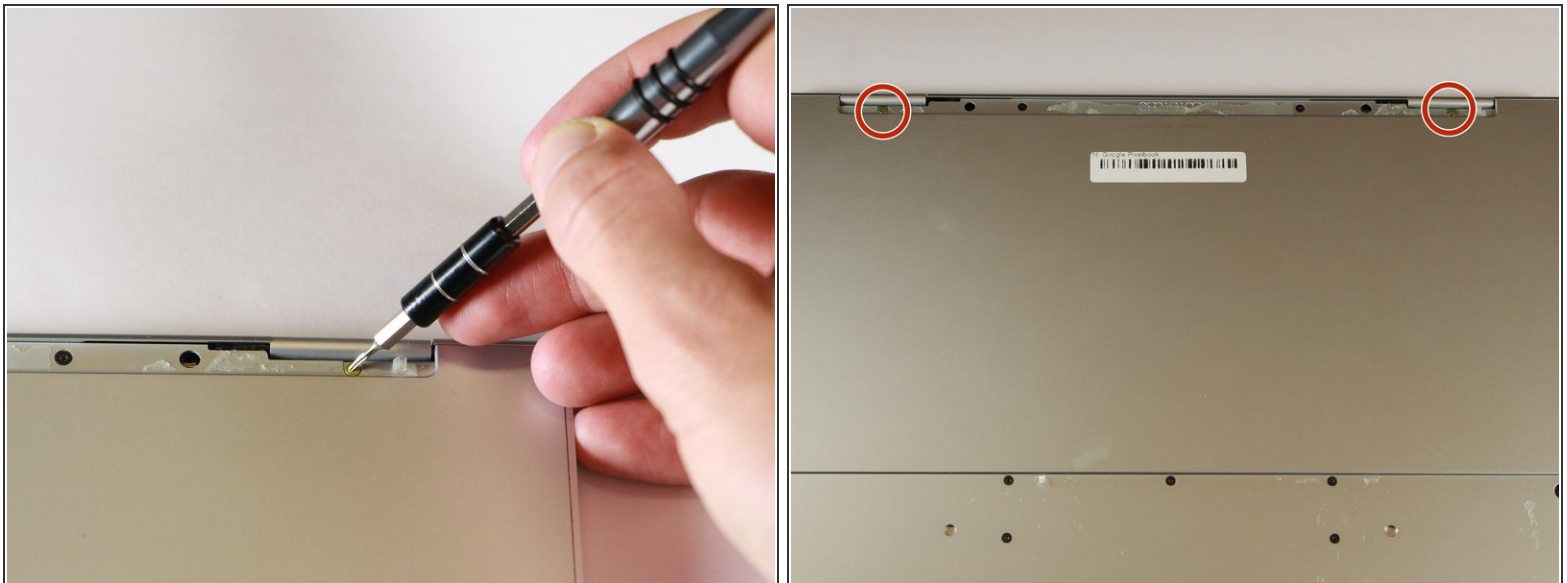
- [iFixit Opening Tools](#) (1)
  - [Metal Spudger \(optional\)](#) (1)
  - [T3 Torx Screwdriver](#) (1)
  - [T5 Torx Screwdriver](#) (1)
  - [Spudger](#) (1)
  - [iSlack](#) (1)
  - [iFixit Opening Picks set of 6](#) (1)
-

## Step 1 — Battery (Back Panel)



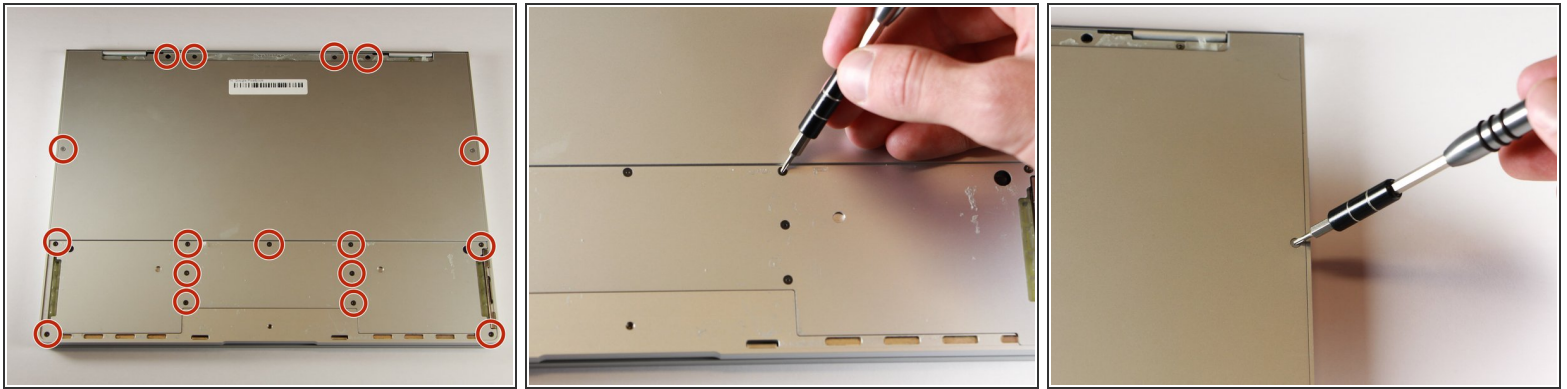
- Use the iFixit opening tools or a metal spudger to pry the rubber covers off the back of your Pixelbook.
- Peel the linings off completely until the back of the Pixelbook looks bare.

## Step 2



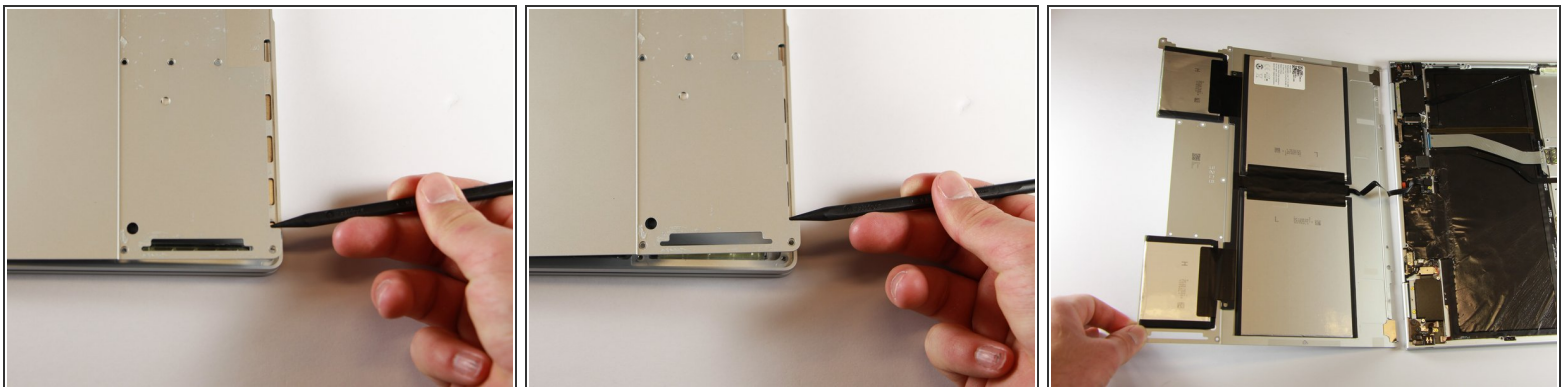
- Remove the two yellow 2.0mm screws by using a T3 Torx screwdriver.

## Step 3



- Remove the seventeen 3.0mm T5 Torx screws from the bottom panel.

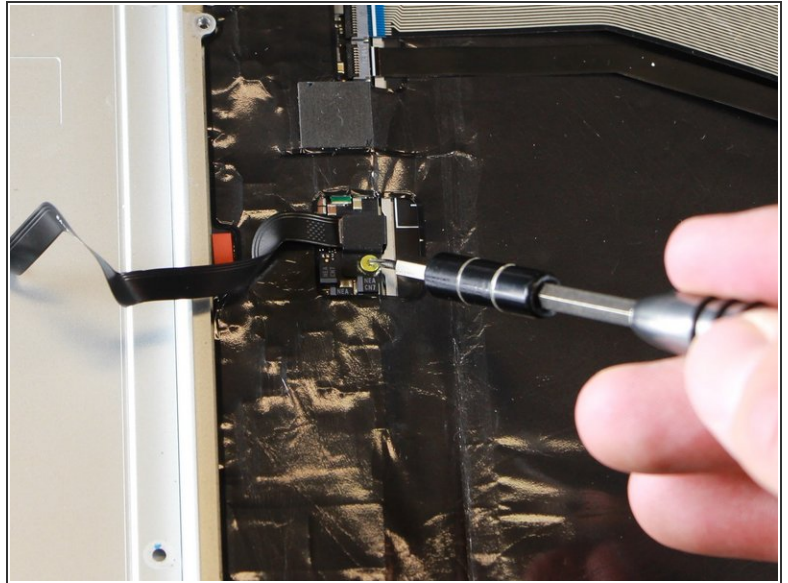
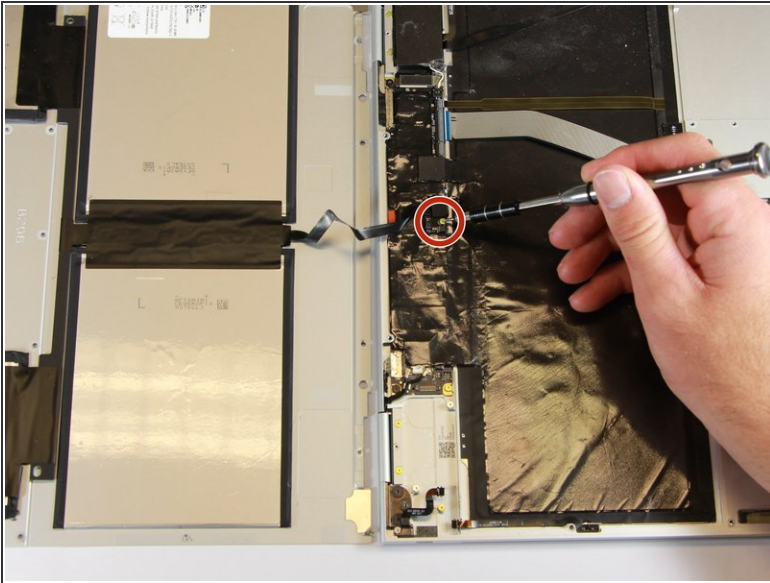
## Step 4



- Use the nylon spudger to pry the edge of the Pixelbook up until you can grab the edge with your fingers.
- Open the back panel completely and lay it flat so you see the whole inside of the computer.

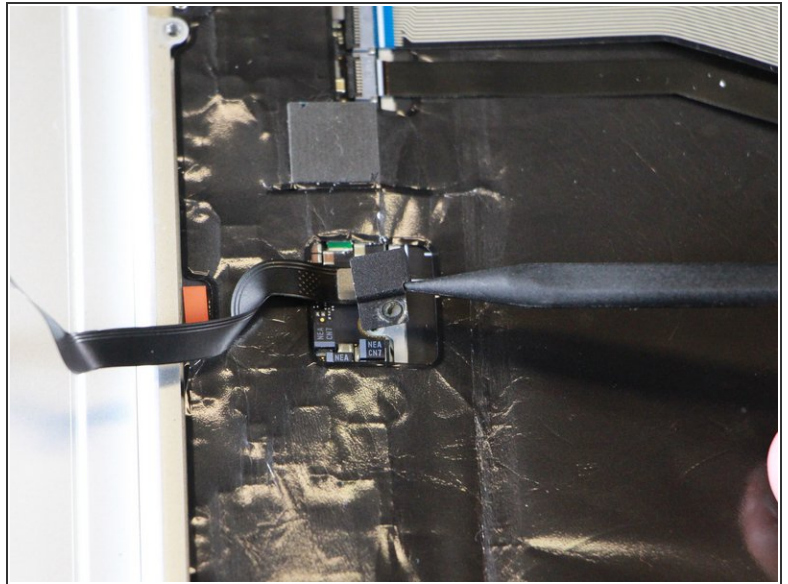
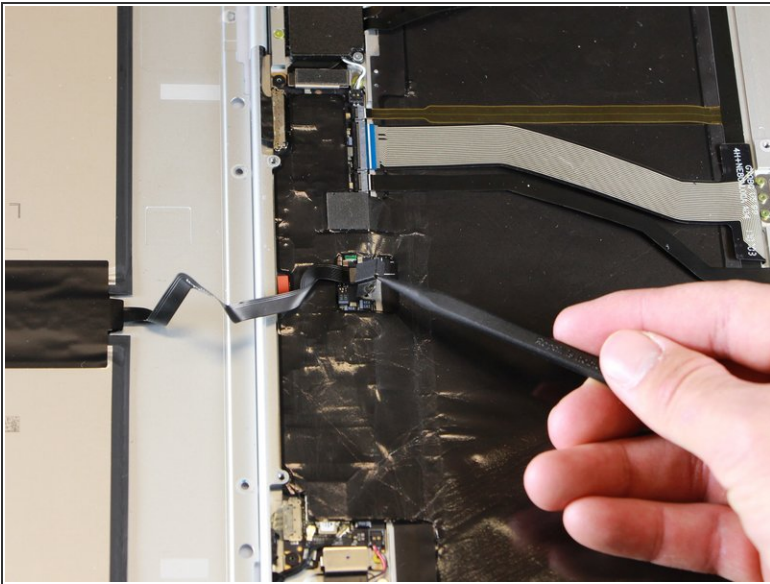


## Step 5



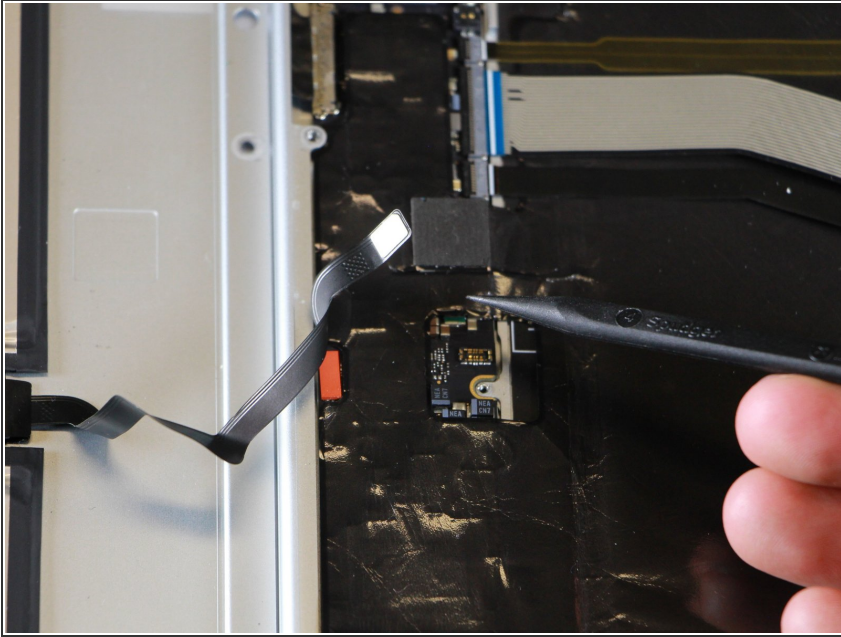
- Remove the yellow 2.0mm screw from the middle of the panel by using the T3 Torx screwdriver to turn the screw counterclockwise.

## Step 6



- Remove the small, black casing by using the spudger to lift it up from its place.

## Step 7



- Disconnect the flat, black cord from the main component by using a spudger to push it out of the slot, or by using your hand to carefully pull it out.
- Your back panel is now free from the main component.

## Step 8 — Display Board



- Use an iSclack, or suction cup, to lift up the corner of the display from the case.




## Step 9



- Insert an opening pick into the gap between the display and case.
- Repeat this procedure on other side.

## Step 10



- Using an opening pick, slowly pry up on the display until it separates.
-  Don't completely remove the display as ribbon cables connect it to the case.

## Step 11



- Use the pointed end of spudger to flip up the small locking flap on the [ZIF](#) connector.
- Remove the display ribbon cable from the socket.

## Step 12



- Use the pointed end of a spudger to flip up the small locking flap on the [ZIF](#) connector.
- Remove the display ribbon cable from the socket.



## Step 13



- Flip the display over and lay it flat on the keyboard.

## Step 14



- Use a pair of tweezers to grab the clip on the [display connector](#) and swing it over to the other side of the socket.
- Pull on the clip to disconnect the display.
- Remove the display.

To reassemble your device, follow these instructions in reverse order.