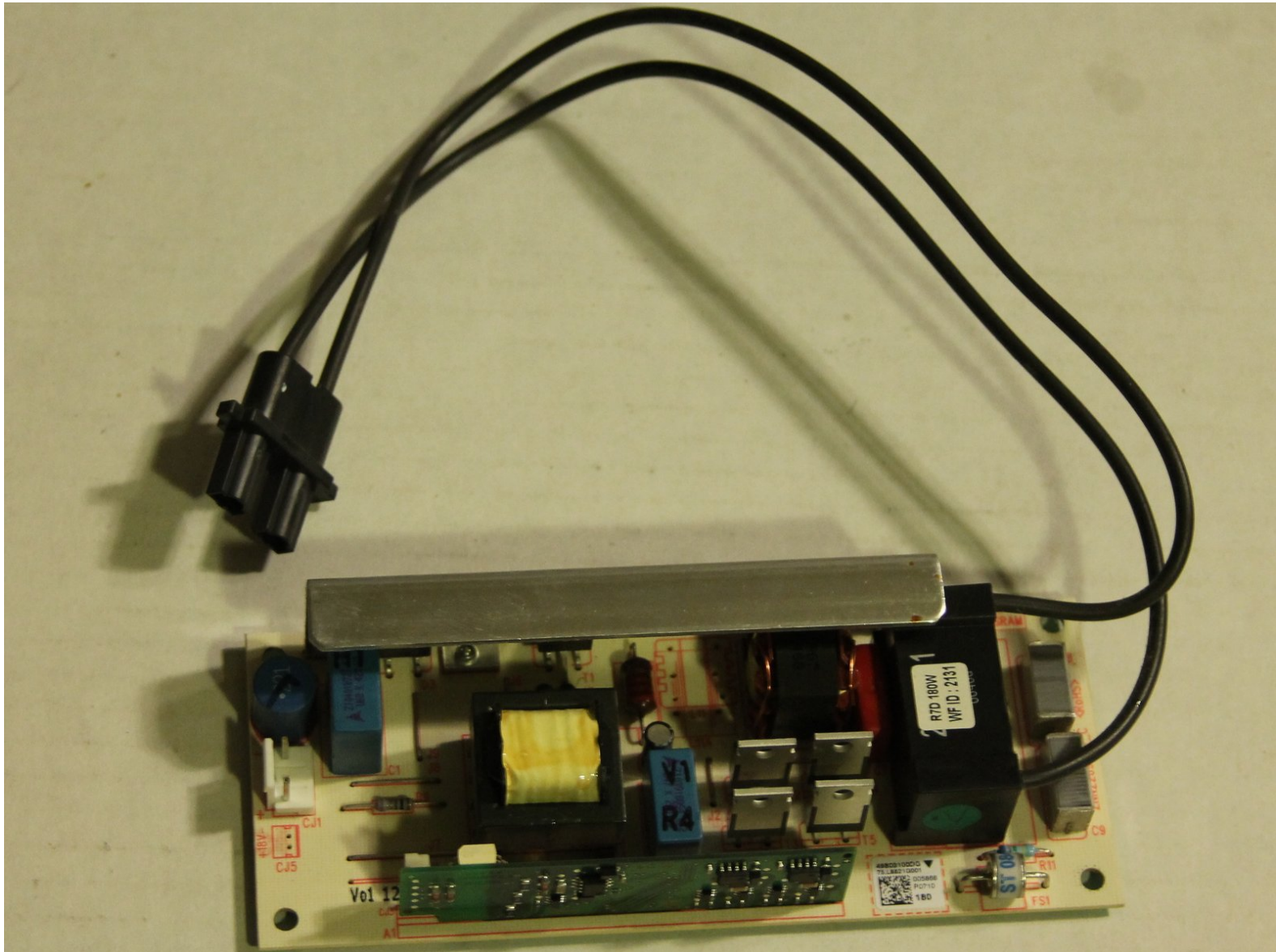




Mitsubishi WD57734 Lamp Ballast Replacement

Install a new lamp ballast in your Mitsubishi WD-57734 DLP HDTV.

Written By: Herman Chai



INTRODUCTION

Use this guide to install a new lamp ballast.

TOOLS:

- [Anti-Static Wrist Strap](#) (1)
 - [Latex or nitrile gloves](#) (1)
 - [Phillips #0 Screwdriver](#) (1)
 - [Phillips #1 Screwdriver](#) (1)
 - [Phillips #2 Screwdriver](#) (1)
-

Step 1 — Lamp



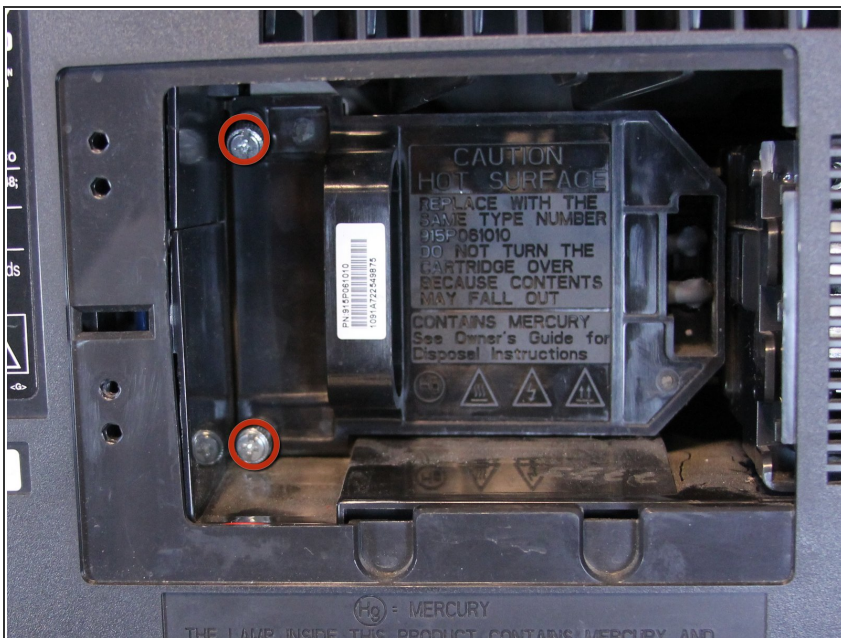
- ⓘ Before disassembling your television, be sure it is powered off and unplugged.
- Remove the single 18 mm Phillips #1 screw on the lamp access panel.

Step 2



- Pull the lamp access panel off of the back panel of the television by pulling straight back on the left side of the panel near the screw then pulling to the left.

Step 3



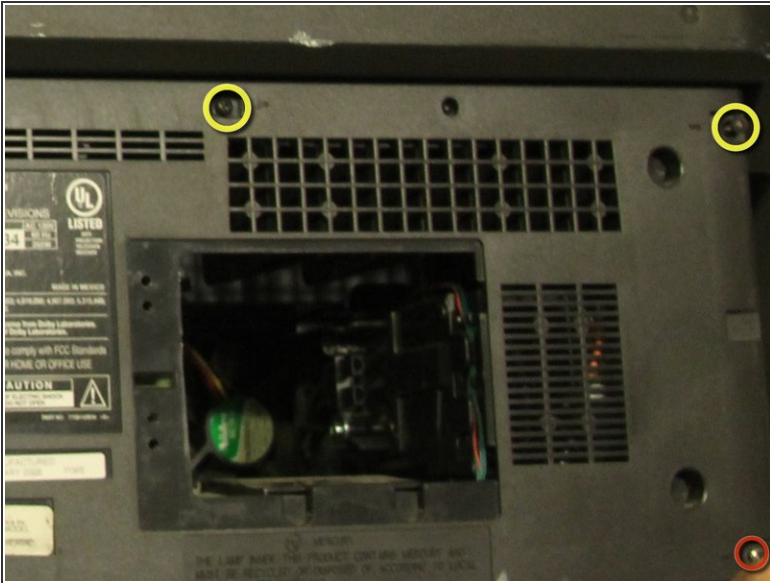
- Loosen the two Phillips #2 screws securing the lamp housing to the television until the screws will swivel vertically.
- ⓘ These two screws are permanently attached to the lamp housing and cannot be removed completely.

Step 4



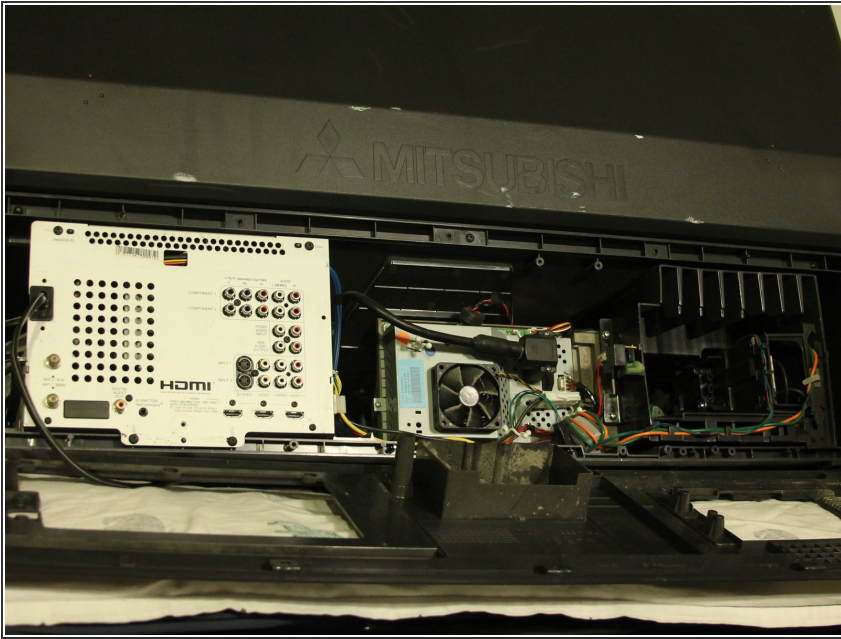
- Using the handle, pull the lamp housing straight back out of the television.
- ⚠ Do not touch the glass of the lamp with your bare hands. The oil from your fingers can distort the TV image and lead to other issues.

Step 5 — Back Panel



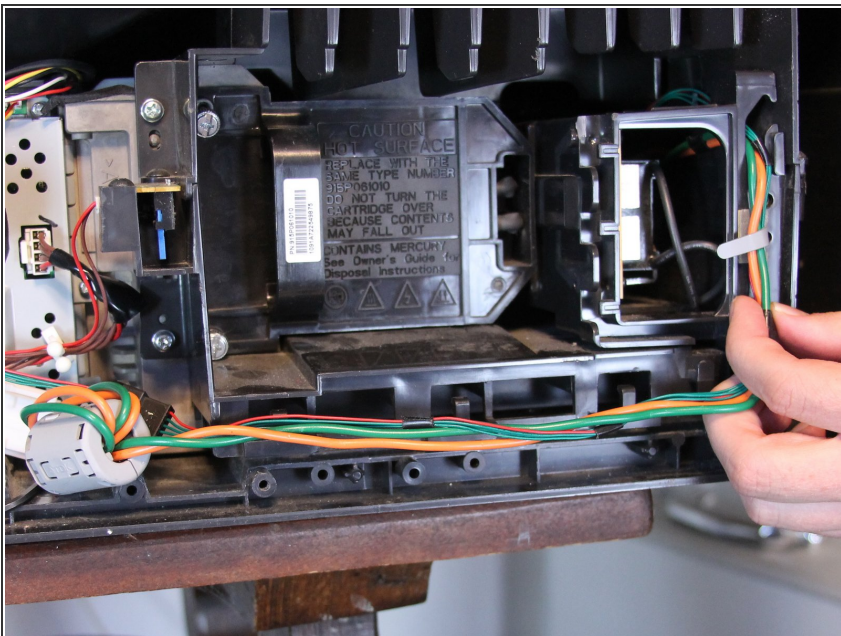
- Remove the following 8 Phillips #1 screws:
 - One 22 mm Phillips #1 in the bottom right corner of the back panel.
 - One 18 mm Phillips #1 in the top middle of the back panel.
 - Six 18 mm Phillips #1 in the rest of the back panel.

Step 6



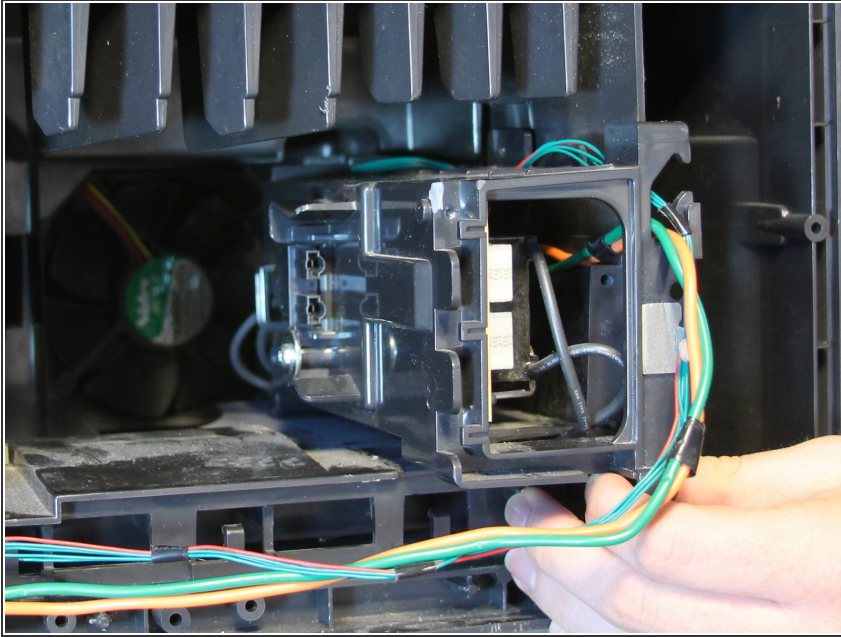
- Pull the back panel off of the television by gripping the sides and rotating it down.

Step 7 — Lamp Ballast



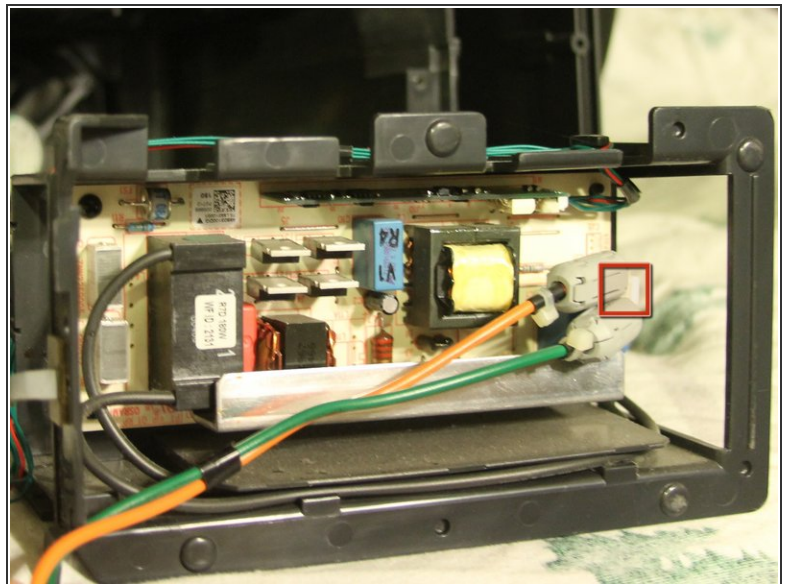
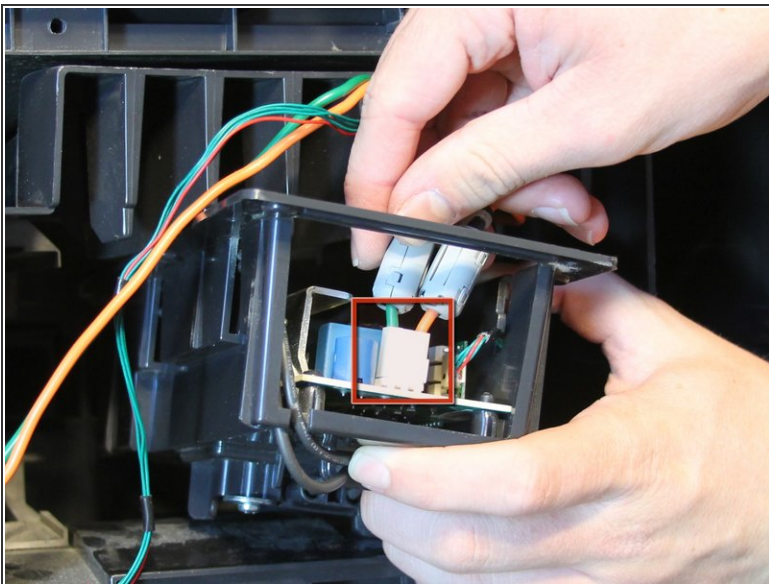
- Pull up and unsecure the orange and green power connection wires that are being held down by the white clamps and black cable hooks.

Step 8



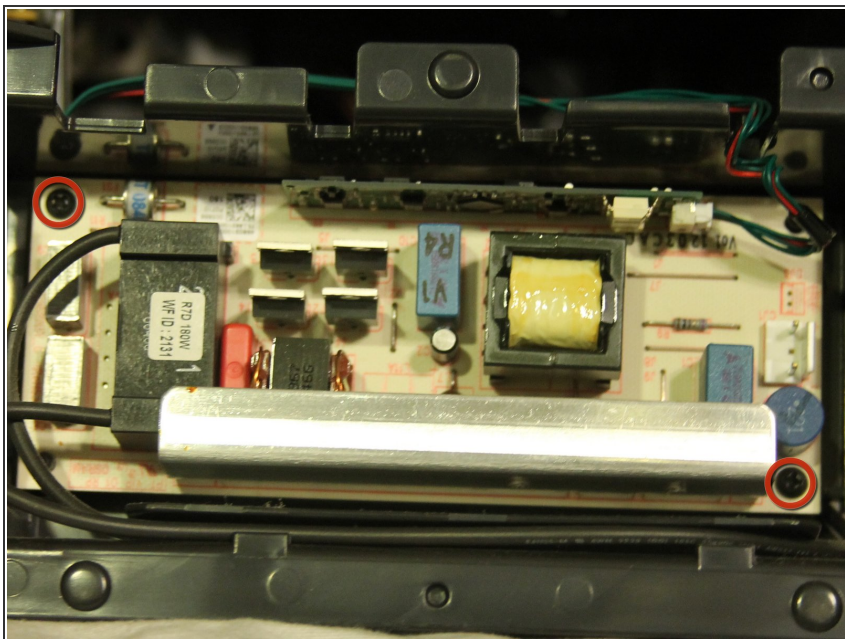
- Pull straight back on the lamp ballast housing to remove it from the television.

Step 9



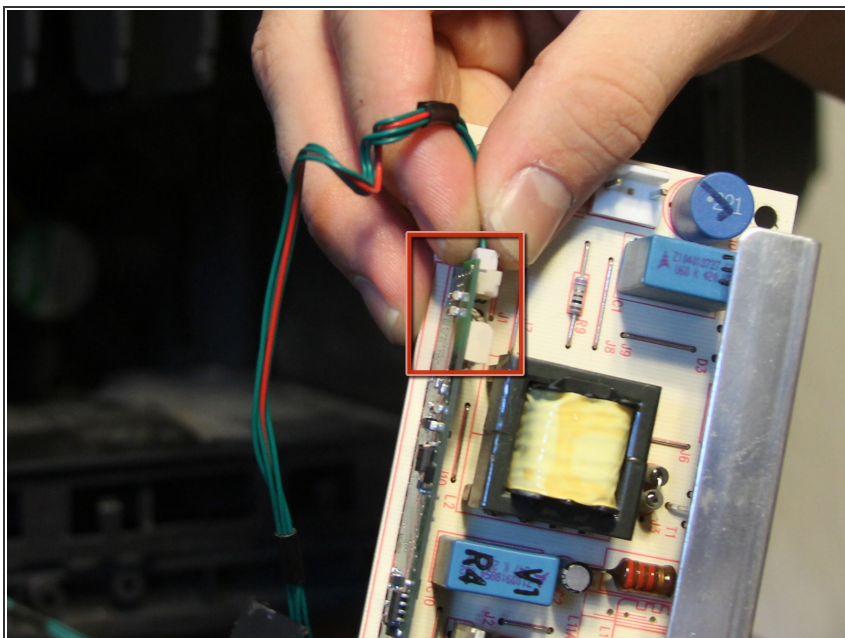
- Disconnect the orange and green power connection from the lamp ballast by holding the white tab on the connector and pulling straight out.

Step 10



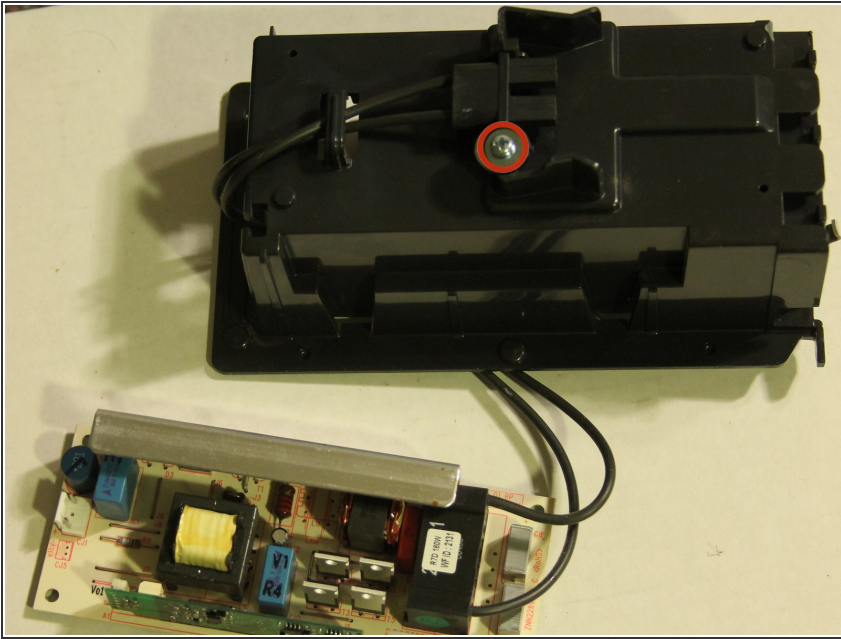
- Remove two 14 mm Phillips #0 screws securing the lamp ballast to it's housing.

Step 11



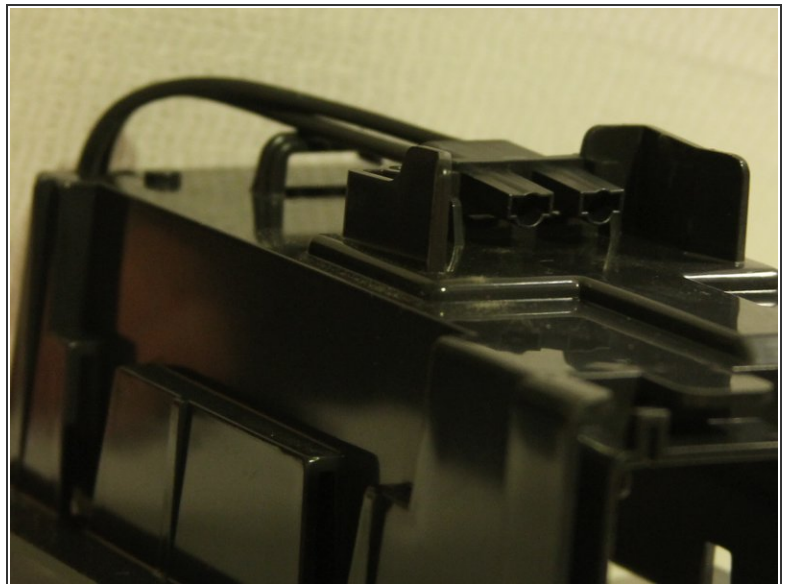
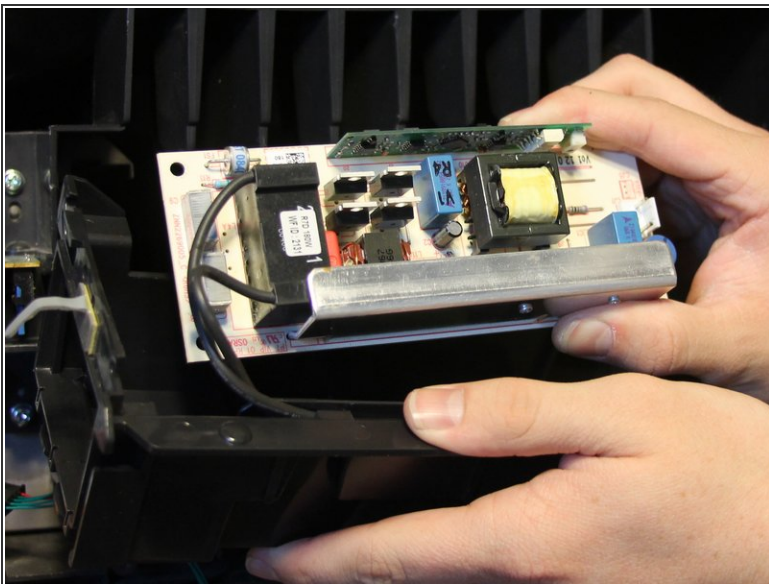
- Disconnect the green and red main board connection from the lamp ballast by gently pulling straight back out of the socket.

Step 12



- Remove one 10 mm Phillips #1 screw from the back of the lamp ballast housing.

Step 13



- Pull the lamp ballast out of its housing.
- ⓘ The lamp connection that is on the back of the lamp ballast housing should have its flat side facing away from the ballast housing when you are putting the t.v. back together.

To reassemble your device, follow these instructions in reverse order.