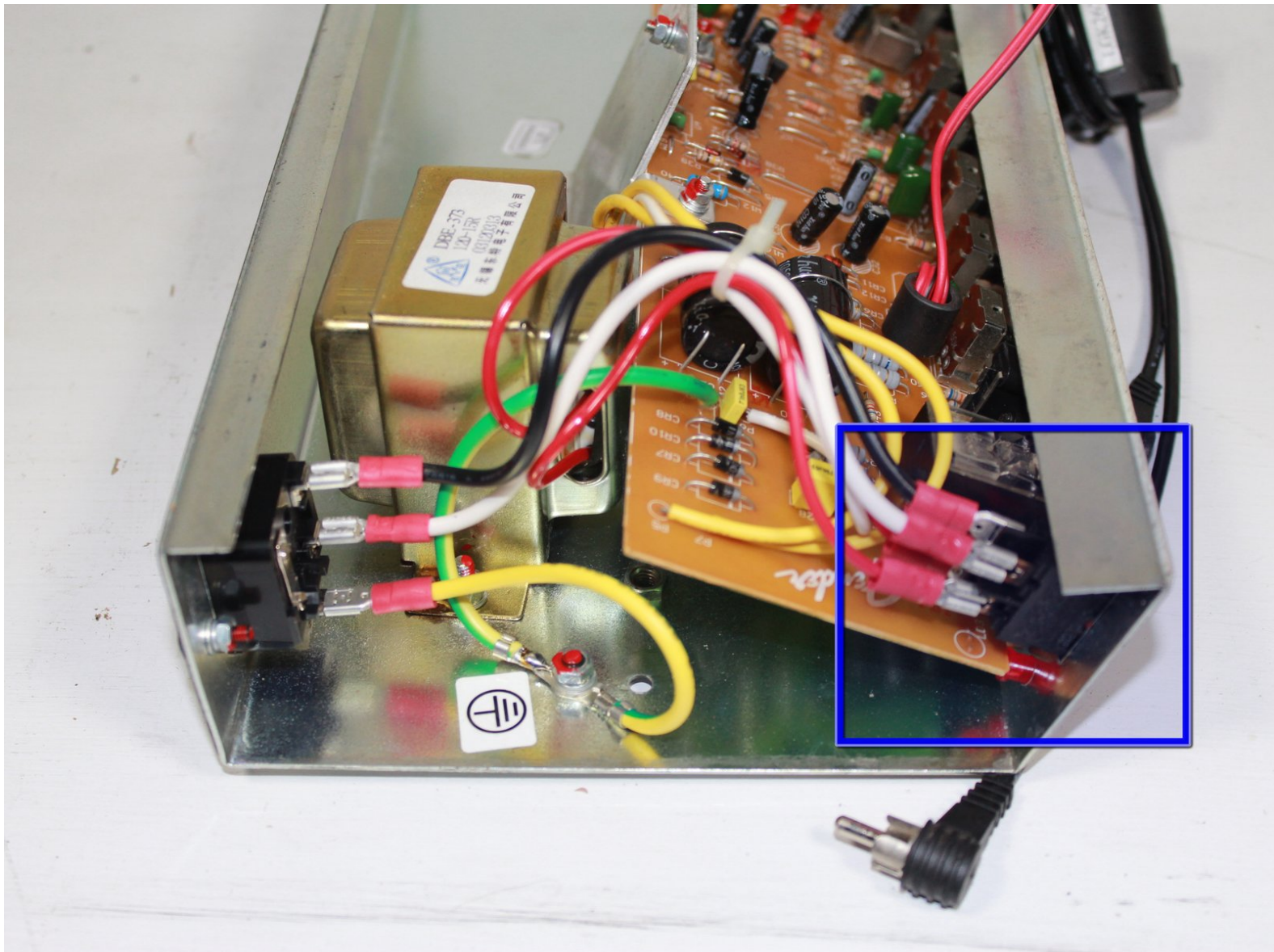




Fender Frontman 15r Power Switch Replacement

How to install the on/off switch of the amp.

Written By: Greg Sawers





TOOLS:

- [Phillips #0 Screwdriver](#) (1)
- [Phillips #1 Screwdriver](#) (1)
- [iFixit Opening Tools](#) (1)
- [Spudger](#) (1)

Step 1 — Back panel



- ⚠ Be sure to unplug the device before proceeding.
- Use a Phillips #0 screwdriver to remove the four 21.7mm screws holding the back panel to the frame.

Step 2



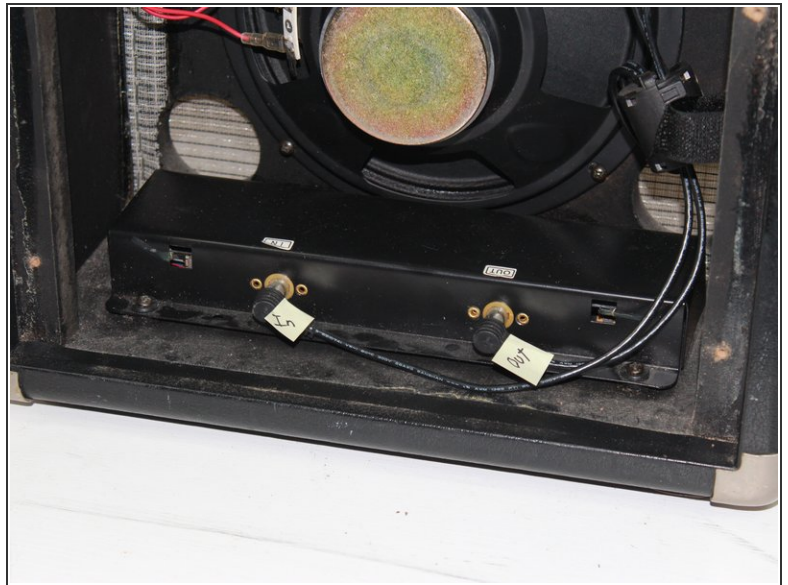
- Once the screws are out, use a plastic opening tool or spudger to pry the top of the back panel open. There may be some resistance, but it will eventually pry loose.

Step 3



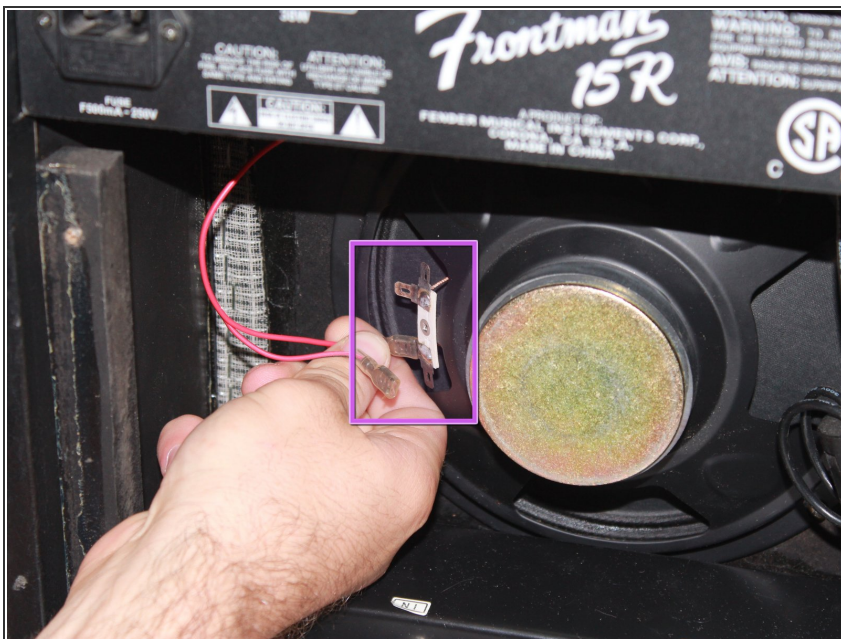
- Once the top is separated, use your hand to remove the back panel from the unit.

Step 4 — Mounting Bracket



- There will be two black wires connecting the top mounting bracket to the reverb box at the bottom of the unit. Label the wires to prevent crossing upon re-installation, then unplug the wires from the reverb box.

Step 5



- Label and unplug the two red wires connecting the mounting bracket to the speaker by pulling them off the nodes.

Step 6



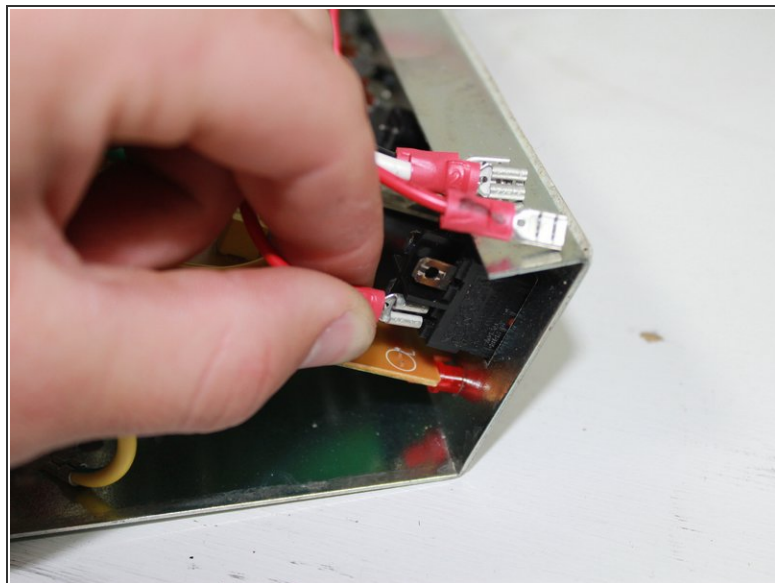
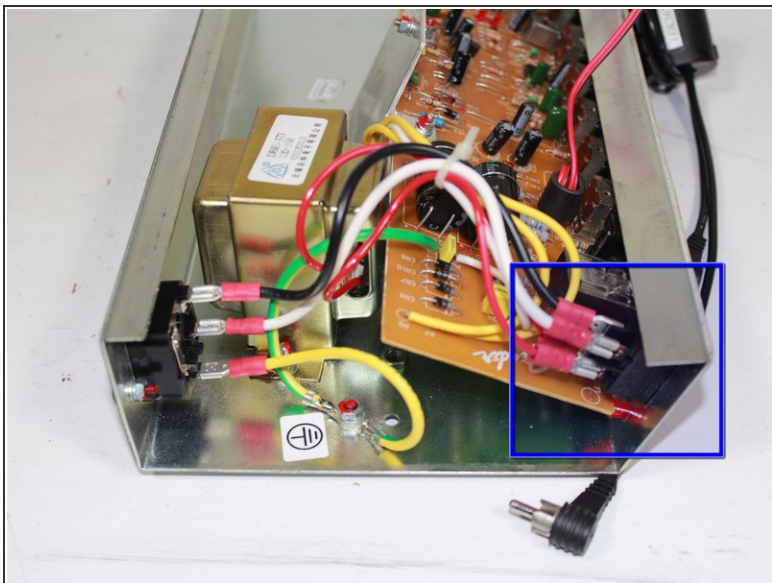
- Use a Phillips #1 screwdriver to unscrew the four 36.4 mm screws holding the mounting bracket to the top of the amp.

Step 7



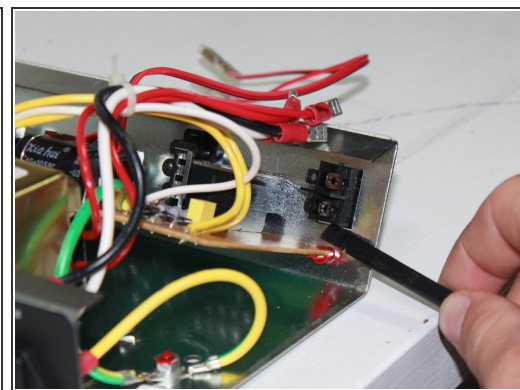
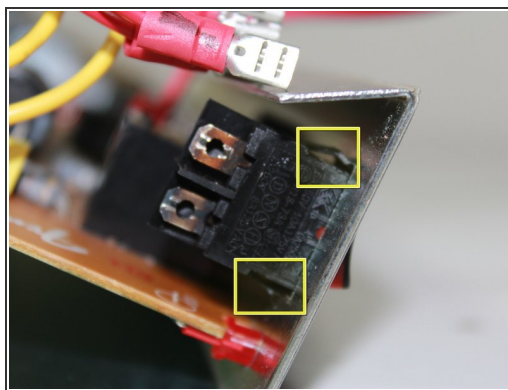
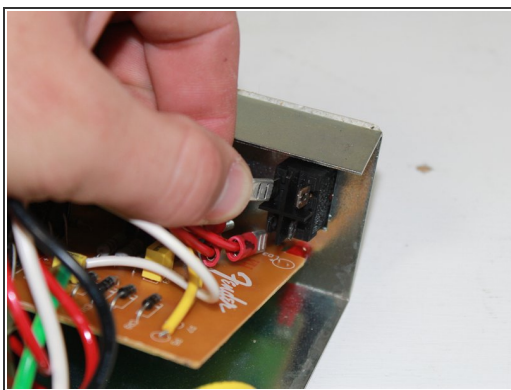
- Pull the mounting bracket free from the frame. It may be wedged in very snug, in which case, use a plastic opening tool/spudger to pry it loose from the front.

Step 8 — Power Switch



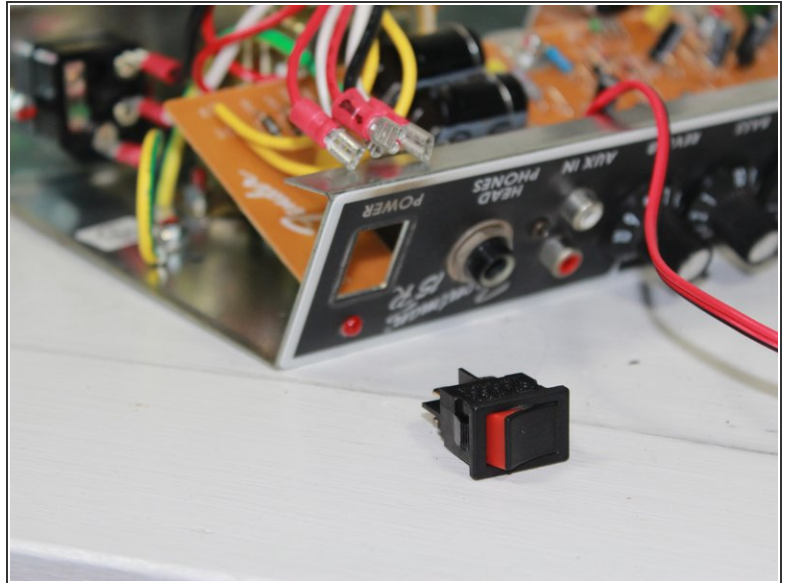
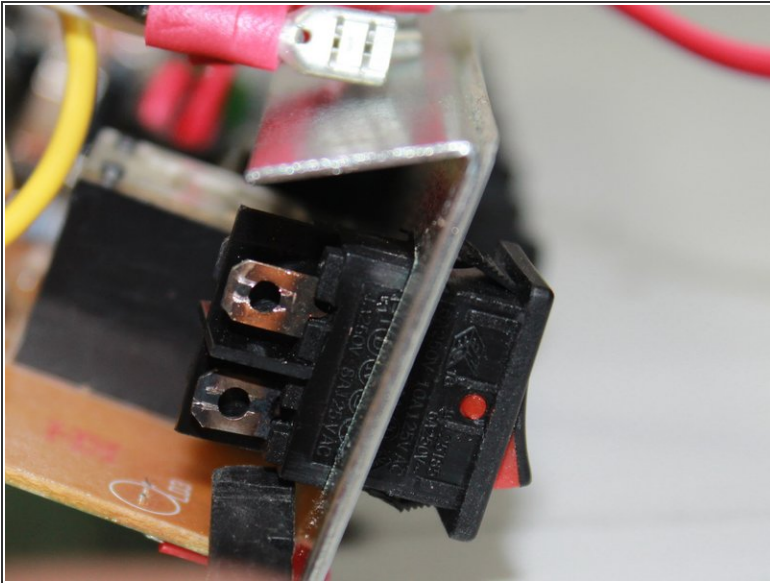
- Mark, make note of, or remember the arrangement of the wires.
- Remove the four female disconnected terminals from the switch terminals.

Step 9



- Using the flat end of a spudger, push in one of the wedged locking clips.
- Partially tilt the switch box so that clip is held down.
- Repeat for the other side of the switch

Step 10



- Be sure that both locking clips are pressed through the opening. This may take a few tries.
- Gently remove the switch.

Once the old power switch is removed, install the new one by following the guide in reverse.