



Dell Inspiron 1521 Bottom Panel Replacement

The screws in the bottom panel need to be removed in order to remove the panel underneath the keyboard which allows you to access the CPU.

Written By: Erik Sanchez



INTRODUCTION

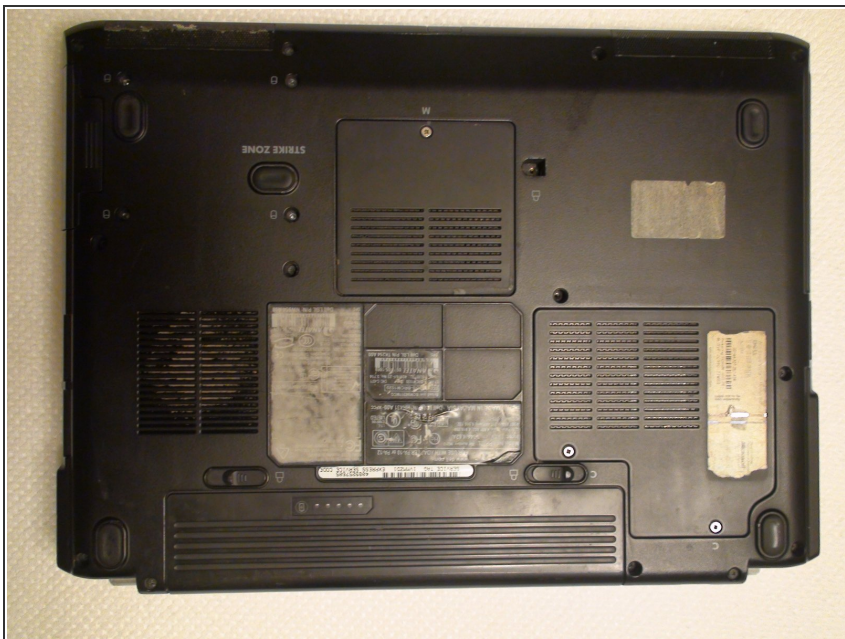
This guide will show you how to prepare the computer for the removal of the panel underneath the keyboard.



TOOLS:

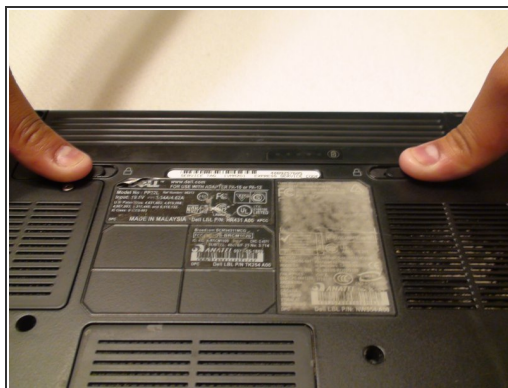
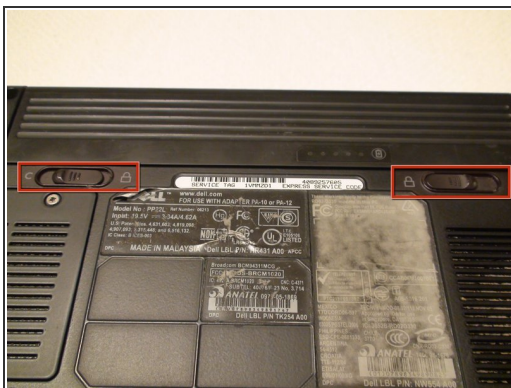
- [Phillips #1 Screwdriver](#) (1)
-

Step 1 — Battery



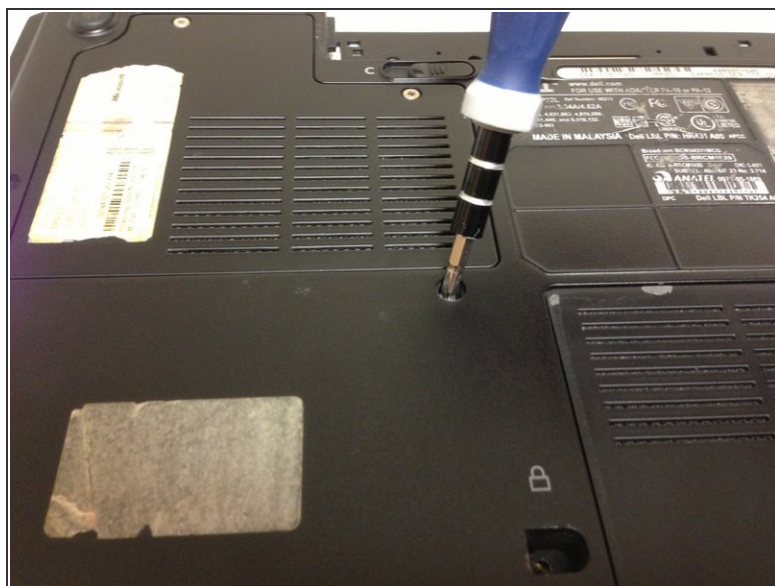
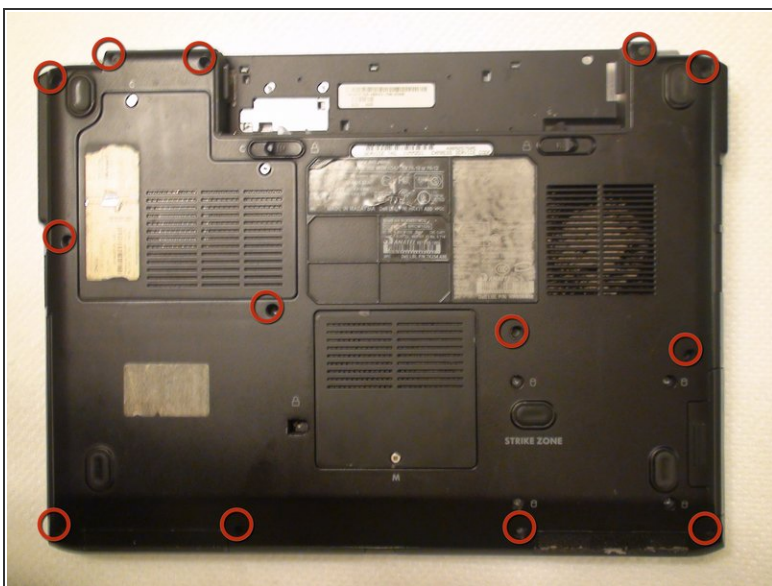
- Rotate the laptop so its bottom is facing up.

Step 2



- Identify the lock mechanisms holding the battery in place.
- Slide each button outward with your fingers to disengage the battery.
- Pull the battery off with your hand to separate it from the laptop.

Step 3 — Bottom Panel



- Locate the thirteen 10 mm Phillips #1 screws securing the bottom panel of the laptop.
- Remove the thirteen indicated screws with a Phillips #1 screwdriver.
- ⓘ With the screws removed you can now remove the panel underneath keyboard.

To reassemble your device, follow these instructions in reverse order.