



Samsung Galaxy Note 4 Display Replacement

Replace the display on a Samsung Galaxy Note 4.

Written By: Adam O'Camb



INTRODUCTION

Use this guide to replace the display and touch panel on your Galaxy Note 4.

If the frame is damaged or bent, it's important to replace it, or else the new screen may not mount correctly and can suffer damage from uneven pressure.

The process of separating the display from the frame usually destroys the display, so don't follow this guide unless you intend to replace the display.



TOOLS:

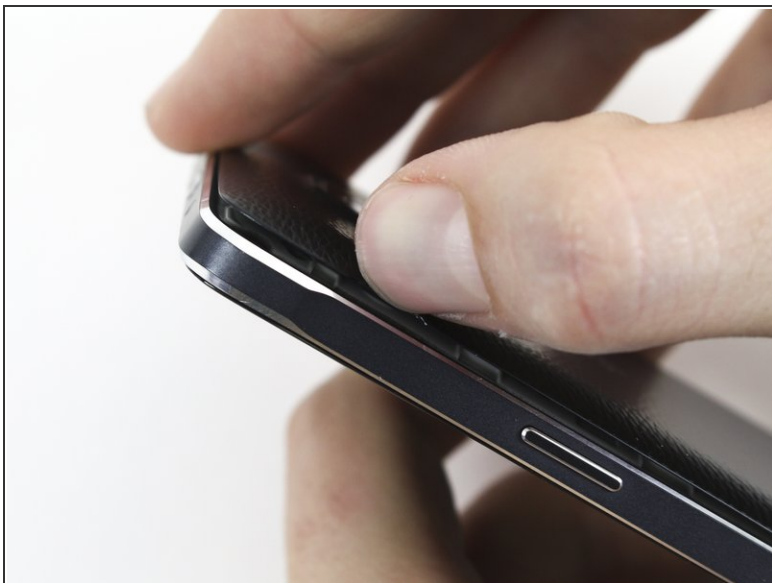
- [iFixit Opening Picks \(Set of 6\)](#) (1)
- [Spudger](#) (1)
- [iOpener](#) (1)
- [Tweezers](#) (1)
- [Suction Handle](#) (1)



PARTS:

- [Galaxy Note 4 Screen](#) (1)

Step 1 — Rear Case



- Insert a fingernail or plastic opening tool into the divot to the left of the rear-facing camera.
- Gently pry and twist the flexible rear cover off the back of the phone.

Step 2 — Battery



- Insert a fingernail or plastic opening tool into the recess in the bottom right corner of the battery and lift upward.
- Remove the battery.

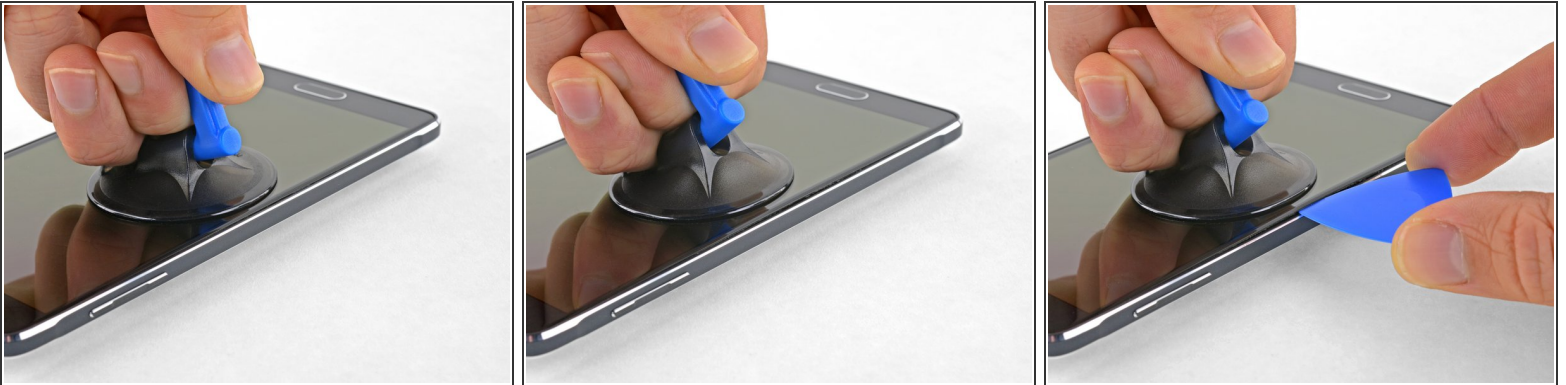
Step 3 — Display



- [Prepare an iOpener](#) and heat the display along the left edge for about two minutes.
- ⓘ You may need to reheat and reapply the iOpener several times to get the phone warm enough. Follow the iOpener instructions to avoid overheating.

⚠ A hair dryer, heat gun, or hot plate may also be used, but be careful not to overheat the phone—the display and internal battery are both susceptible to heat damage.

Step 4



- Once the screen is warm to the touch, apply a suction cup as close to the heated edge of the phone as you can.
- If your display is badly cracked, the suction cup may not stick. Try [lifting the display with strong tape](#), or superglue the suction cup in place and allow it to cure so you can proceed.
- Lift on the suction cup, and insert an opening pick under the display assembly.

Step 5



- Slide the opening pick along the left edge of the display to separate the adhesive underneath.
 - ❗ The display and digitizer cables are located near the top of the display and may interfere with your pick if you pry too deeply.
- If cutting becomes difficult, reheat and reapply the iOpener.
- Leave the pick in place to prevent the adhesive from re-adhering and grab a second pick as you proceed to the next step.

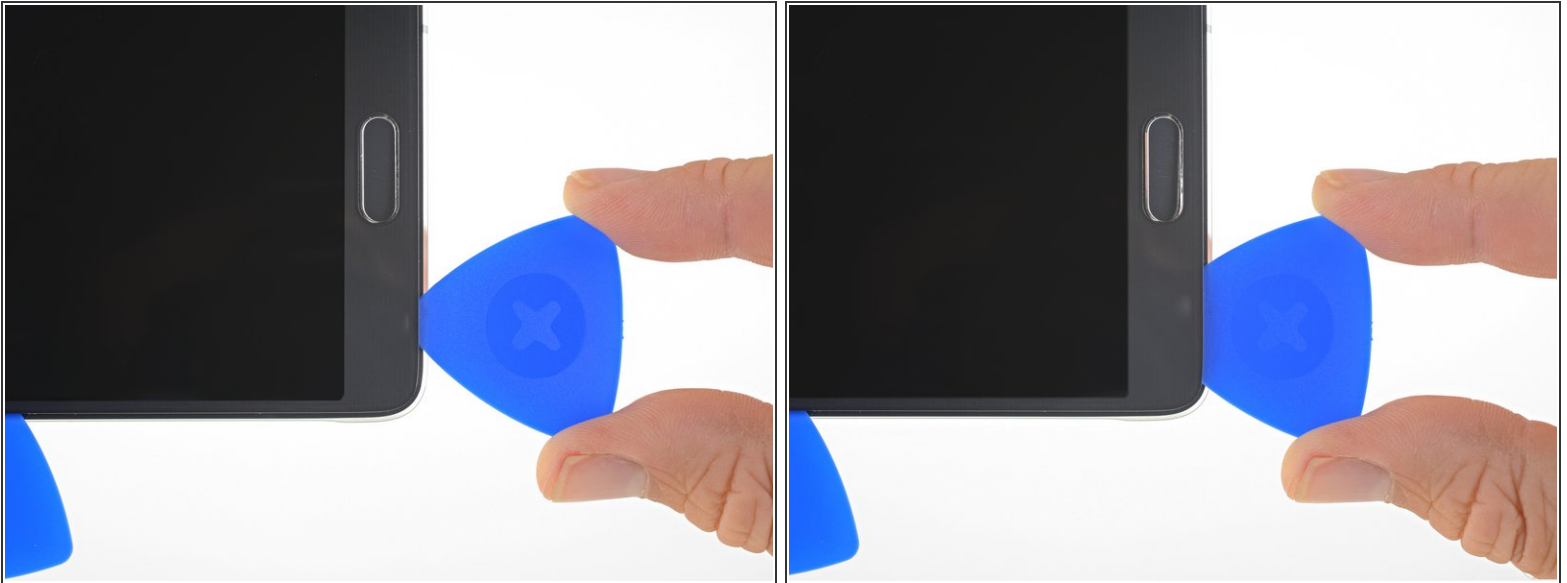
Step 6



- Apply a heated iOpener to the bottom of the phone.
- Slide an opening pick along the bottom of the phone.

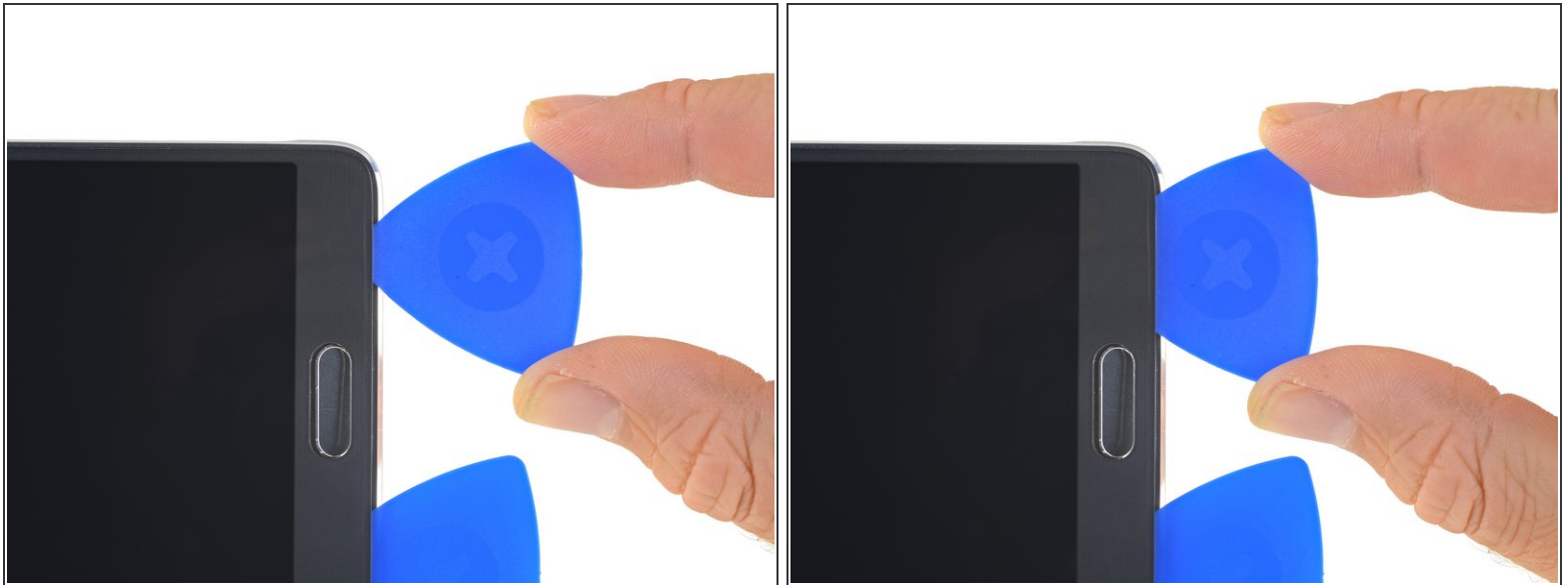
⚠ Only insert the pick about 0.25 inches (6 mm) to avoid damage to the home button or either of the delicate [capacitive buttons](#) at the bottom of the phone.

Step 7



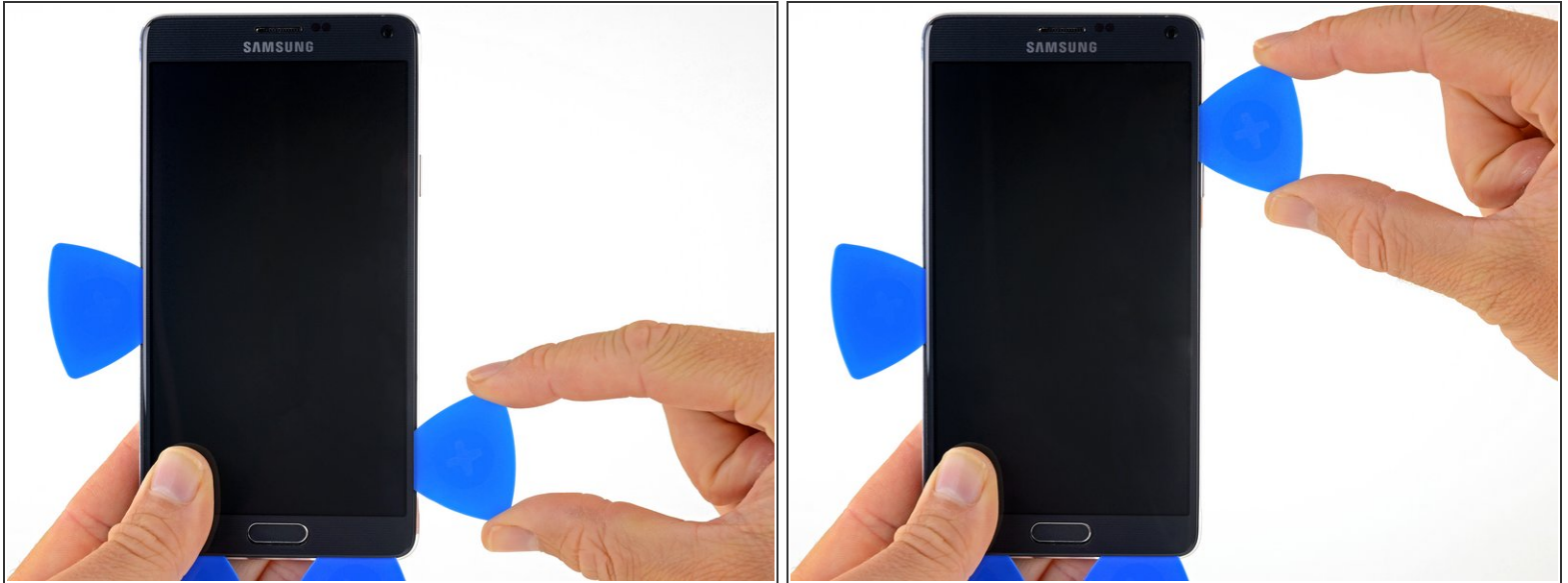
- Insert an opening pick 0.5 inches (12.5mm) into the left side of the bottom edge of the phone.
⚠ Push the pick in slowly and gently to avoid tearing the delicate capacitive button ribbon cable underneath the display. Reapply an iOpener if it's difficult to insert the pick.
- Once the pick has cut through the adhesive, leave it in place to prevent the adhesive from resealing.

Step 8



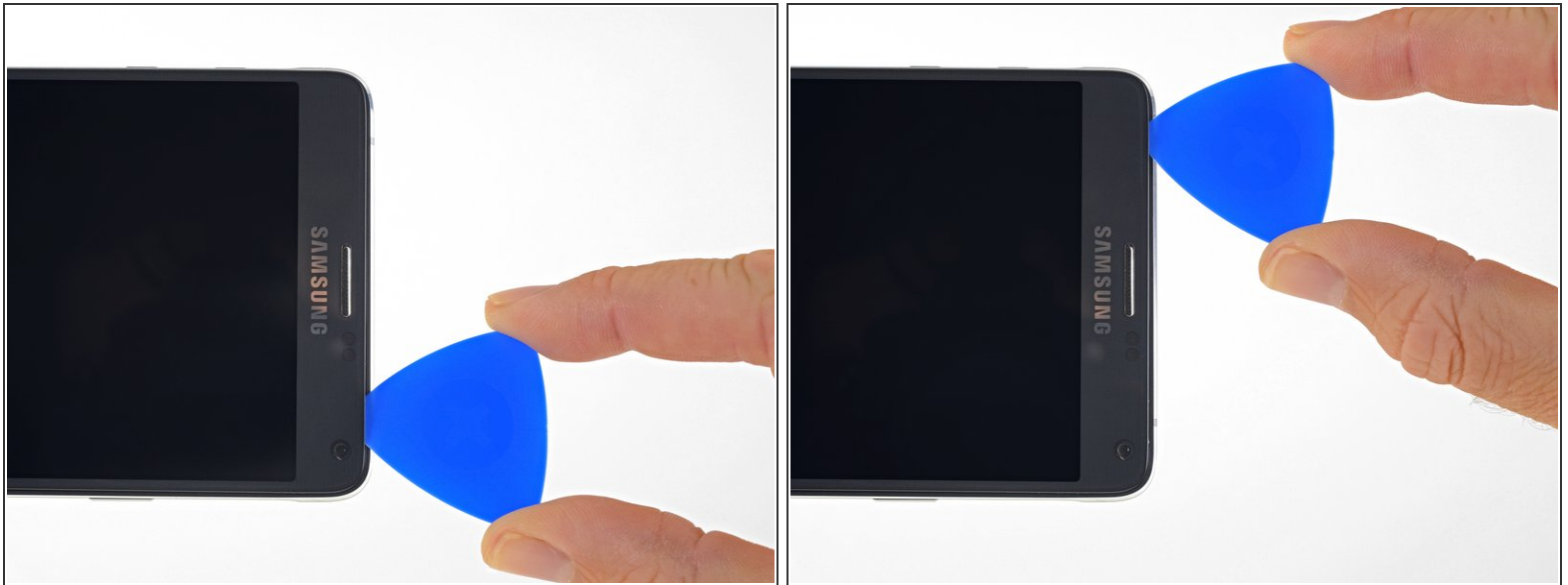
- Insert an opening pick 0.5 inches (12.5mm) into the right side of the bottom edge of the phone.
⚠ Push the pick in slowly and gently to avoid tearing the delicate capacitive button ribbon cable underneath the display. Reapply an iOpener if it's difficult to insert the pick.
- Once the pick has cut through the adhesive, leave it in place to prevent the adhesive from resealing.

Step 9



- Apply a heated iOpener to the right edge of the phone.
- Slide the opening pick along the right edge of the display to separate the adhesive underneath.
 - ⚠ **Don't insert the pick more than 1 inch (25 mm) underneath the display to avoid damaging the [home button cable](#).**
 - ⓘ The display and digitizer cables are located near the top of the display and may interfere with your pick if you pry too deeply.
- Leave the pick in place to prevent the adhesive from re-adhering and grab a second pick as you proceed to the next step.

Step 10



- Gently slide an opening pick under the top edge of the display to separate the adhesive underneath.

ⓘ Only insert the pick about 0.25 inches (6 mm) under the display.

⚠ Don't pry too aggressively or you may damage the front-facing sensors and speaker assembly. You can come back to finish separating this section after the rest of the display is loose.

Step 11



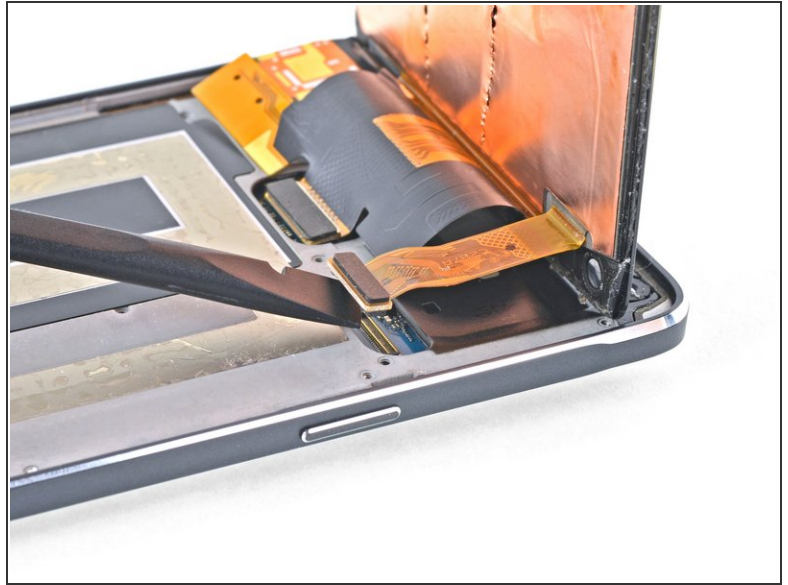
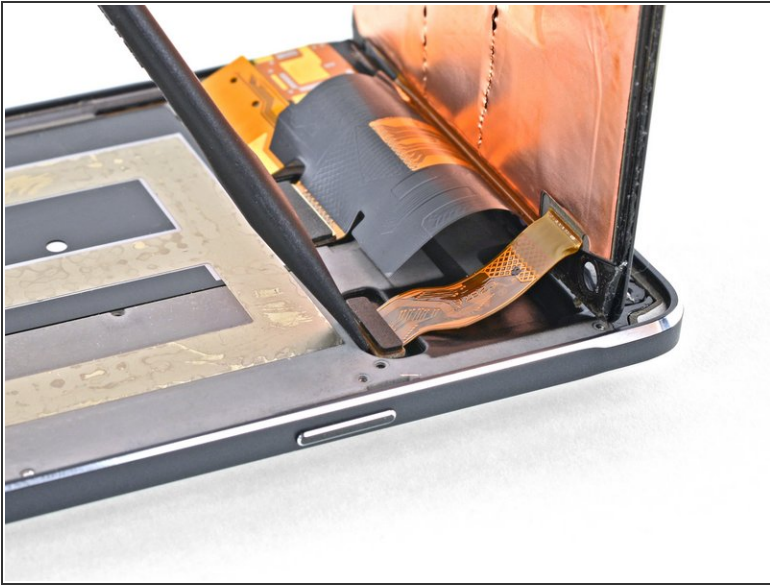
- Use your picks as needed to finish separating the adhesive beneath all areas of the display.
- Pry the bottom part of the display away from the phone until they are fully separated.

Step 12



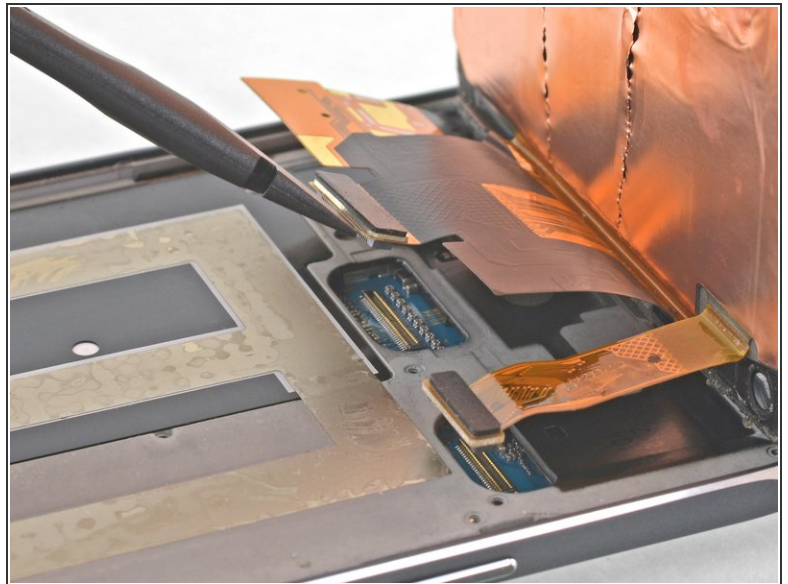
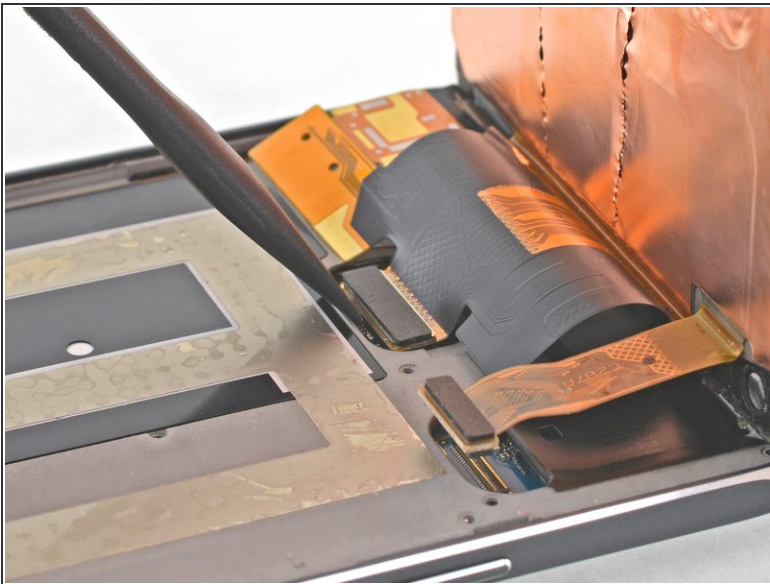
- Gently lift the display so you can easily access the display and digitizer connectors.
- ❗ You may want to support the display with something, such as the box the phone came in, while you disconnect the display and digitizer cables.

Step 13



- Use the flat end of a spudger to pry the display cable connector straight up and out of its socket.

Step 14



- Use the flat end of a spudger to pry the digitizer cable connector straight up and out of its socket.

Step 15



- Remove the display.

⚠ Before installing a new display, it's very important to remove all traces of the old adhesive from the frame, while taking special care to remove any small glass fragments.

- After removing all traces of glue and glass from the frame, clean the adhesion areas with 90% (or higher) isopropyl alcohol and a lint-free cloth or coffee filter. Swipe in one direction only, not back and forth.

⚠ If the frame is bent, or if any glue or glass remnants are left behind, the new display will not mount correctly and may be damaged.

- ✦ The best way to secure the new screen is with a sheet of custom-cut double-sided tape. Apply the tape to the back of the screen, then carefully feed the display cable through the frame. Align the screen and press it into place.

To reassemble your device, follow these instructions in reverse order.