



Garmin GPSmap 60CSx Battery Terminal Replacement

How to change a broken battery terminal on a Garmin GPSmap 60CSx.

Written By: Thomas Humphrey



INTRODUCTION

If you know your batteries are not the problem, but your device will not power on, your battery terminals may be corroded. The following is a guide on how to replace battery terminals on the Garmin GPSmap 60CSx.



TOOLS:

- [Spudger](#) (1)

Any small stick spudger can work. The one used in this guide is from the iFixit Pro Tech Tool Kit

- [Metal Spudger](#) (1)

Any metal spudger will work. The one used in this guide is from the iFixit Pro Tech Tool Kit

- [Phillips #0 Screwdriver](#) (1)
-

Step 1 — Back Cover and AA Batteries



- Lift and twist the battery cover release 90 degrees counterclockwise on the back of the device.

Step 2



- Lift battery release up to remove battery cover.

Step 3



- Pull AA batteries out.

Step 4 — Battery Terminals



- Remove the six 10 mm screws on the back of the device with a Phillips #0 Screwdriver.

Step 5



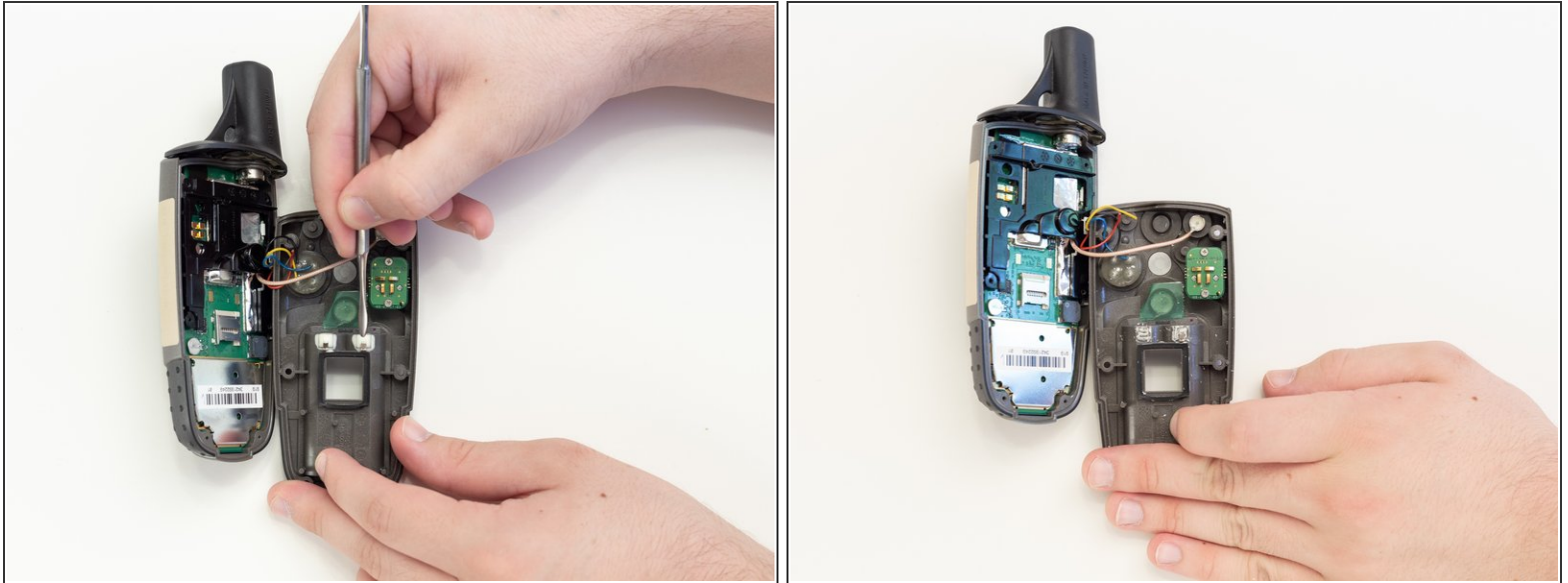
- Place spudger behind the lower right battery terminal.
- Push spudger behind the battery terminal to pop it out of place.
- Now do the same on the bottom left side.

Step 6



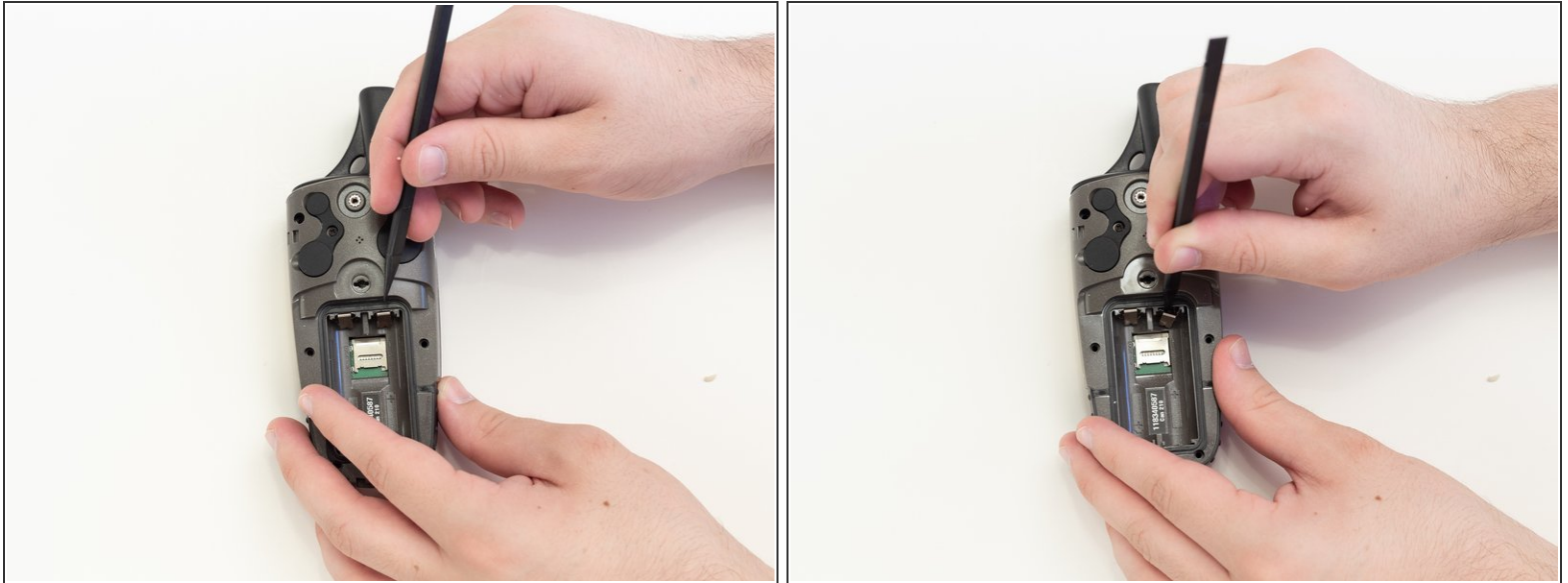
- Grab the now loose battery terminals and pull them from the GPSMap 60CSx.

Step 7



- Flip the back panel over to expose the backs of the top battery terminals.
- Use a metal spudger to remove the glue that covers them.

Step 8



- Flip the back panel back over to view the battery compartment.
- Place the spudger behind one of the top remaining battery terminals.
- Push the spudger down and pop the battery terminal out of place.
- Repeat with the remaining battery terminal.

To reassemble your device, follow these instructions in reverse order.