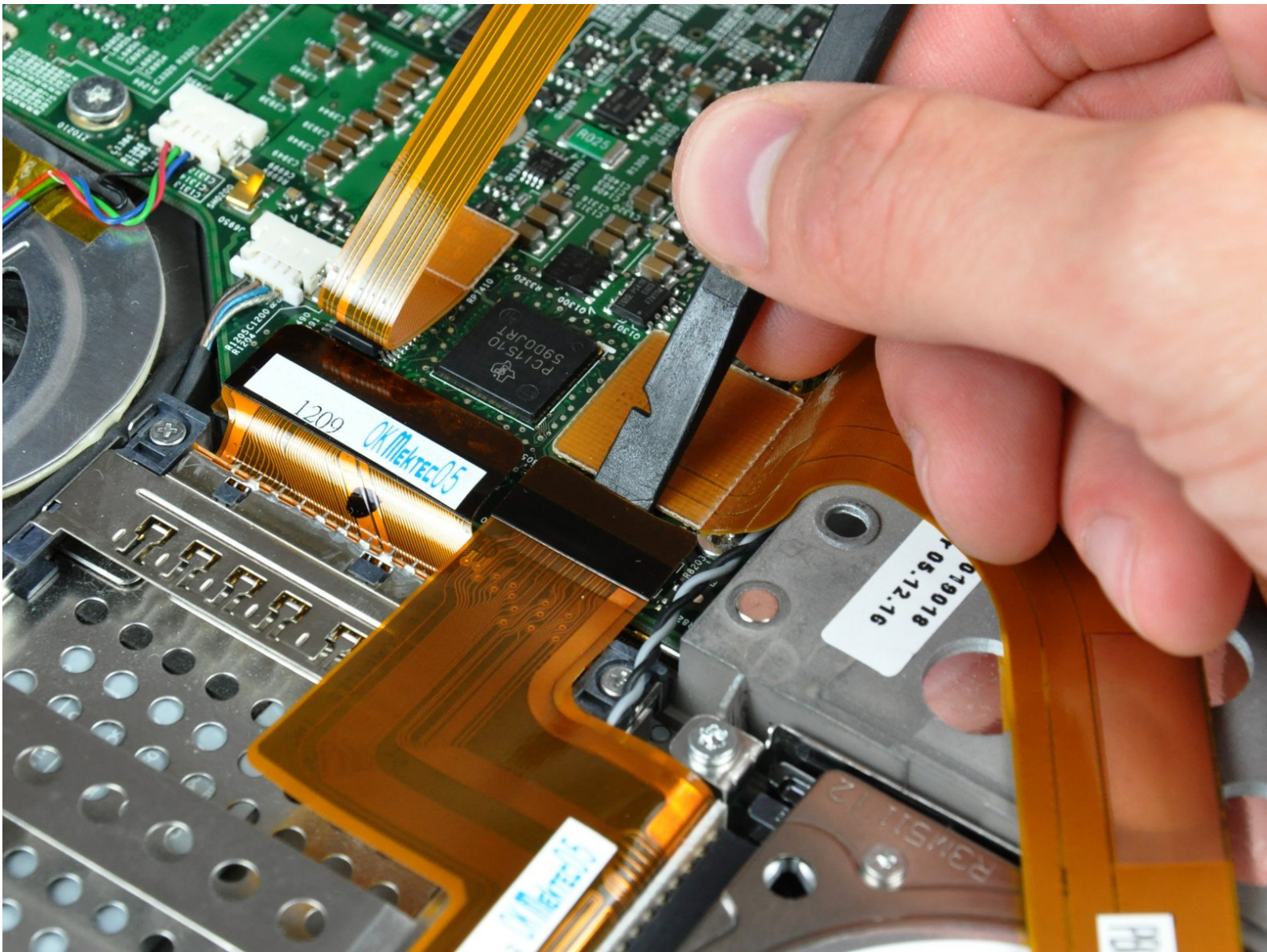




# PowerBook G4 Aluminum 17" 1.67 GHz (High-Res) PC Card Cage Replacement

Written By: Walter Galan



# INTRODUCTION

Replace a faulty PC card cage to regain functionality of your internal expansion slot.



## TOOLS:

- [4mm Nut Driver](#) (1)
- [Phillips #00 Screwdriver](#) (1)
- [Spudger](#) (1)
- [T8 Torx Screwdriver](#) (1)

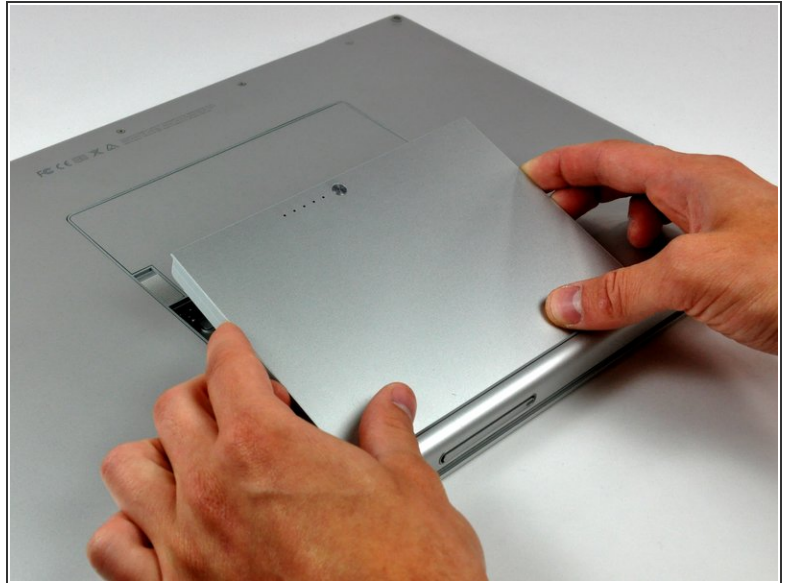


## PARTS:

- [G4 Aluminum 17" 1.67 GHz \(HR\) PC Card Cage](#) (1)



## Step 1 — Battery



- Use your thumbs to push the two battery retaining tabs away from the battery.
- The battery should pop up enough to rotate it toward yourself and lift it out of the lower case.

## Step 2 — Memory Door



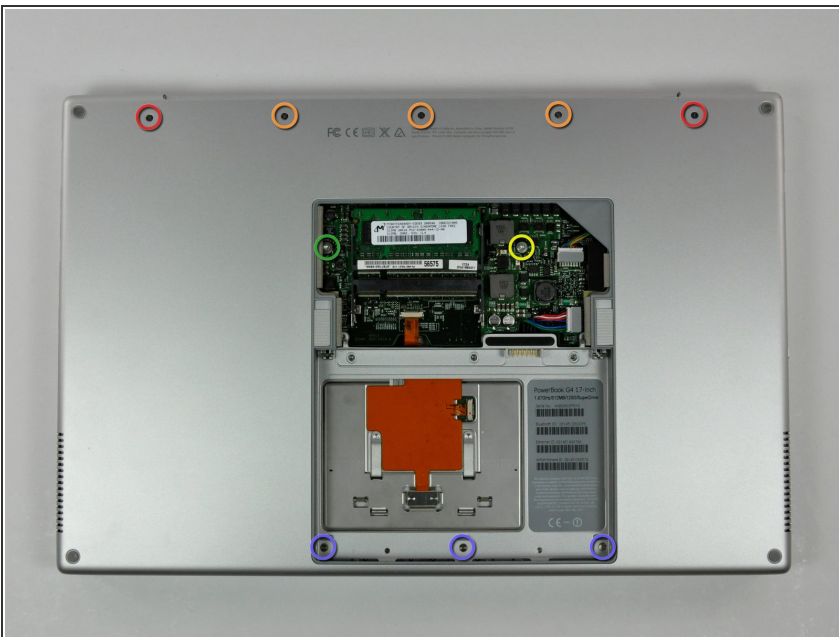
- Remove the three 2.3 mm Phillips screws securing the memory cover to the lower case.

## Step 3



- Lift the memory cover slightly and pull it toward yourself to remove it from the lower case.

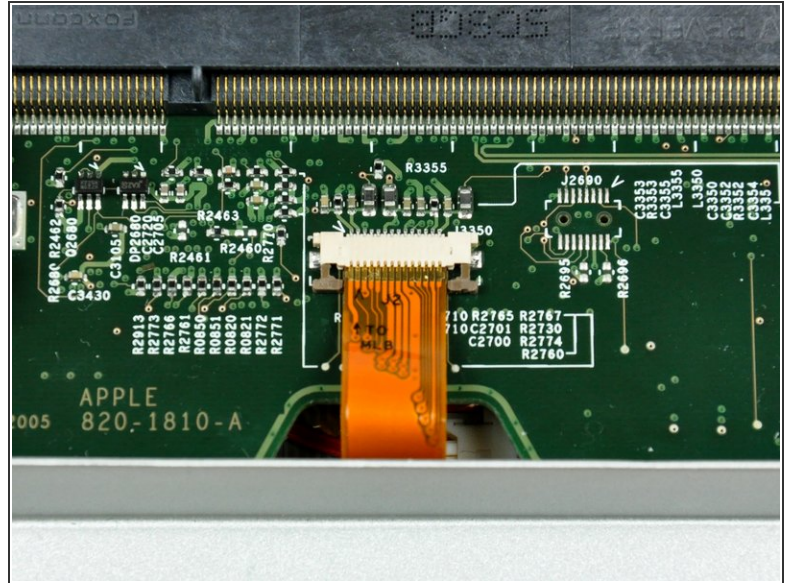
## Step 4 — Upper Case



- Remove the following ten screws:
  - Two 14.7 mm shouldered Phillips.
  - Three 12.3 mm Phillips.
  - One 3.8 mm T8 Torx.
  - One 6.8 mm T8 Torx.
  - Three 1.3 mm Phillips.

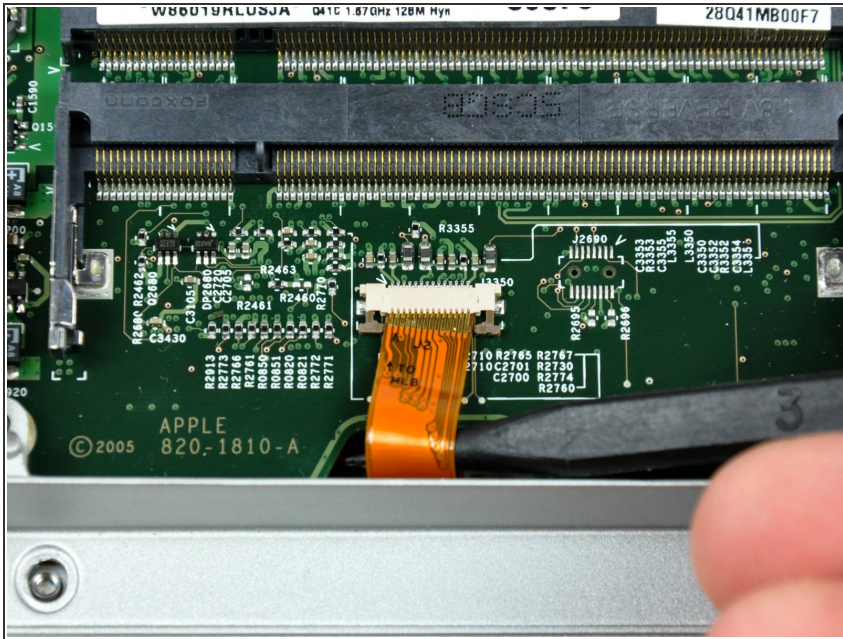


## Step 5



- The ZIF cable is located underneath the bottom RAM slot. If your PowerBook has both RAM slots occupied, make sure to [remove](#) the RAM chip.
- Use your fingernails to separate the ZIF cable lock away from its socket. (Move the two brown bits down 1mm)
- ⚠ The ZIF cable lock will move about a millimeter away from the socket before it stops (see picture 2). **Do not** try to remove the ZIF cable lock.

## Step 6



- Use the tip of a spudger to slide the trackpad ribbon cable out of its socket.

## Step 7



- Remove the four 3.4 mm Phillips screws from the PC card side of the PowerBook.
- ☑ When replacing these screws, you must reinstall each screw in the correct order. Begin by installing the screw closest to the display hinge, and go out from there.

## Step 8



- Remove the four 3.4 mm Phillips screws from the DVI connector side of the PowerBook.
- ★ When replacing these screws, you must reinstall each screw in the correct order. Begin by installing the screw closest to the display hinge, and go out from there.
- ⓘ During reassembly, make sure to reinstall the two screws on the right into their appropriate locations, and not the DVI port anchor holes.

## Step 9



- Depress the display latch release button and open your display.



## Step 10



- Starting near the display, lift the upper case straight up off the lower case, minding any cables that may get caught.

## Step 11 — Modem



- If necessary, peel back the strip of aluminum tape covering the modem cable.

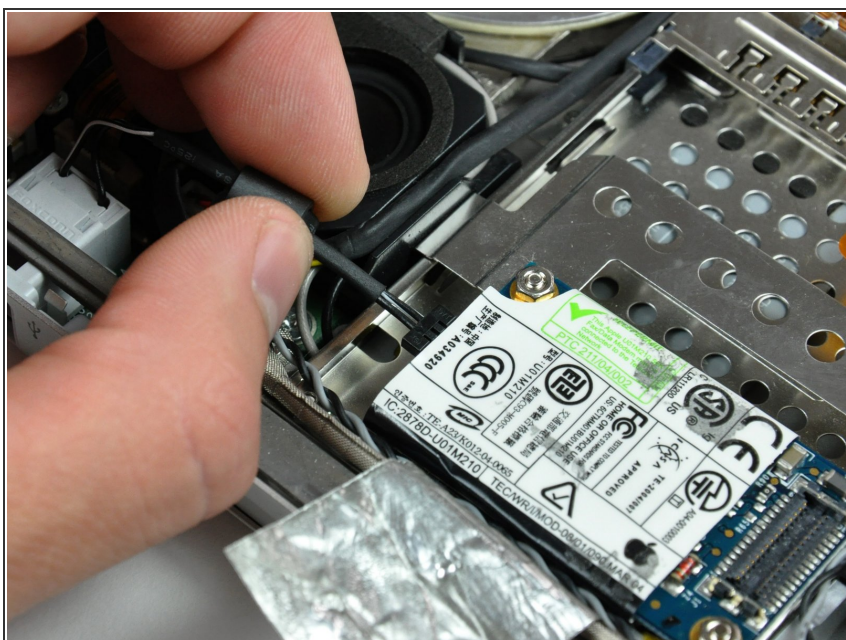


## Step 12



- Use the flat end of a spudger to pry the modem cable connector up off the modem.

## Step 13



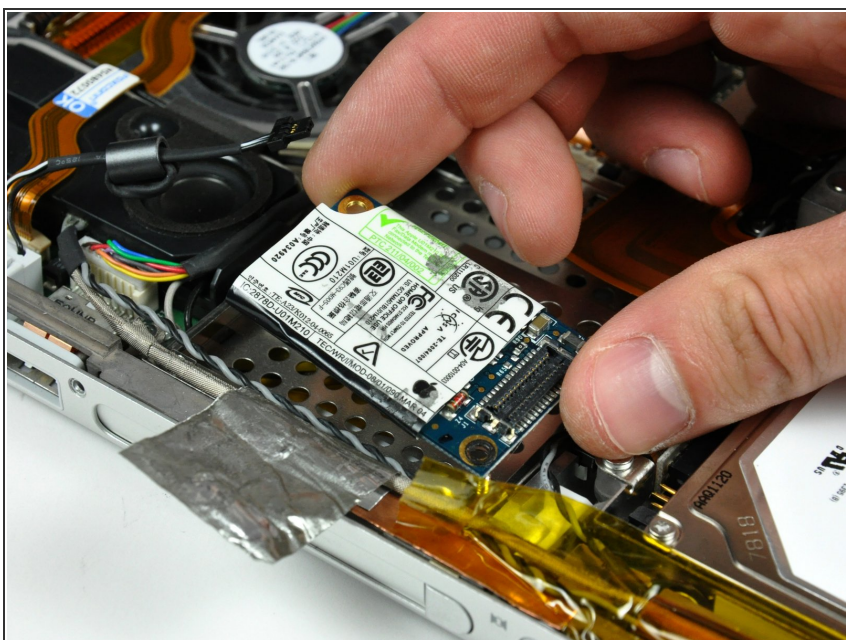
- Disconnect the RJ-11 cable from the modem.

## Step 14



- Use a 4 mm nut driver to remove the two nuts securing the modem to the PC card cage.

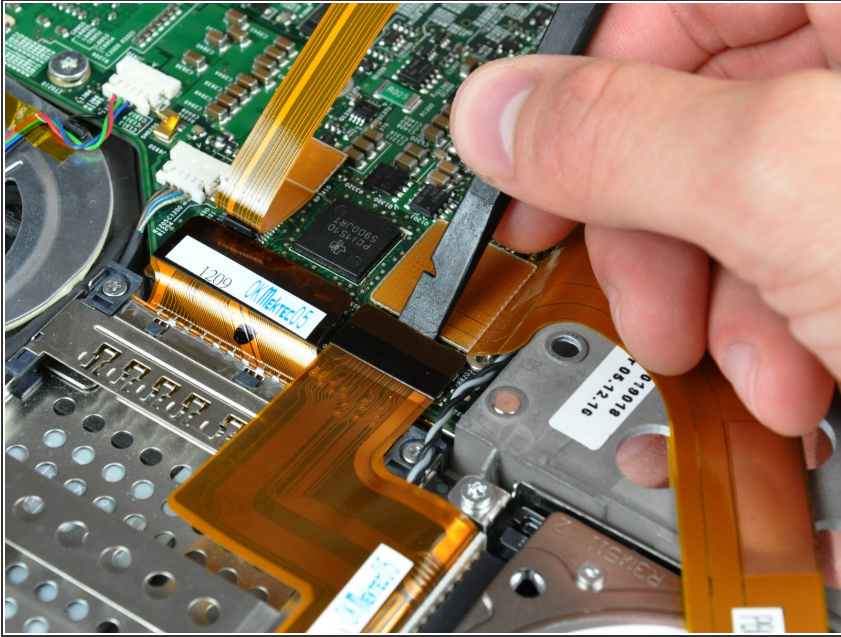
## Step 15



- Lift the modem straight up off the studs on the PC card cage.

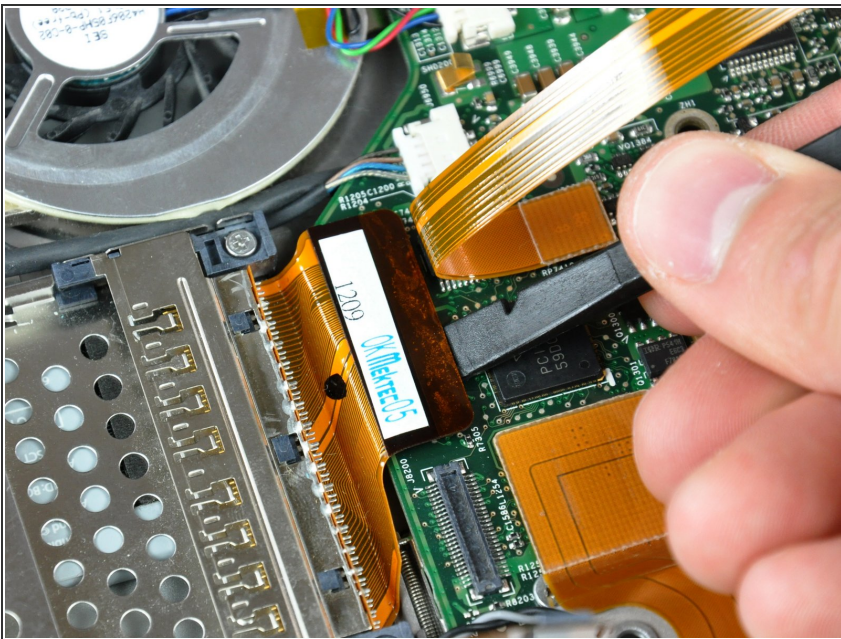


## Step 16 — PC Card Cage



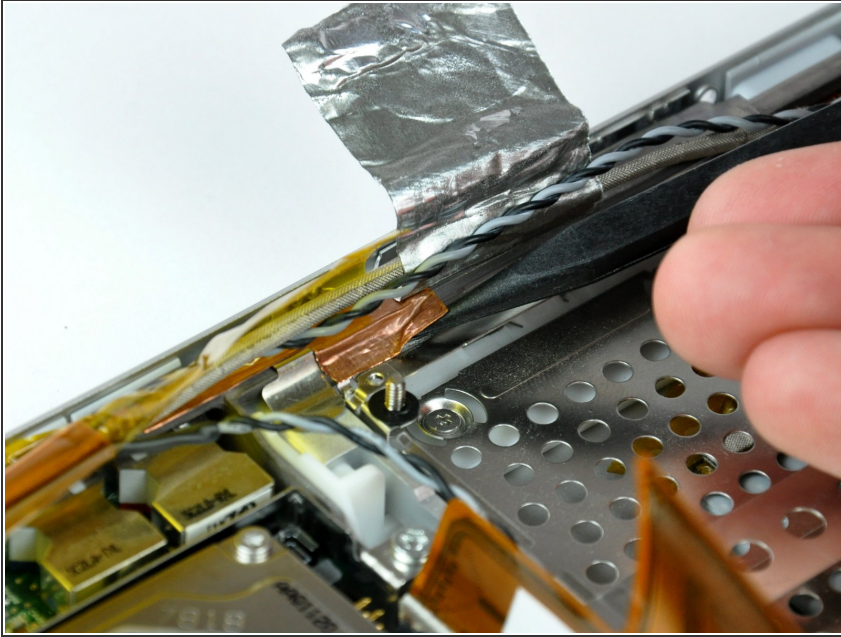
- Use the flat end of a spudger to pry the hard drive cable connector up off the logic board.
- Bend the hard drive cable away from the PC card cage, giving yourself room to remove it.

## Step 17



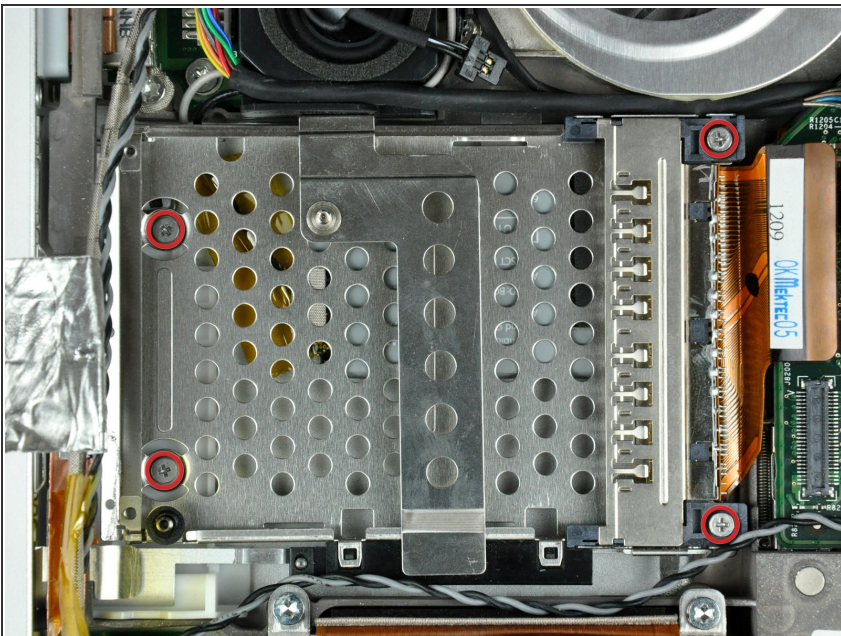
- Use the flat end of a spudger to pry the PC card cage connector up off the logic board.

## Step 18



- Use the tip of a spudger to peel back the small strip of copper tape off the edge of the PC card cage near the side of the lower case.

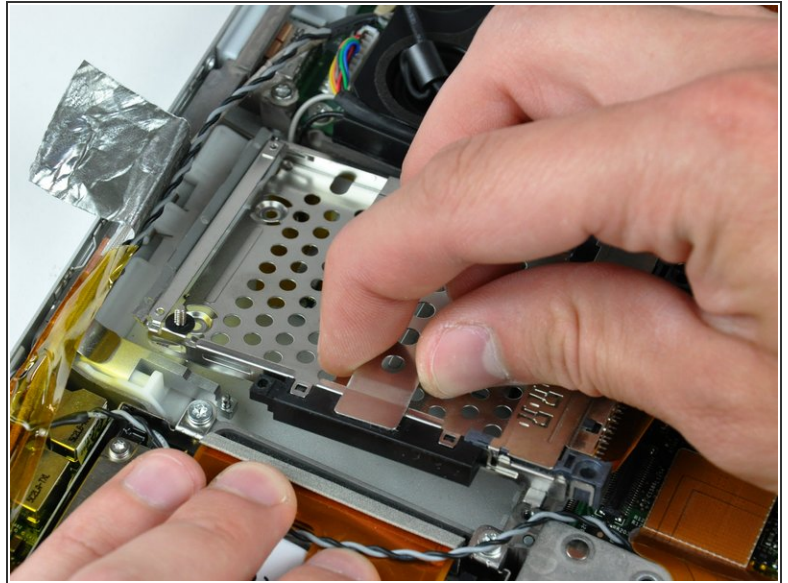
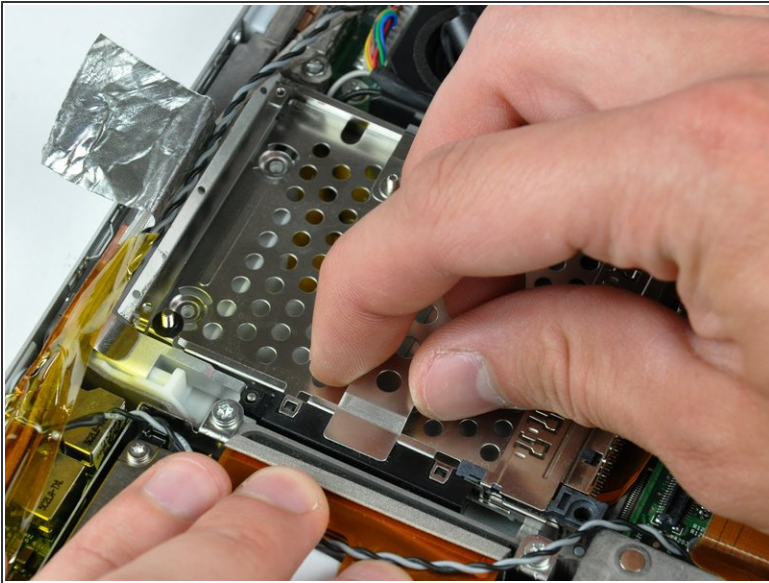
## Step 19



- Remove the four Phillips screws (2-4 mm & 2 -6.8 mm ) securing the PC card cage to the lower case.
- ⓘ The two longer 6.8 mm shouldered screws belong in the end of the PC card cage closest to the logic board.

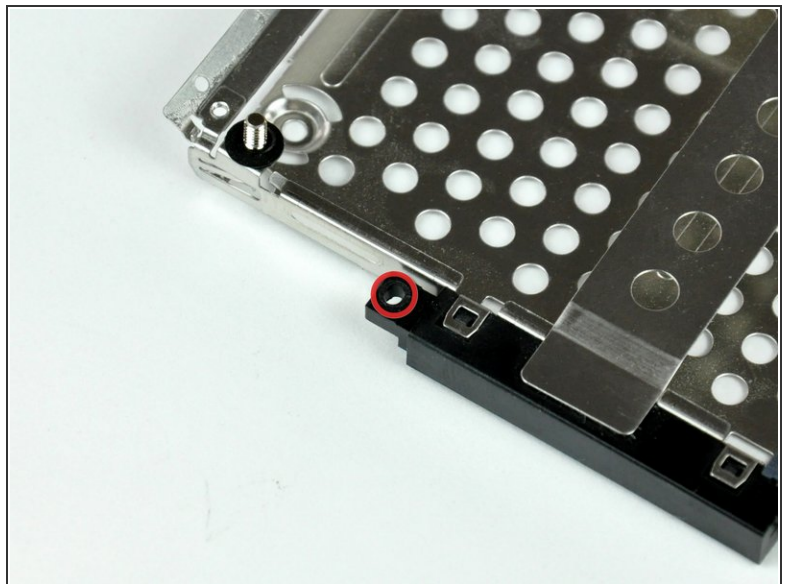
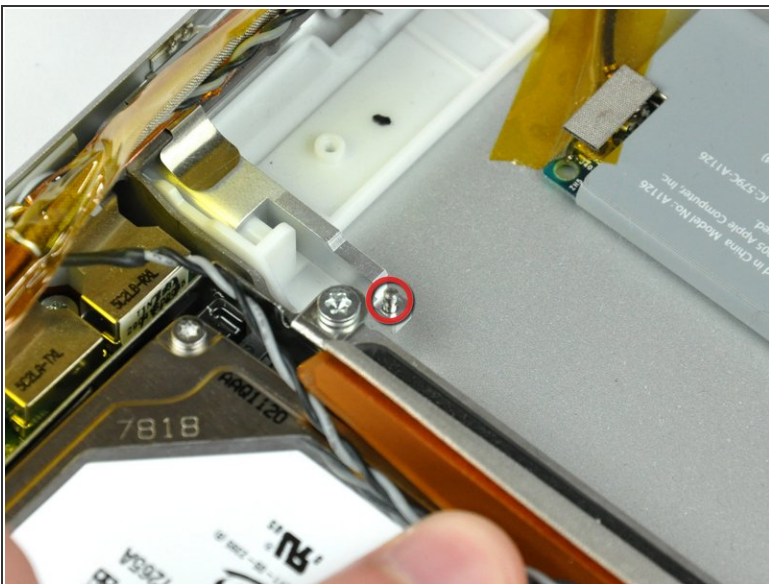


## Step 20



- Lift the PC card cage by its center piece and maneuver it out of the lower case.

## Step 21



- ☞ When reinstalling your PC card cage, be sure to insert the post sticking up from the PC card release button into the hole in the black plastic release mechanism on the PC card cage.

To reassemble your device, follow these instructions in reverse order.