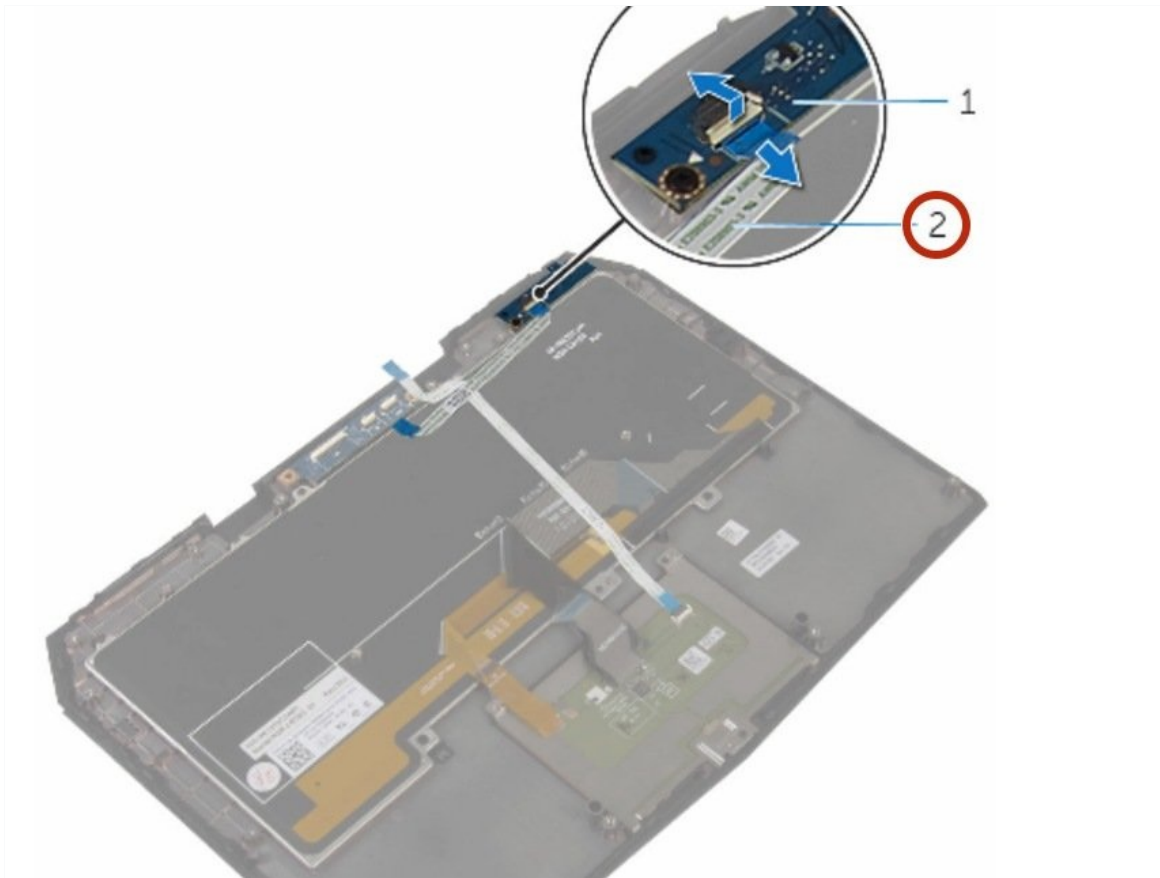


# Dell Alienware 13 R2 Status-Light Board Replacement

In this guide, we will show you how to remove...

Written By: Terrence15



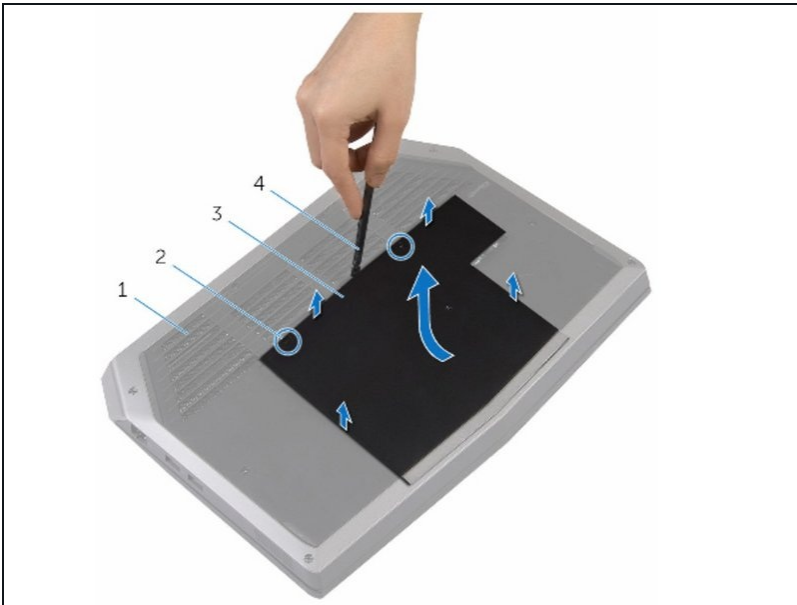
# INTRODUCTION

In this guide, we will show you how to remove and replace the status light board.

## TOOLS:

Pro Tech Toolkit (1)

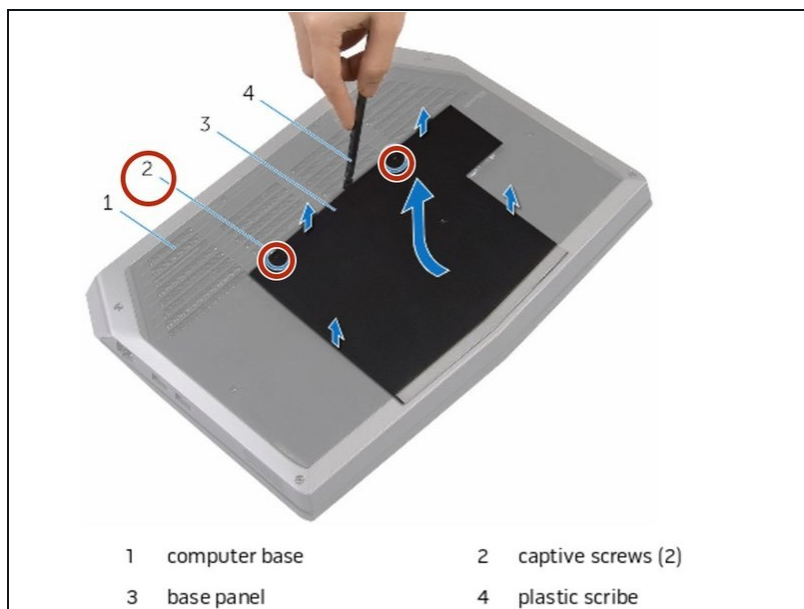
### Step 1 — Turning Over the PC



**⚠ WARNING:** Before working inside your computer, read the safety information that shipped with your computer and follow the steps in [Before Working Inside Your Computer](#) After working inside your computer, follow the instructions in [After Working Inside Your Computer](#) For more safety best practices, see the [regulatory compliance home page](#).

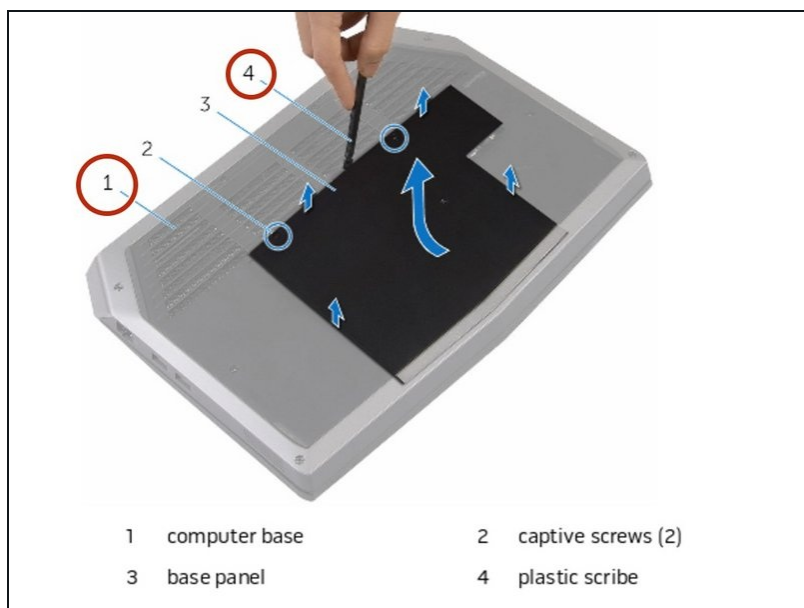
- Close the display and turn the computer over.

## Step 2 — Loosen the screws



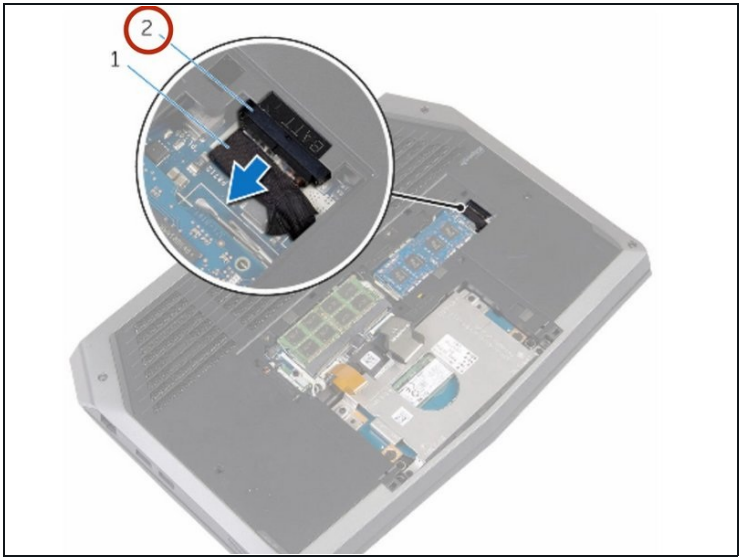
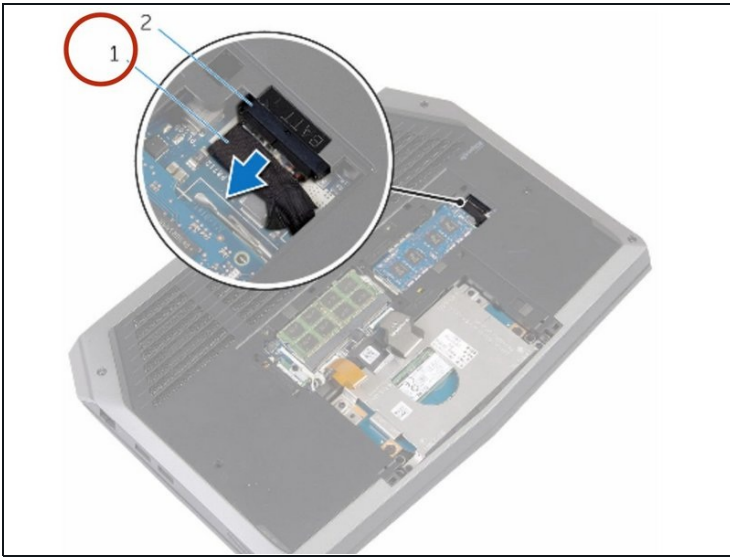
- Loosen the captive screws that secure the base panel to the computer base.

## Step 3 — Releasing the Tabs



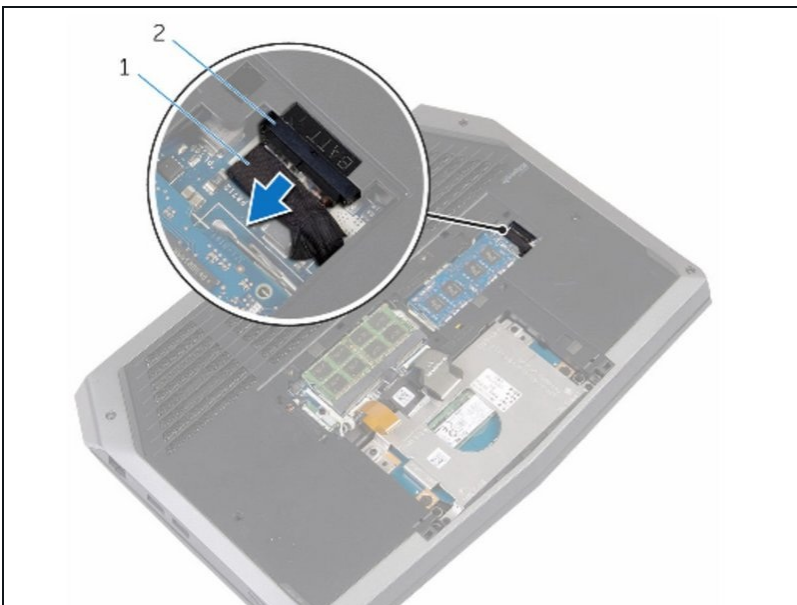
- Using a plastic scribe, gently release the tabs that secure the base panel to the computer base.

## Step 4 — Disconnecting the Battery Cable



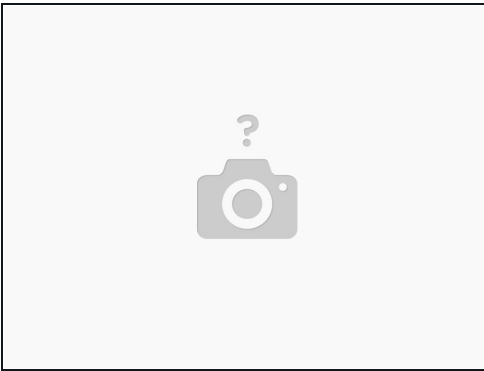
- Disconnect the battery cable from the battery-cable connector.
- Turn the computer over.

## Step 5 — Power Button



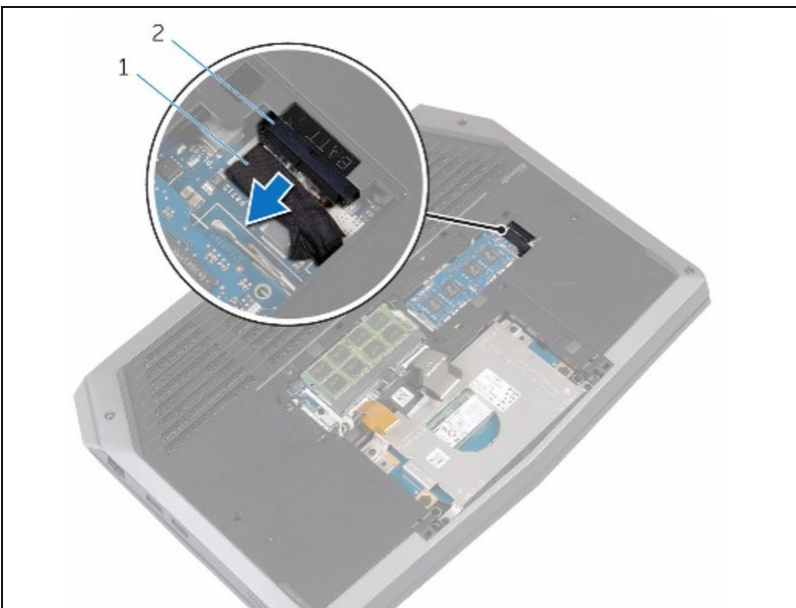
- Press and hold the power button for 5 seconds to ground the system board.

## Step 6 — Connect the Battery Cable



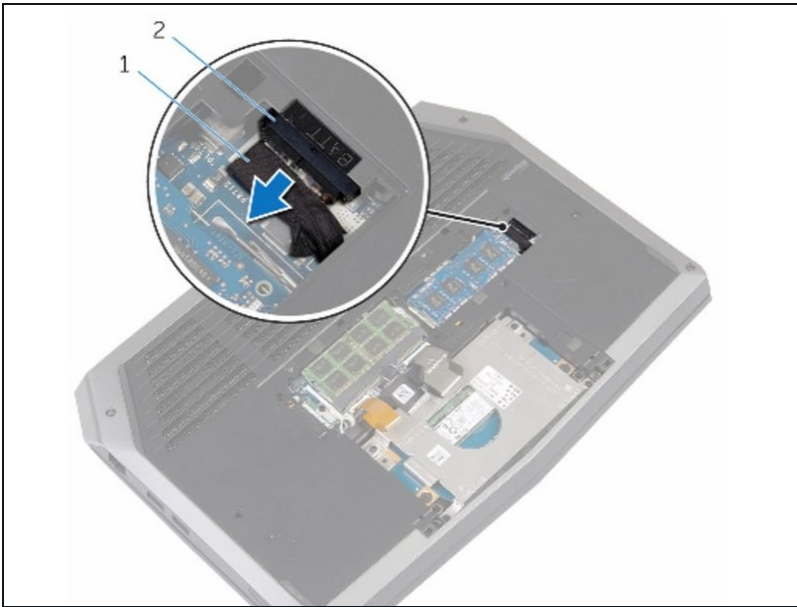
- Connect the battery cable to the battery-cable connector.

## Step 7 — Aligning the tabs



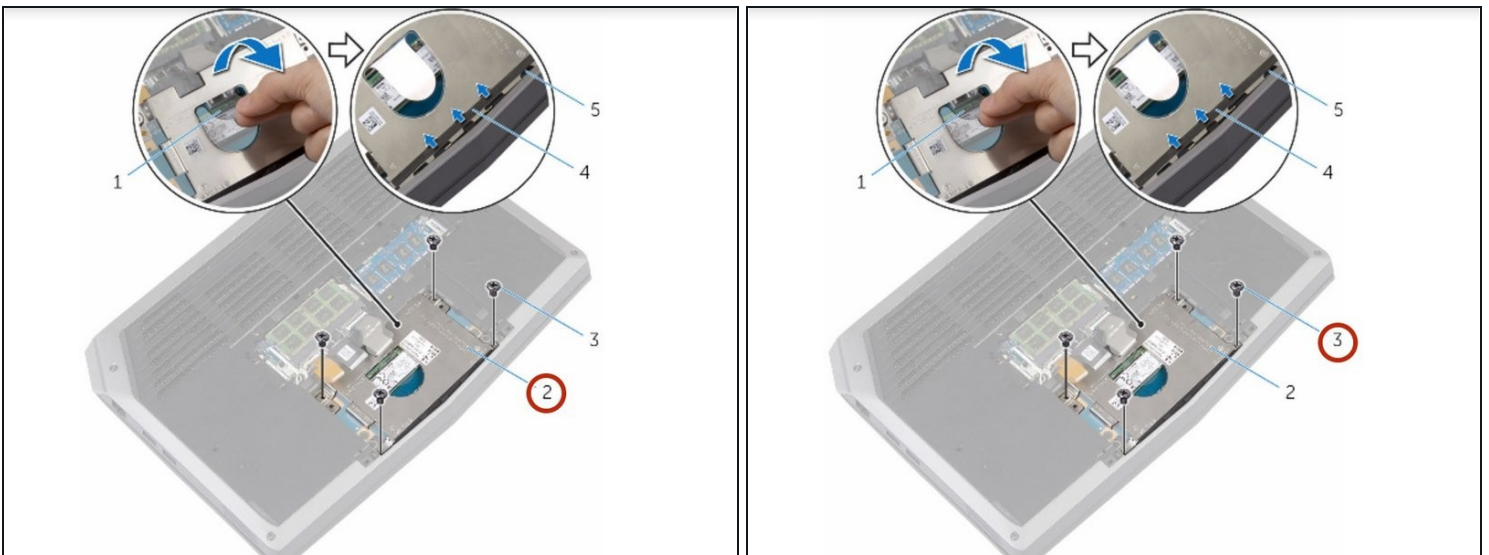
- Align the tabs on the base panel with the slots on the computer base and snap the base panel into place.

## Step 8 — Tighten the screws



- Tighten the captive screws that secure the base panel to the computer base.

## Step 9 — Removing the Screws

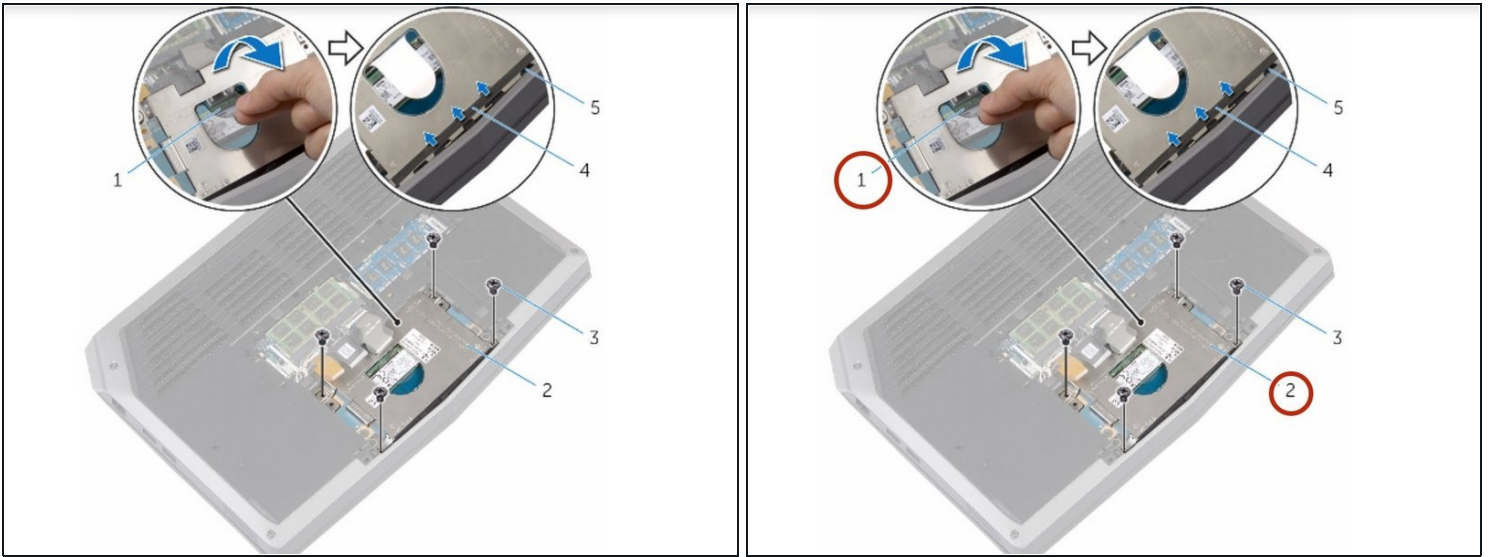


**⚠ WARNING:** Before working inside your computer, read the safety information that shipped with your computer and follow the steps in [Before Working Inside Your Computer](#). After working inside your computer, follow the instructions in [After Working Inside Your Computer](#).

- Remove the screws that secure the solid-state drive bracket to the solid-state drive assembly.



## Step 10 — Peel off Computer Base Tabs



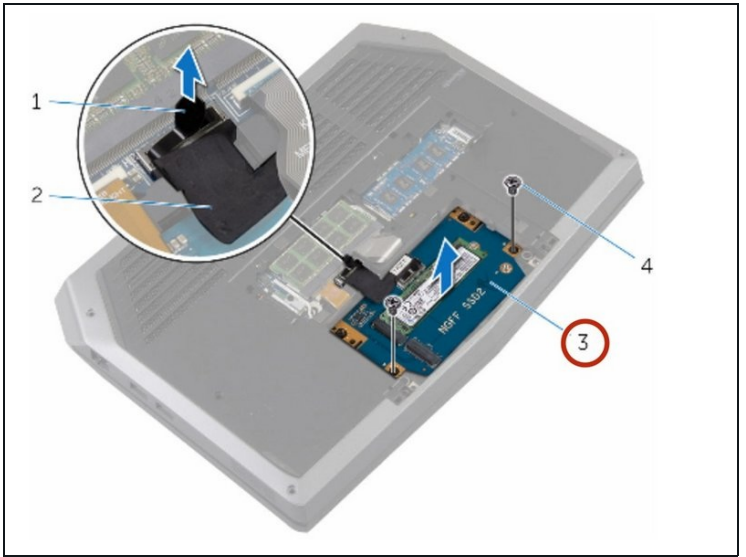
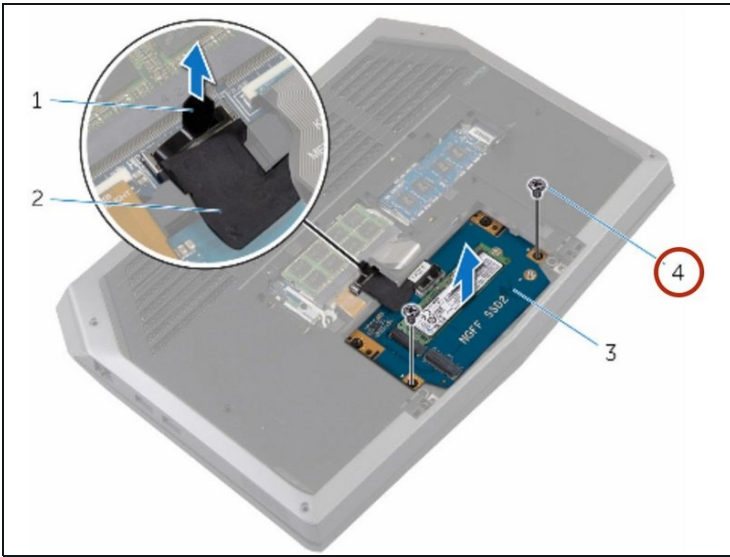
- Using the pull tab, pivot the solid-state drive bracket and peel off the bracket from the tabs on the computer base.

## Step 11 — Disconnecting the Solid-State Drive Cable



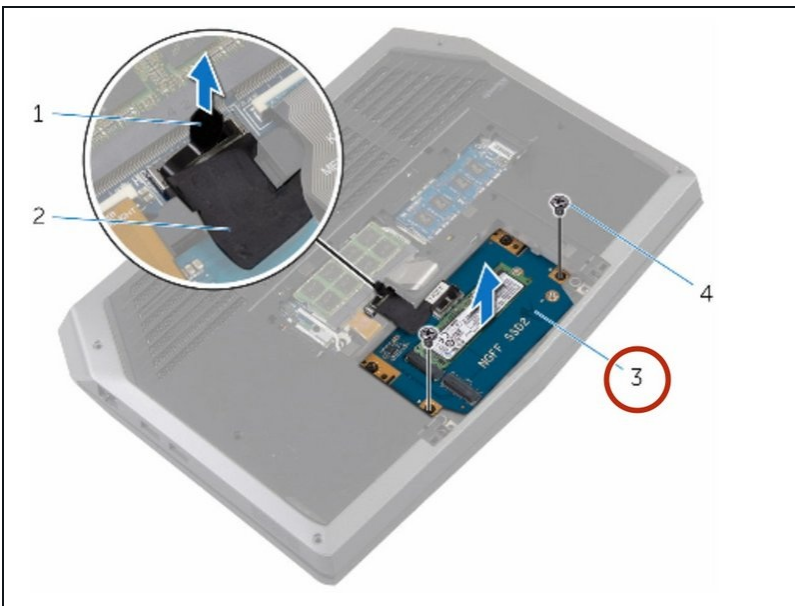
- Using the pull tab, disconnect the solid-state drive cable from the system board.

## Step 12 — Removing the Solid-State Drive



- Remove the screws that secure the solid-state drive assembly to the computer base.

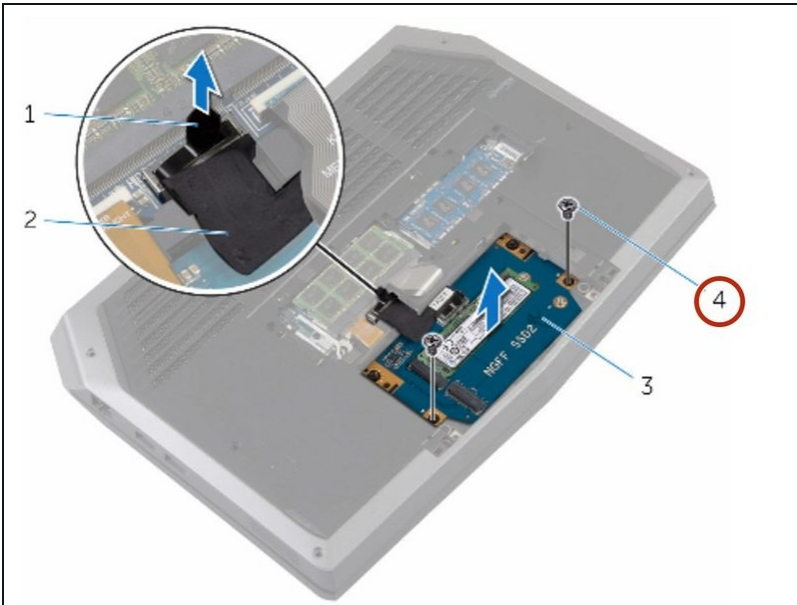
## Step 13 — Lifting the Solid-State Assembly



- Lift the solid-state drive assembly off the computer base.

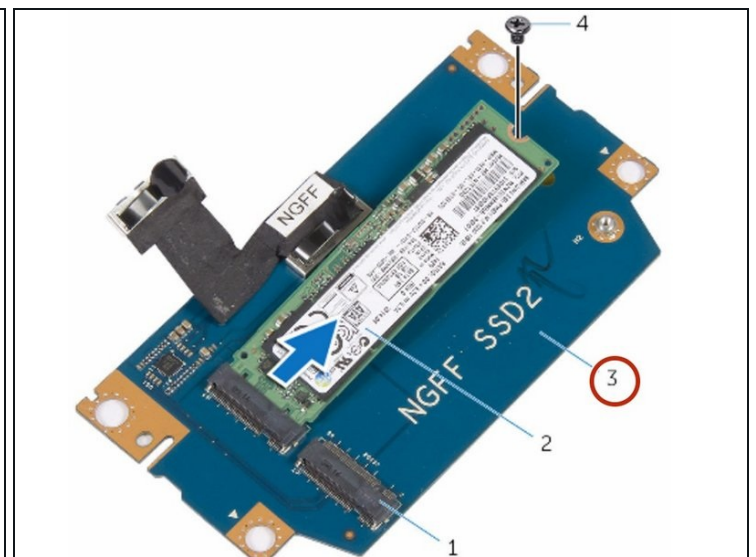
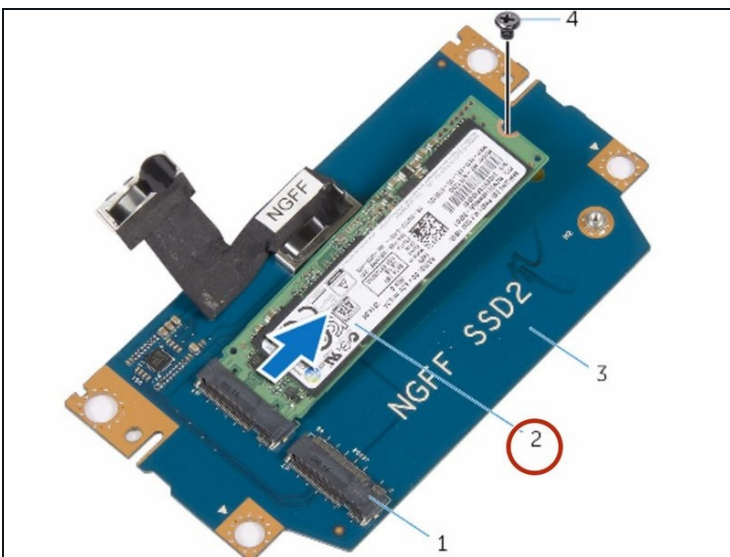


## Step 14 — Remove the Screw



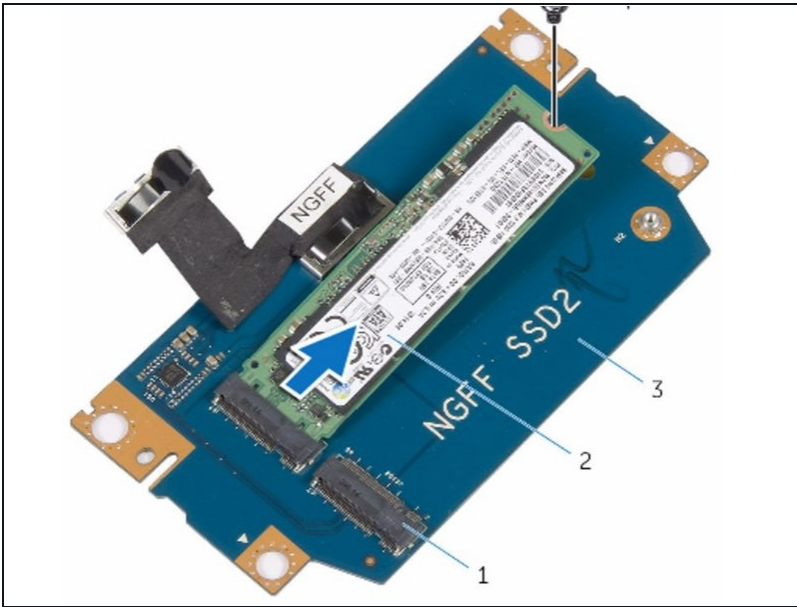
- Remove the screw that secures the solid-state drive to the solid-state drive assembly.

## Step 15 — Lift the Solid-State Assembly.



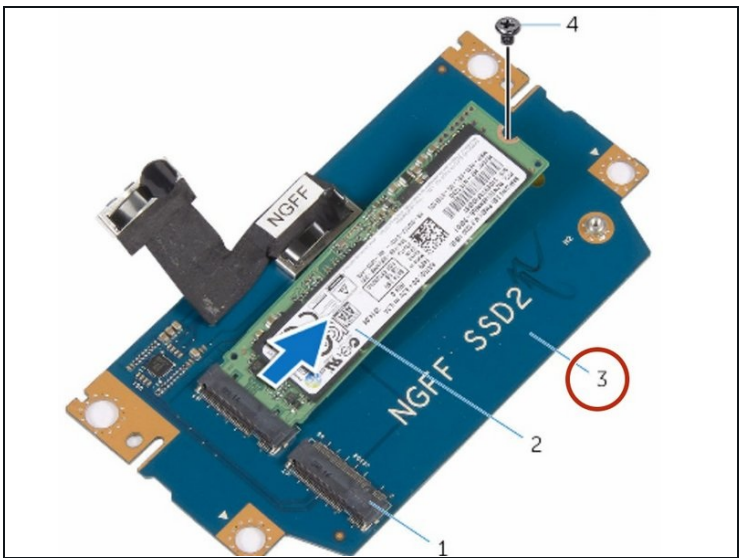
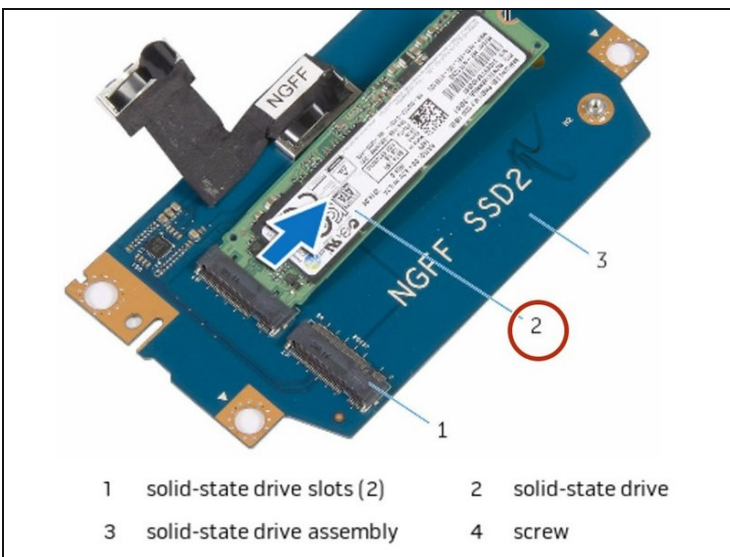
- Slide and lift the solid-state drive off the solid-state drive assembly.

## Step 16 — The New Solid-State Drive



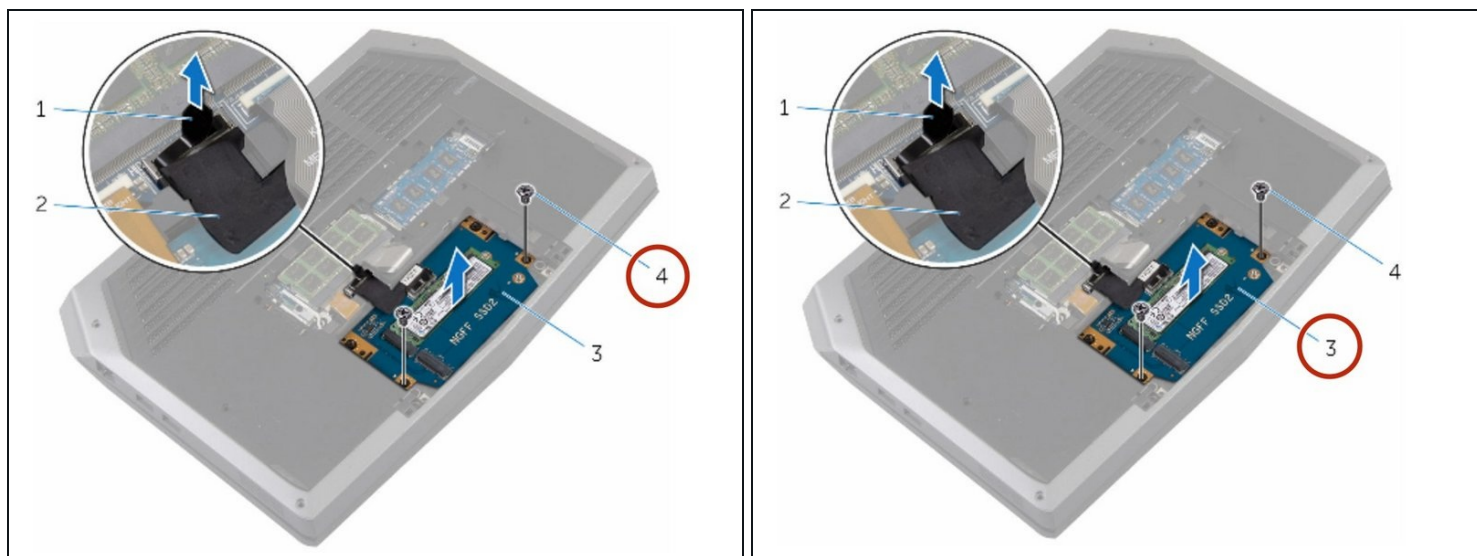
- Slide the **NEW** solid-state drive into the slot on the solid-state drive assembly.

## Step 17 — Screw Replacement



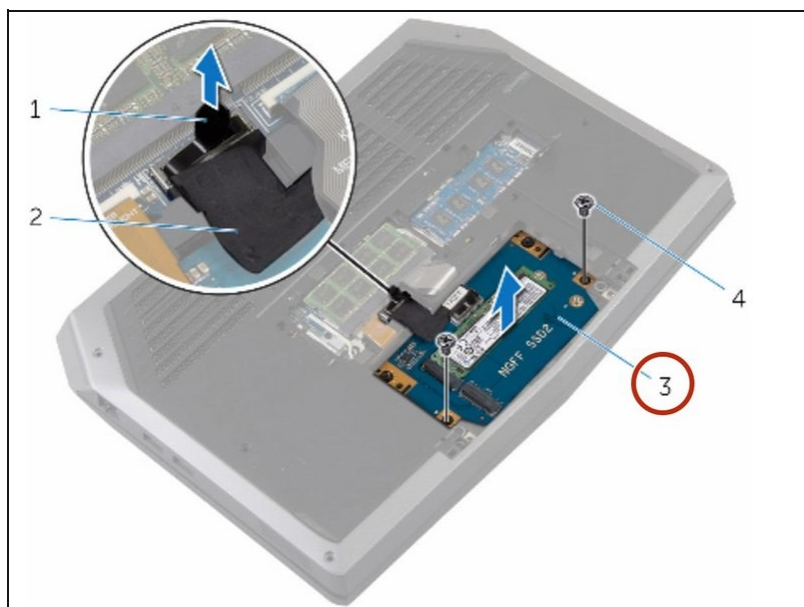
- Replace the screw that secures the solid-state drive to the solid-state drive assembly.

## Step 18 — Align the Screws



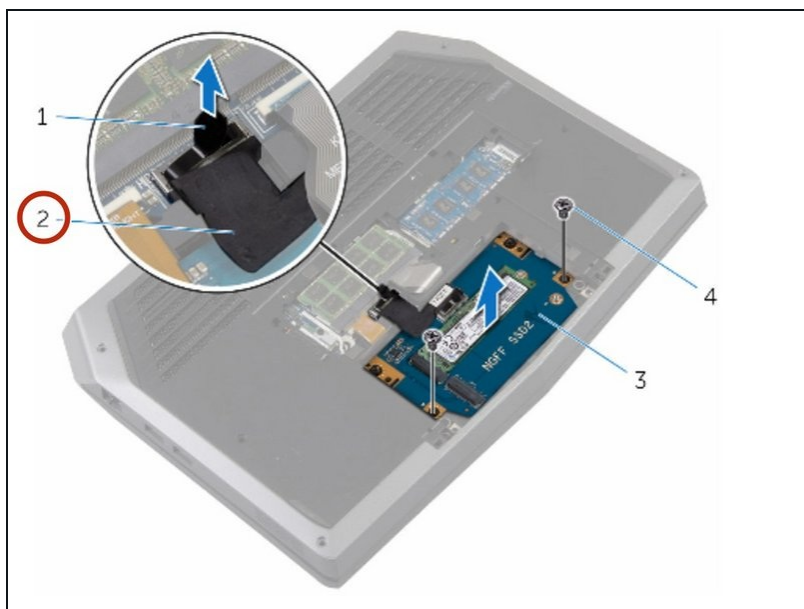
- Align the screw holes on the solid-state drive assembly with the screw holes on the computer base.

## Step 19 — Replace the Screws



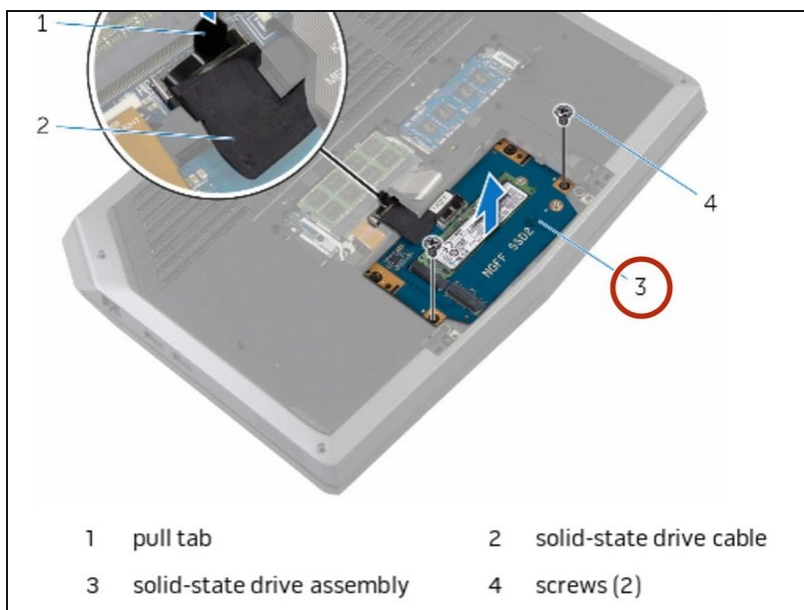
- Replace the screws that secure the solid-state drive assembly to the computer base.

## Step 20 — Connect the Cable to the System Board



- Connect the solid-state drive cable to the system board.

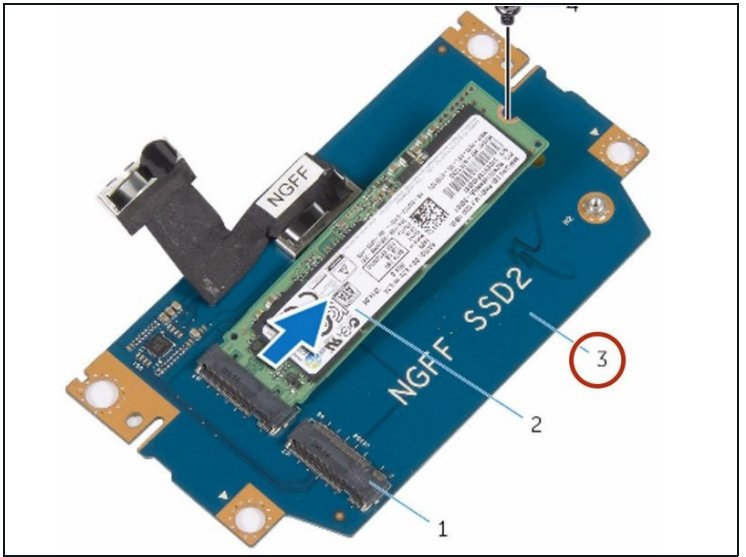
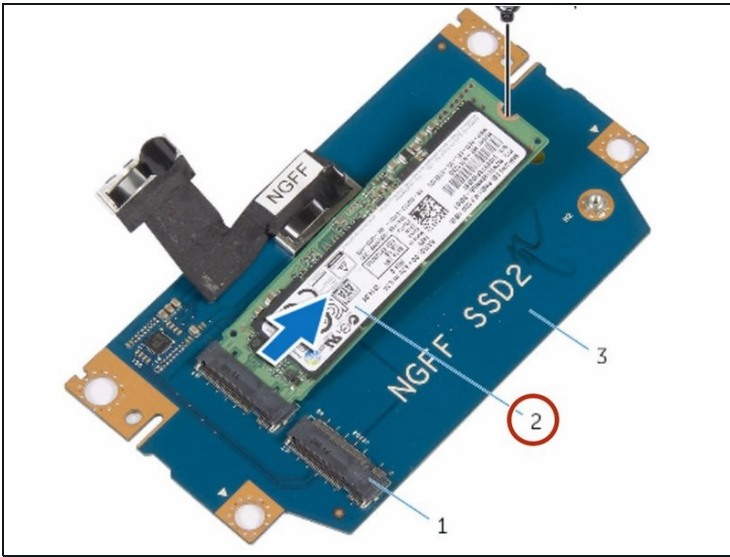
## Step 21 — Align the Screw Holes



- Align the screw holes on the solid-state drive bracket with the screw holes on the solid-state drive assembly.

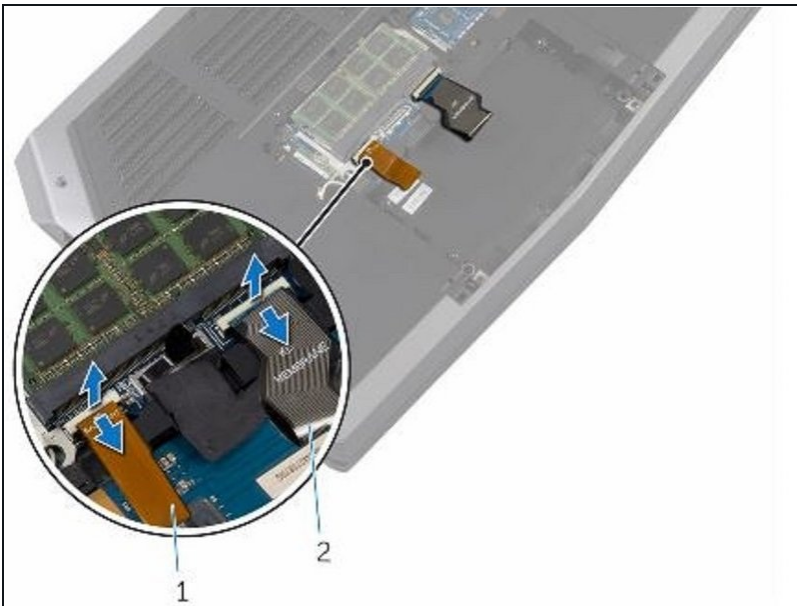


## Step 22 — Replace the Screws



- Replace the screws that secure the solid-state drive bracket to the solid-state drive assembly.

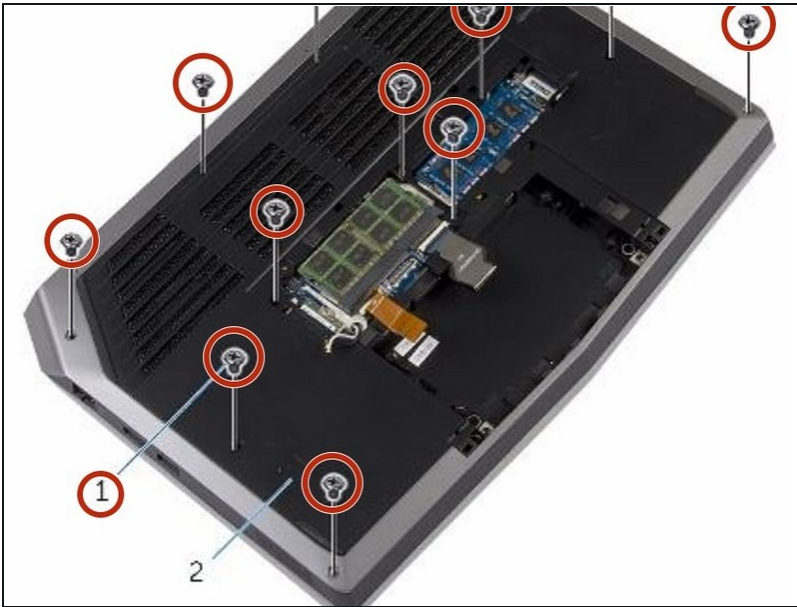
## Step 23 — Lifting the Latches



- Lift the latches and disconnect the keyboard and keyboard-backlight cables from the system board.



## Step 24 — Remove the Screws



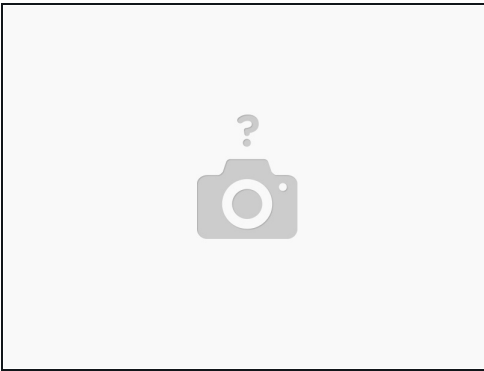
- Remove the screws that secure the palm-rest assembly to the computer base.

## Step 25 — Lift the Computer Base



- Lift the computer base slightly and push the release tabs on the palm-rest assembly until it pops out.

## Step 26 — Turning the Computer Over



- Turn the computer over and open the display as far as possible.

## Step 27 — Prying the Palm-Rest Assembly



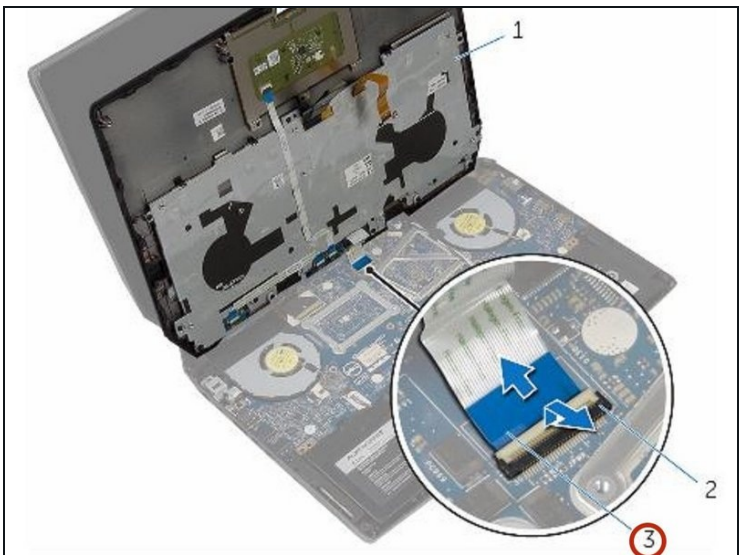
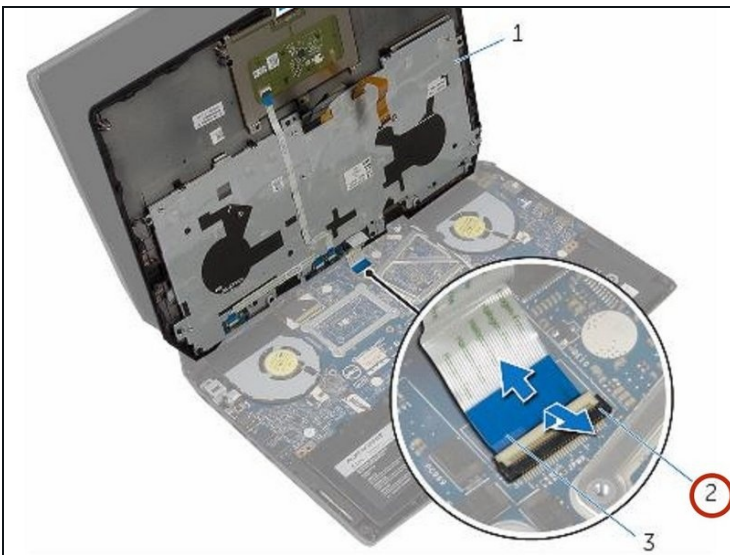
- Using a plastic scribe, pry up along the edges of the palm-rest assembly.

## Step 28 — Lift the Palm-Rest Assembly



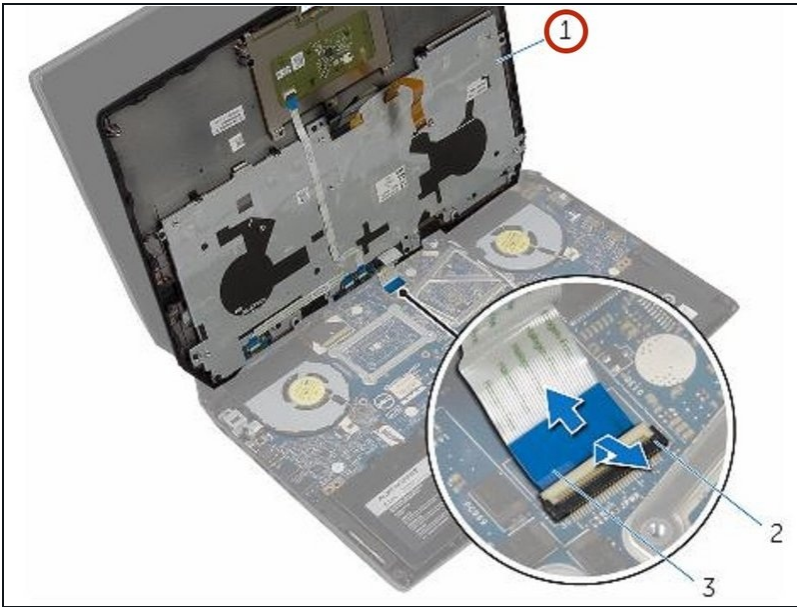
- Gently lift the palm-rest assembly and turn it over.

## Step 29 — Lift the Connector Latch



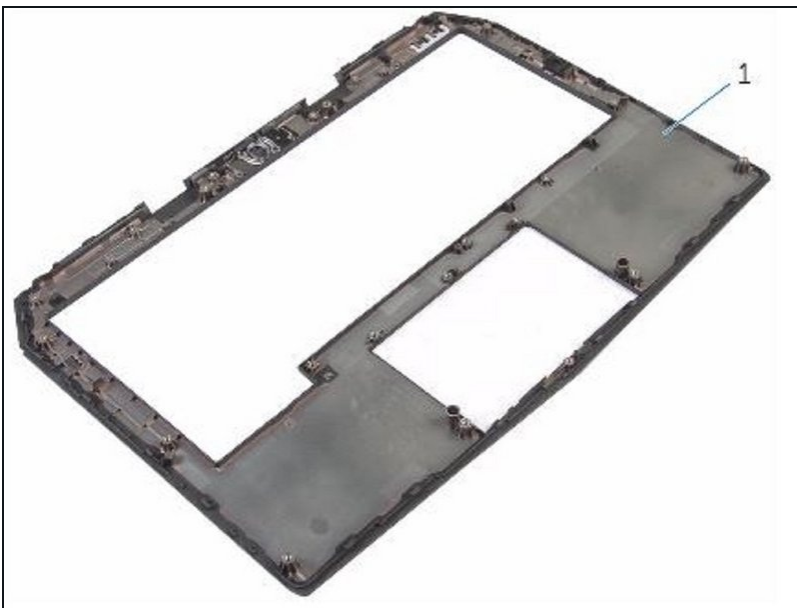
- Lift the connector latch and disconnect the power-button board cable from the system board.

## Step 30 — Lift the Palm-Rest Assembly



- Lift the palm-rest assembly off the computer base.

## Step 31 — Removing



- Remove the keyboard.
- Remove the power-button board.
- Remove the status-light board.
- Remove the Touchpad.

## Step 32 — Replacement



- Replace the touchpad.
- Replace the status-light board.
- Replace the power-button board.
- Replace the keyboard.

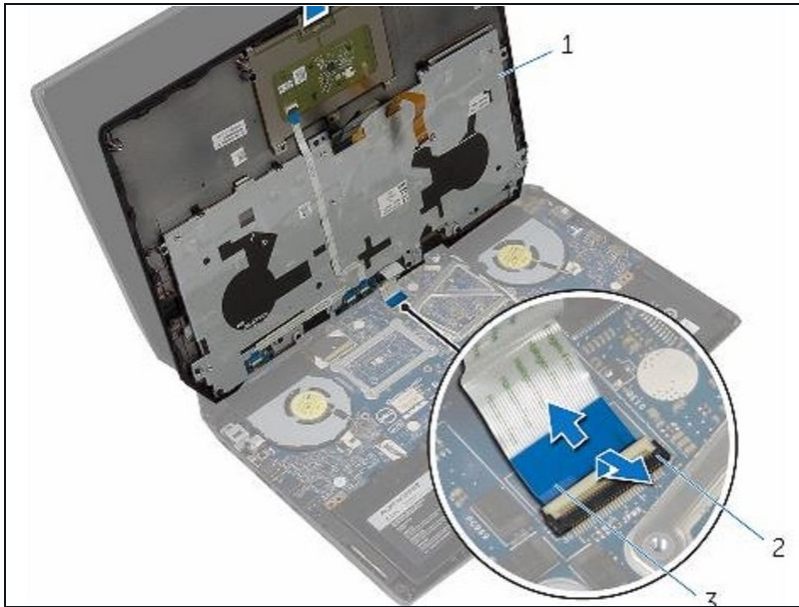
## Step 33 — Connecting the Power-Button Board Cable



- Connect the power-button board cable to the system board.

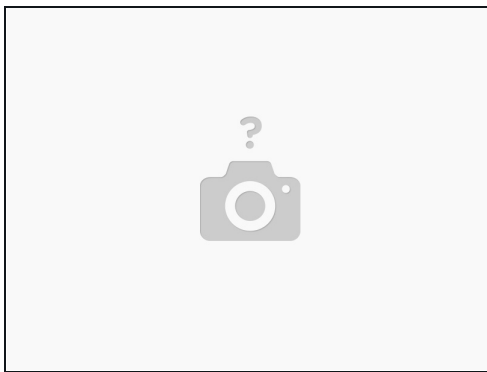


## Step 34 — Align the Palm-Rest Assembly



- Align the palm-rest assembly on the computer base and snap it into place.

## Step 35 — Close the Display



- Close the display and turn the computer over.

## Step 36 — Replace the Screws



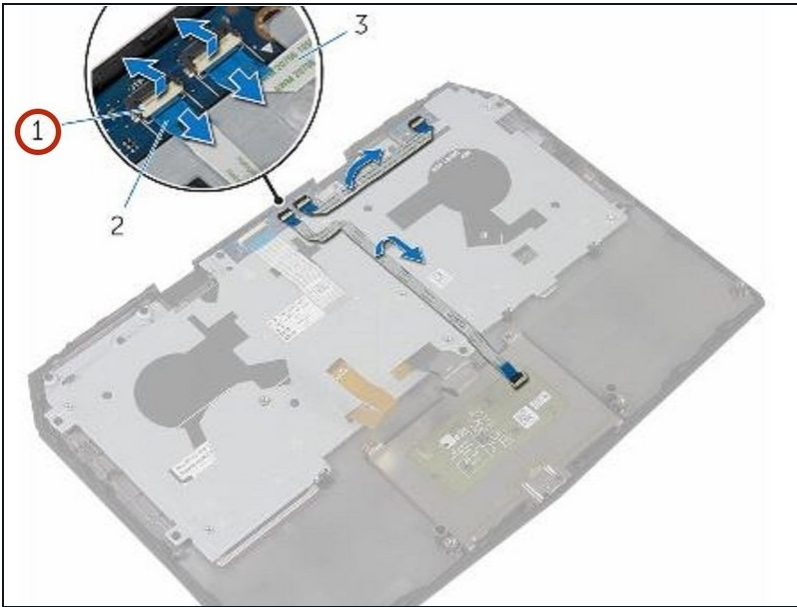
- Replace the screws that secure the palm-rest assembly to the computer base.

## Step 37 — Connect the Keyboard Cable



- Connect the keyboard cable and the keyboard-backlight cable to the system board.

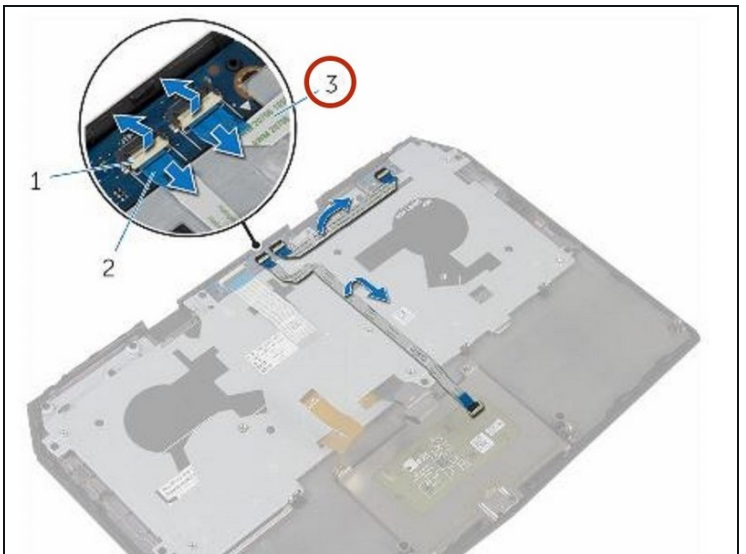
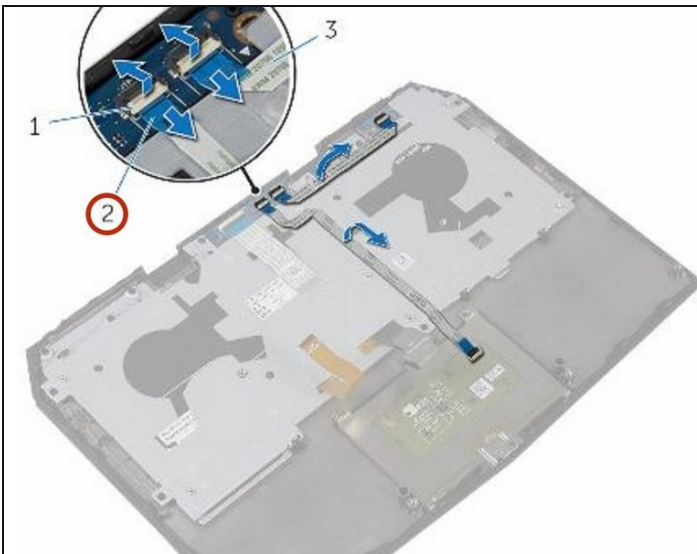
## Step 38 — Lift the Connector Latches



**⚠ WARNING:** Before working inside your computer, read the safety information that shipped with your computer and follow the steps in [Before Working Inside Your Computer](#). After working inside your computer, follow the instructions in [After Working Inside Your Computer](#).

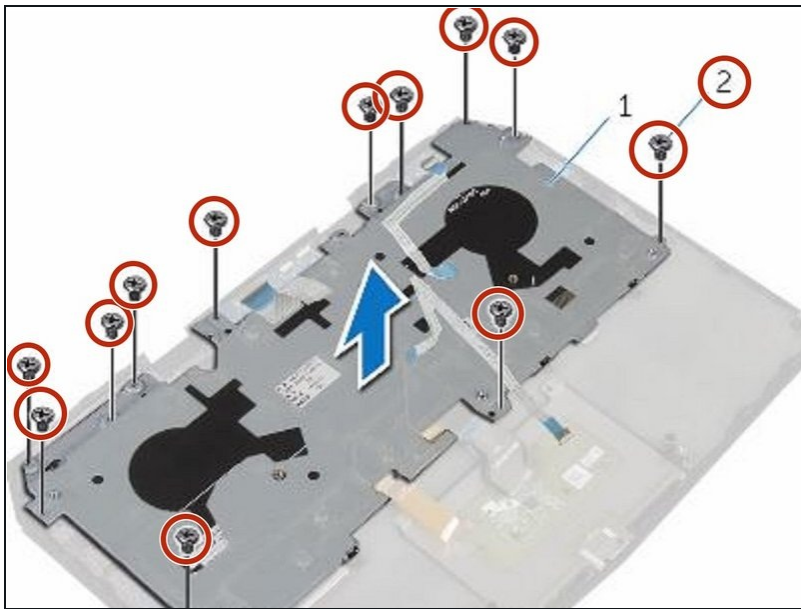
- Lift the connector latches and disconnect the touchpad cable and the status-light cable from the power-button board.

## Step 39 — Peel the Touchpad Cable



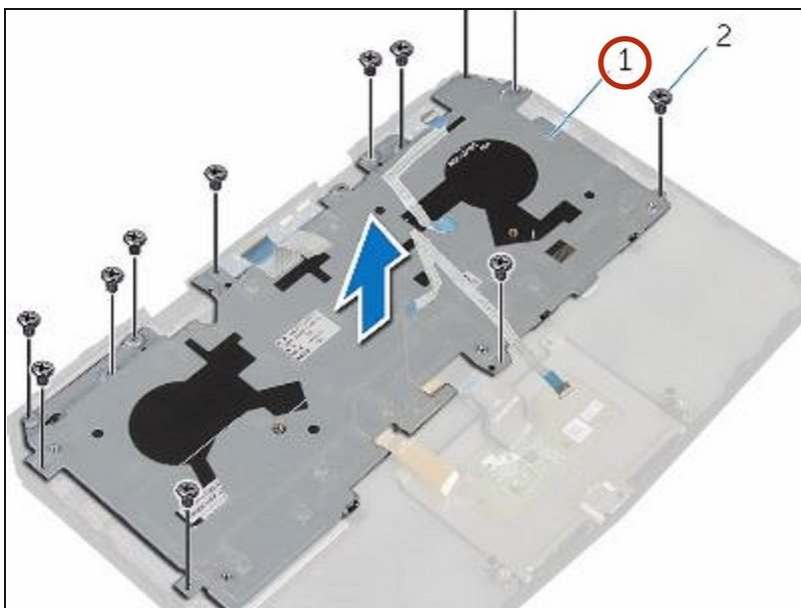
- Peel the touchpad cable and status-light cable off the keyboard bracket.

## Step 40 — Remove the Screws



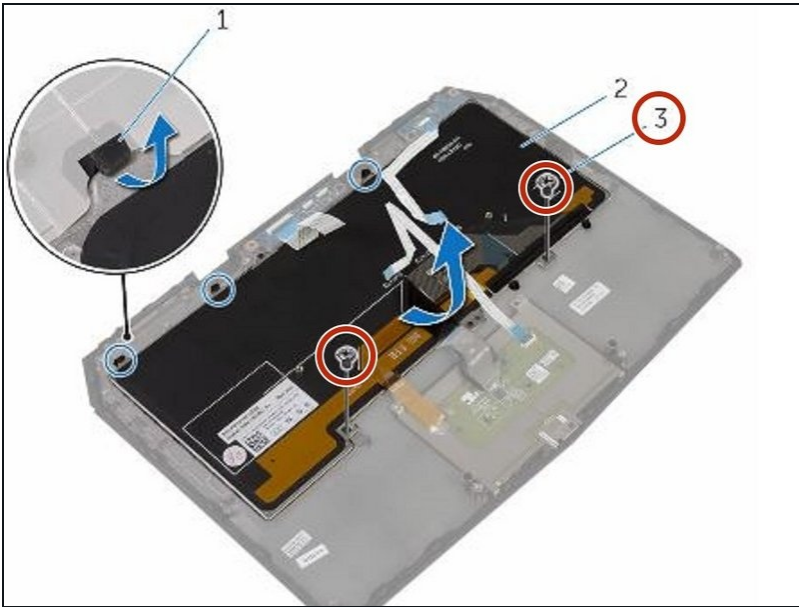
- Remove the screws that secure the keyboard bracket to the palm-rest assembly.

## Step 41 — Lifting the Keyboard Bracket



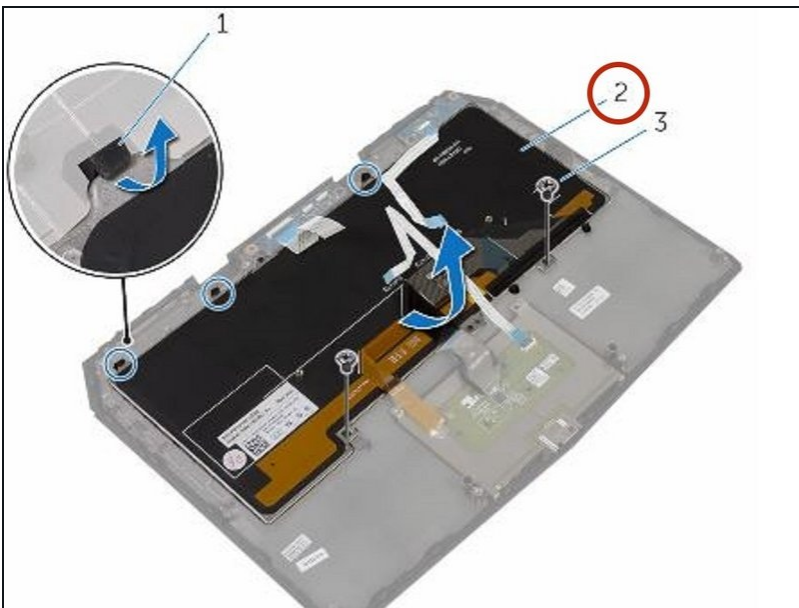
- Lift the keyboard bracket off the palm-rest assembly.

## Step 42 — Remove the Screws



- Remove the screws that secure the keyboard to the palm-rest assembly.

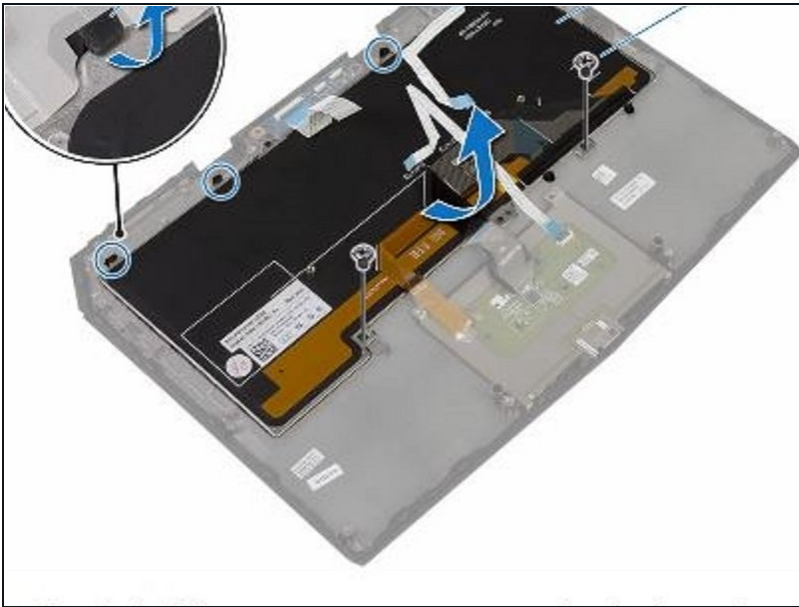
## Step 43 — Slide and Lift the Keyboard



- Slide and lift the keyboard, along with the cables, off the palm-rest assembly.

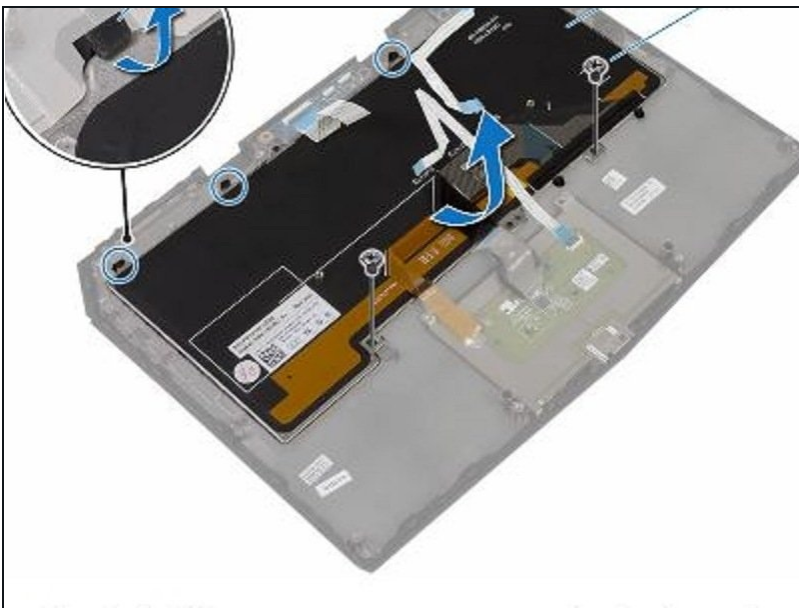


## Step 44 — Align the Screw Holes



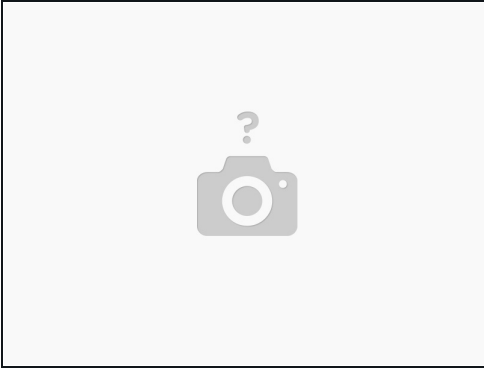
- Align the screw holes on the **NEW** keyboard with the screw holes on the palm-rest assembly.

## Step 45 — Replace the Screws



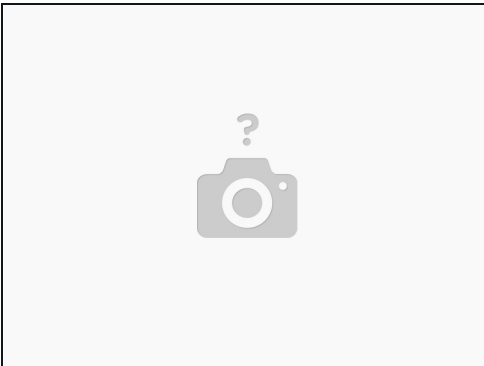
- Replace the screws that secure the keyboard to the palm-rest assembly.

## Step 46 — Align the Screw Holes



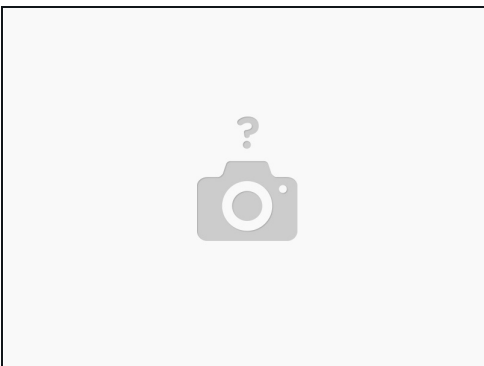
- Align the screw holes on the keyboard bracket with the screw holes on the palm-rest assembly.

## Step 47 — Replace the Screws



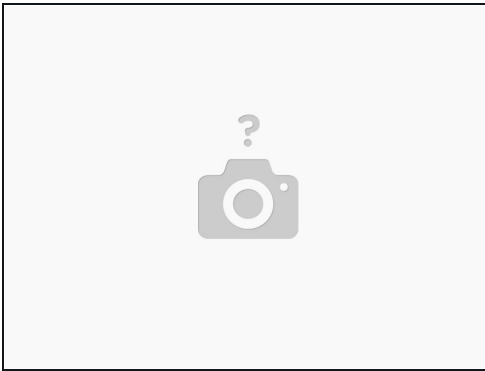
- Replace the screws that secure the keyboard bracket to the palm-rest assembly.

## Step 48 — Adhere the Touchpad Cable



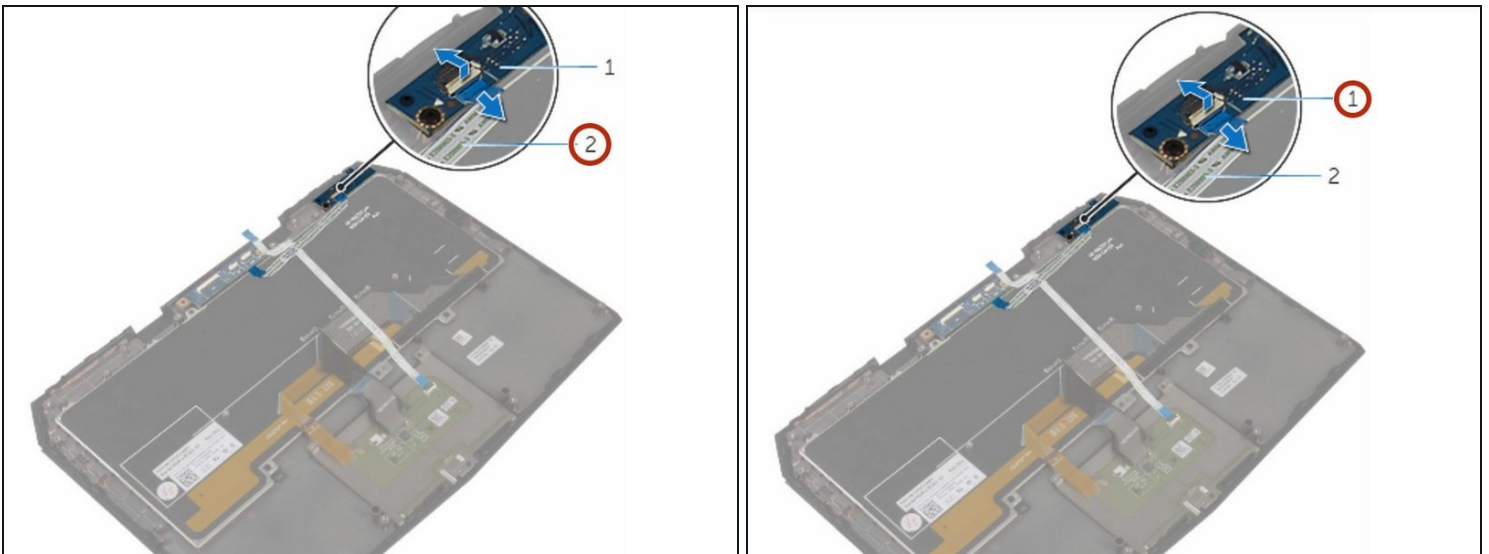
- Adhere the touchpad cable and status-light cable to the keyboard bracket.

## Step 49 — Slide the Cable



- Slide the touchpad cable and the status-light cable into their respective connectors on the power-button board and press down the latches to secure the cables.

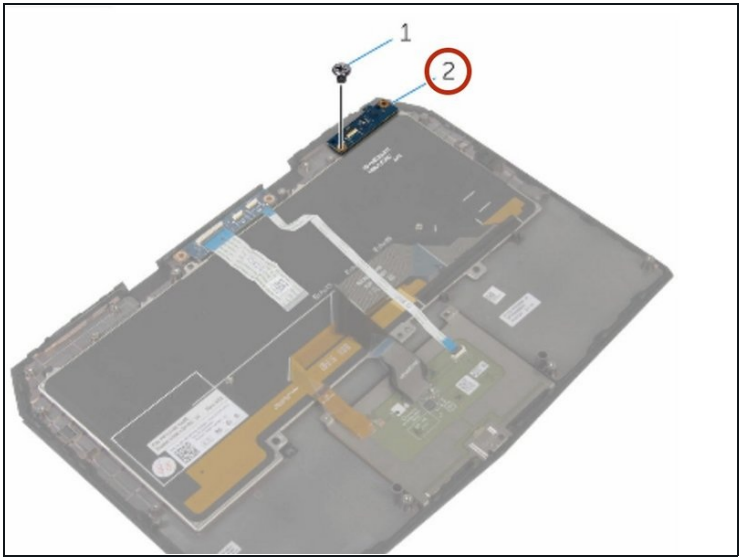
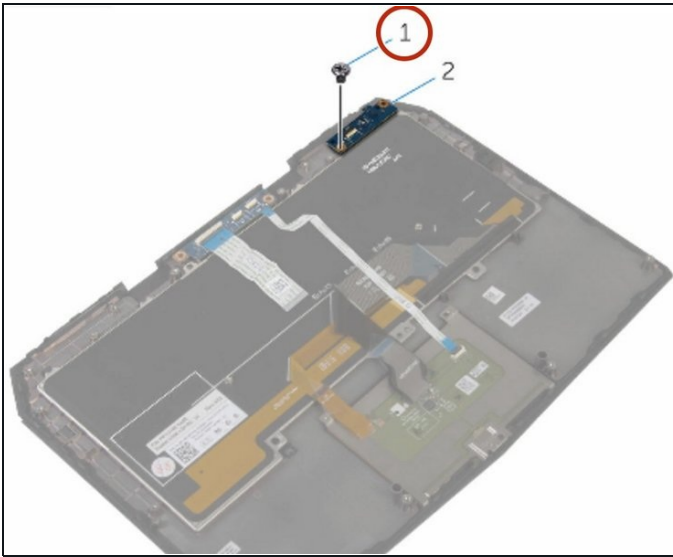
## Step 50 — Disconnecting the Status-Light Board Cable



**⚠ WARNING:** Before working inside your computer, read the safety information that shipped with your computer and follow the steps in [Before Working Inside Your Computer](#). After working inside your computer, follow the instructions in [After Working Inside Your Computer](#).

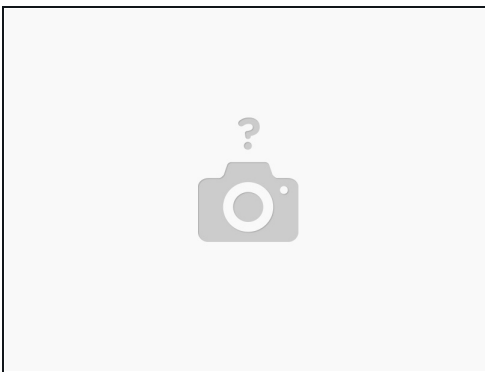
- Lift the connector latch and disconnect the status-light board cable from the status-light board.

## Step 51 — Remove the Screw



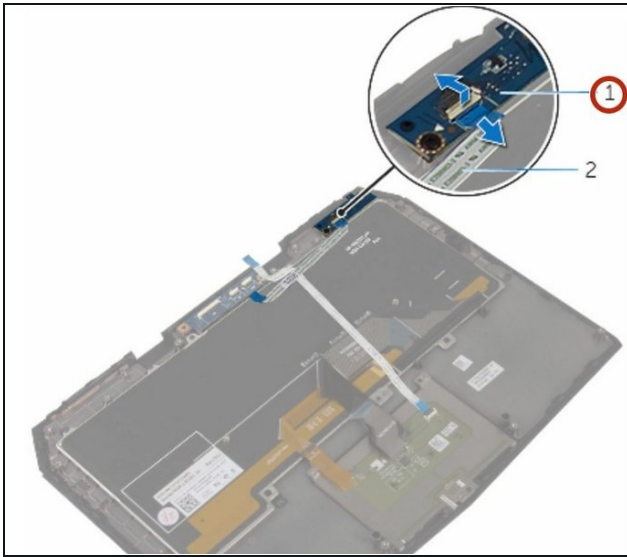
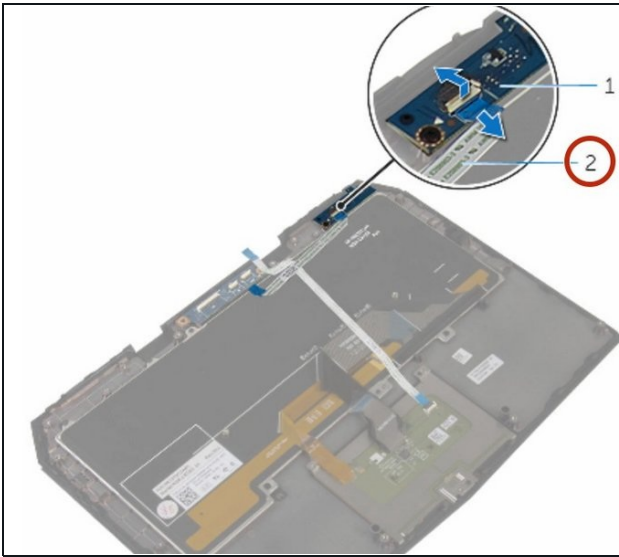
- Remove the screw that secures the status-light board to the palm-rest assembly.

## Step 52 — Lift the Status-Light Board



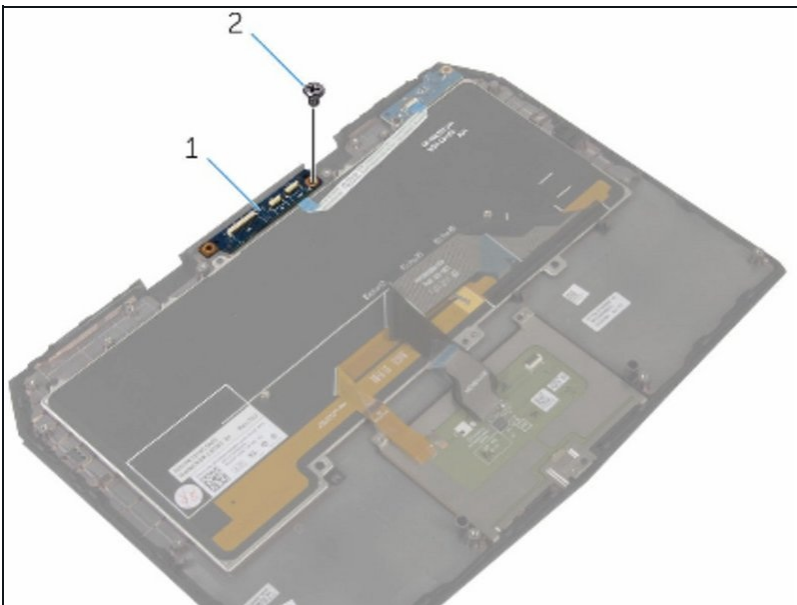
- Lift the status-light board off the palm-rest assembly.

## Step 53 — Sliding the Cable



- Slide the status-light board cable into the status-light board connector and press down the latch to secure the cable.

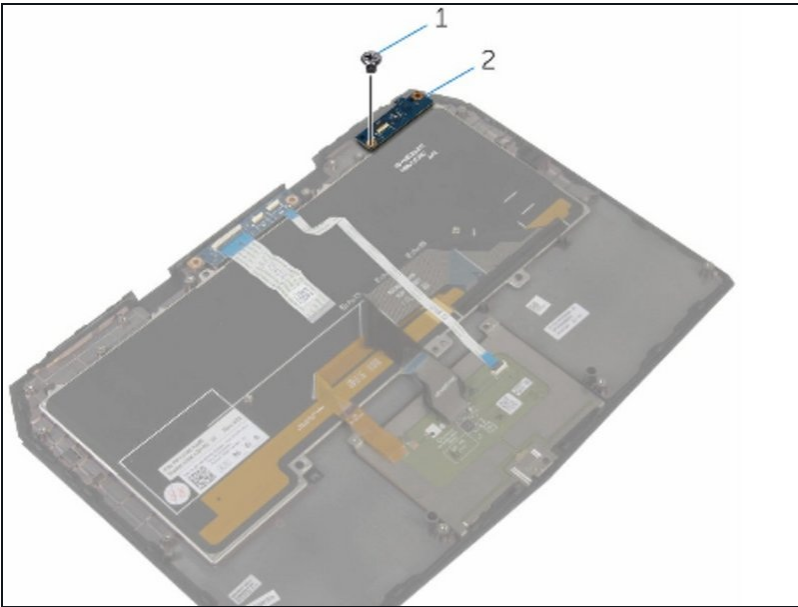
## Step 54 — Align the Screw Hole



- Align the screw hole on the status-light board with the screw hole on the palm-rest assembly.



## Step 55 — Replace the Screw



- Replace the screw that secures the status-light board to the palm-rest assembly.

---

To reassemble your device, follow these instructions in reverse order.