



# 2007 Mazda 6 Door Speaker Replacement

This guide will show you how to replace your Mazda 6 car door speaker by removing the door paneling, and switching out the speakers.

Written By: Micki Williams



## INTRODUCTION

This is the perfect guide if you're looking to replace stock speakers with a nicer set, or if you've blown out your current speakers in your Mazda 6. Speakers are fairly easy to replace as long as you aren't completely rewiring the system.



### TOOLS:

- [10mm Wrench](#) (1)
- [Phillips #2 Screwdriver](#) (1)
- [Flathead 3/32" or 2.5 mm Screwdriver](#) (1)
- [Socket Wrench](#) (1)

8mm

- [Flathead Screwdriver](#) (1)

*for prying*



### PARTS:

- [6"x8" Vehicle Speaker](#) (1)

*It's usually a set of 2*



## Step 1 — Speaker



- Pop open the hood and locate the battery.
- Loosen the bolt on the positive terminal with the 10mm wrench.
- Pull up and detach the terminal to disrupt power flow.

## Step 2



- Pry open the screw cover on the inside of the handle with the small flathead screwdriver.
- Unscrew the handle with the phillips screwdriver.

## Step 3



- Pull the handle cover down and out of its pocket.
- Slide the cover to the right off the handle.
- Detach the tab on the back of the locking mechanism to completely remove the cover.



## Step 4



- Peel off the rubber insert in the inner arm rest.
- ⓘ The insert should be glued down if this is the first time you are disassembling the door.
- Unscrew the inner arm rest panel with the phillips screwdriver. This screw is holding the arm rest panel together.
- ⓘ On the passenger side the screw will be inside the upright handle. Pry off the handle cover and unscrew the screw hidden inside.

## Step 5



- Pry the power window switch case out of the arm rest with your flathead screwdriver.
- Detach all tabs on the back of the switch case to remove completely.

## Step 6



- Pop out the cover by the outside mirror to relieve door tension.
- ⓘ Pushing from the left side of the cover might help.

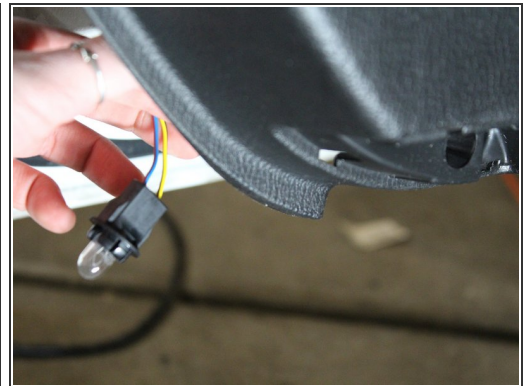
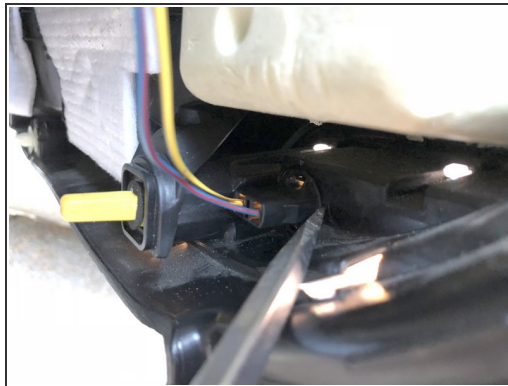


## Step 7



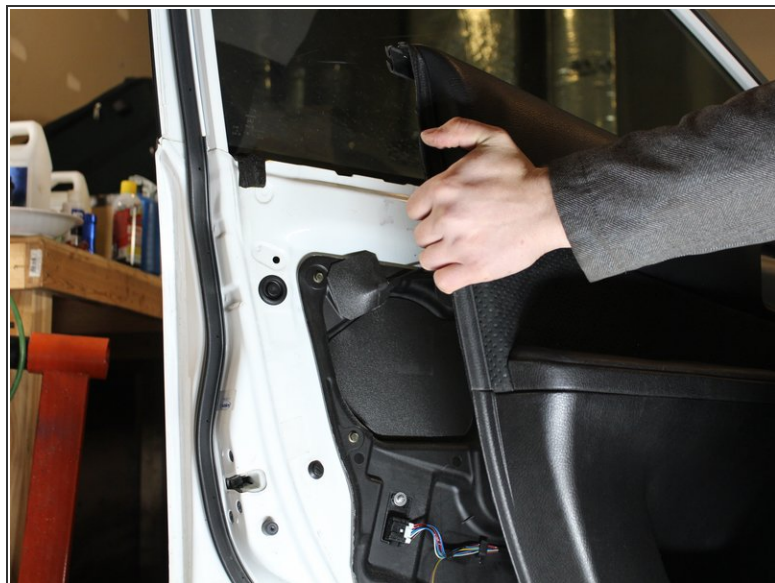
- Pop out the door panel starting on the side closest to the door hinges.
- ⓘ You will have to tug it roughly to detach the tabs holding the panel in place.

## Step 8



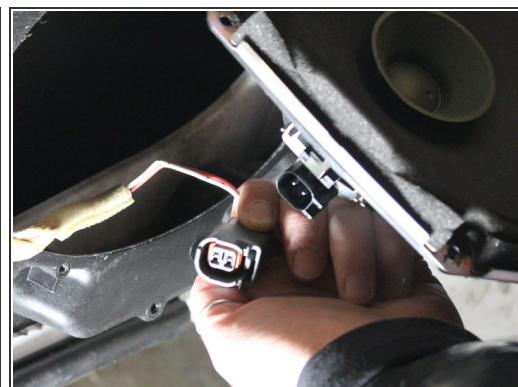
- ⓘ (OPTIONAL) Pop off the light cover.
- Use a flathead screwdriver to press the clip holding the light from the back of the door and pull the lightbulb out.

## Step 9



- Lift the door panel up and out to remove.

## Step 10



- Unscrew four bolts holding the speaker with the ratchet.
- Pull out the speaker.
- Detach the connector in the back.

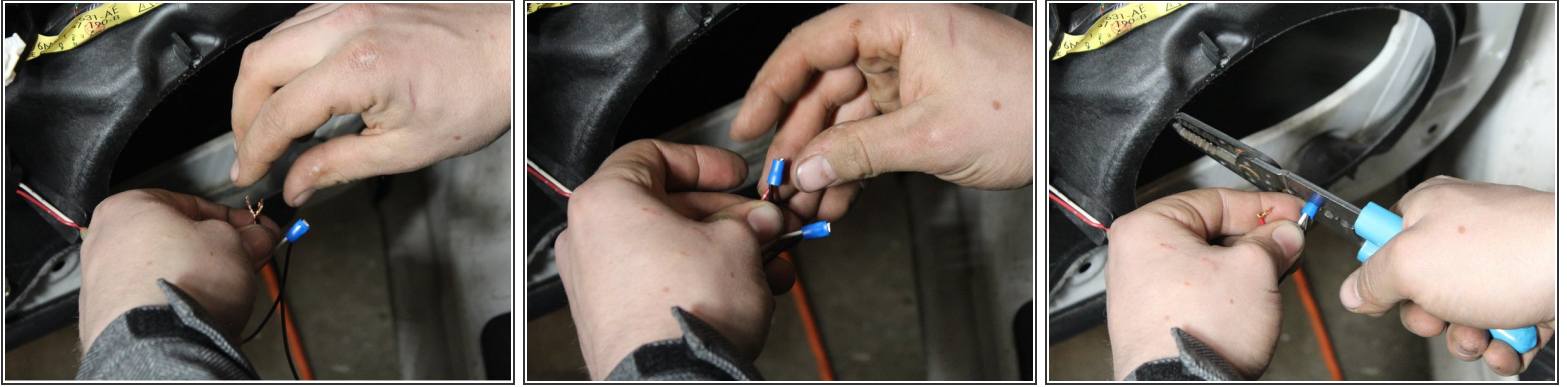


## Step 11



- Cut and strip the wires that were connected to the speaker.

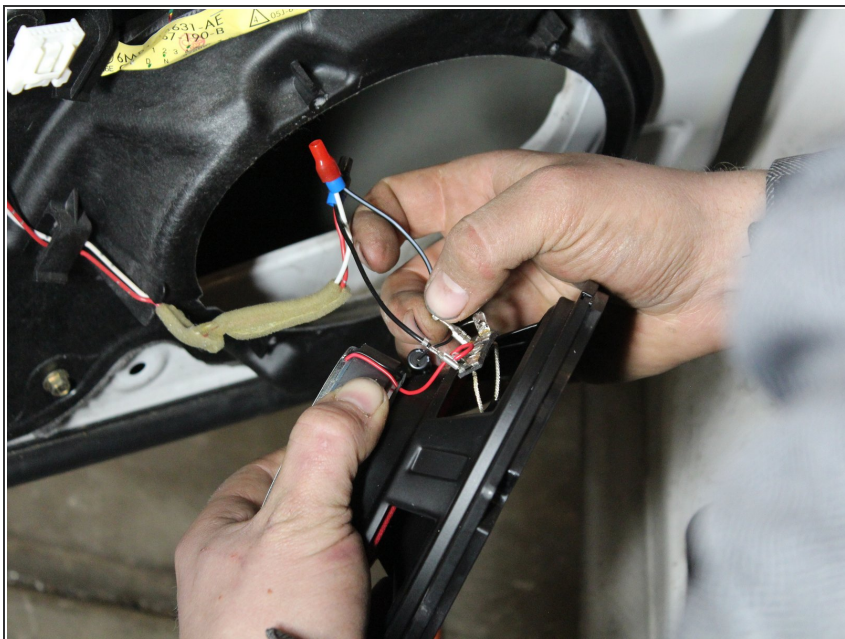
## Step 12



- ⓘ Check the speaker connectors to determine which one connects to the positive and negative terminals. The speaker should have a + sign next to the positive terminal.
- Splice the wires from the door to the new speaker's wires making sure to connect the correct wire polarity. (The small connector wire from the speaker is positive.)
- ⓘ In the driver side door, the positive wire is red and the negative wire is white.
- ⓘ In the passenger side door, the positive wire is blue and the negative wire is yellow.
- Cover and crimp the wires with the butt-end connectors.



## Step 13



- Attach to the speaker terminals.
- ⓘ The speaker should indicate the positive terminal with a + sign.

## Step 14



- Insert the new speaker and screw into place.

To reassemble your device, follow these instructions in reverse order.