



# Nintendo Game Boy Advance SP Screen Replacement

In this guide, I will show you how to replace a...

Written By: Lucas Hoekstra (Lucas9810)



# INTRODUCTION

In this guide, I will show you how to replace a screen on your gameboy advance

## 🔧 TOOLS:

64 Bit Driver Kit (1)  
Spudger (1)

## ⚙️ PARTS:

AGS-001 Screen (1)

### Step 1 — Battery



- Turn your GBA upside down so that the battery compartment is facing up.
- Remove the one Phillips screw holding the battery compartment cover in place.
- Remove the battery compartment cover.

### Step 2 — Battery



- Pry the battery up with your fingernail or Spudger.

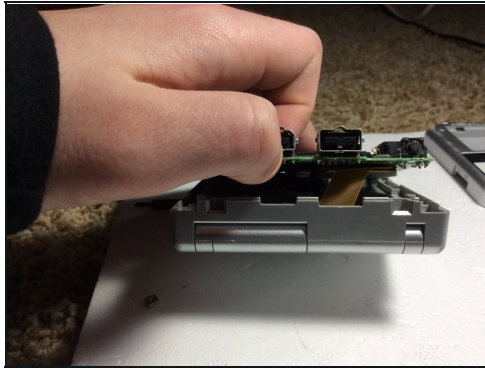
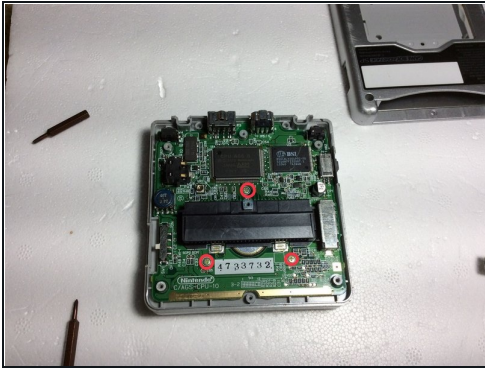


### Step 3 — Lower Case



- Remove the 6 Tripoint screws holding the case together.
- Pry the 2 halves apart. Do not force it though, or you may break your GBA.
- Set the bottom half away for later.
- Be sure not to lose the small, square nut that hold the battery compartment nut in or else you will not be able to screw the battery compartment in.

## Step 4 — Motherboard



- Unscrew the three Phillips screws holding the motherboard to the mid case.
- **WARNING!!!** Do NOT Take the motherboard off yet. It is still Secured with A Ribbon Cable.
- Turn the GBA so that it is like the Third photo.

## Step 5 — Screen ZIF Connector



- Fold the motherboard down like in the first photo. Be sure that the case is **ON TOP** of the motherboard.
- Use a screwdriver or [tweezers](#) to unplug the ZIF Connector from the motherboard.
- Take the Screen ribbon cable out of the motherboard.



## Step 6



- Use a flat-blade screwdriver or the pointed side of a spudger to remove the 5 rubber screw covers.
- Unscrew the 5 tri point screws under the rubber pads.
- Close the GBA and unscrew the single Phillips screw on the bottom.

## Step 7 — Screen



- Open up the GBA and everything should fall apart. Thread the ribbon cable through the opening and lift the screen out of the upper case.
- You are done!!

---

To reassemble your device, follow these instructions in reverse order.

