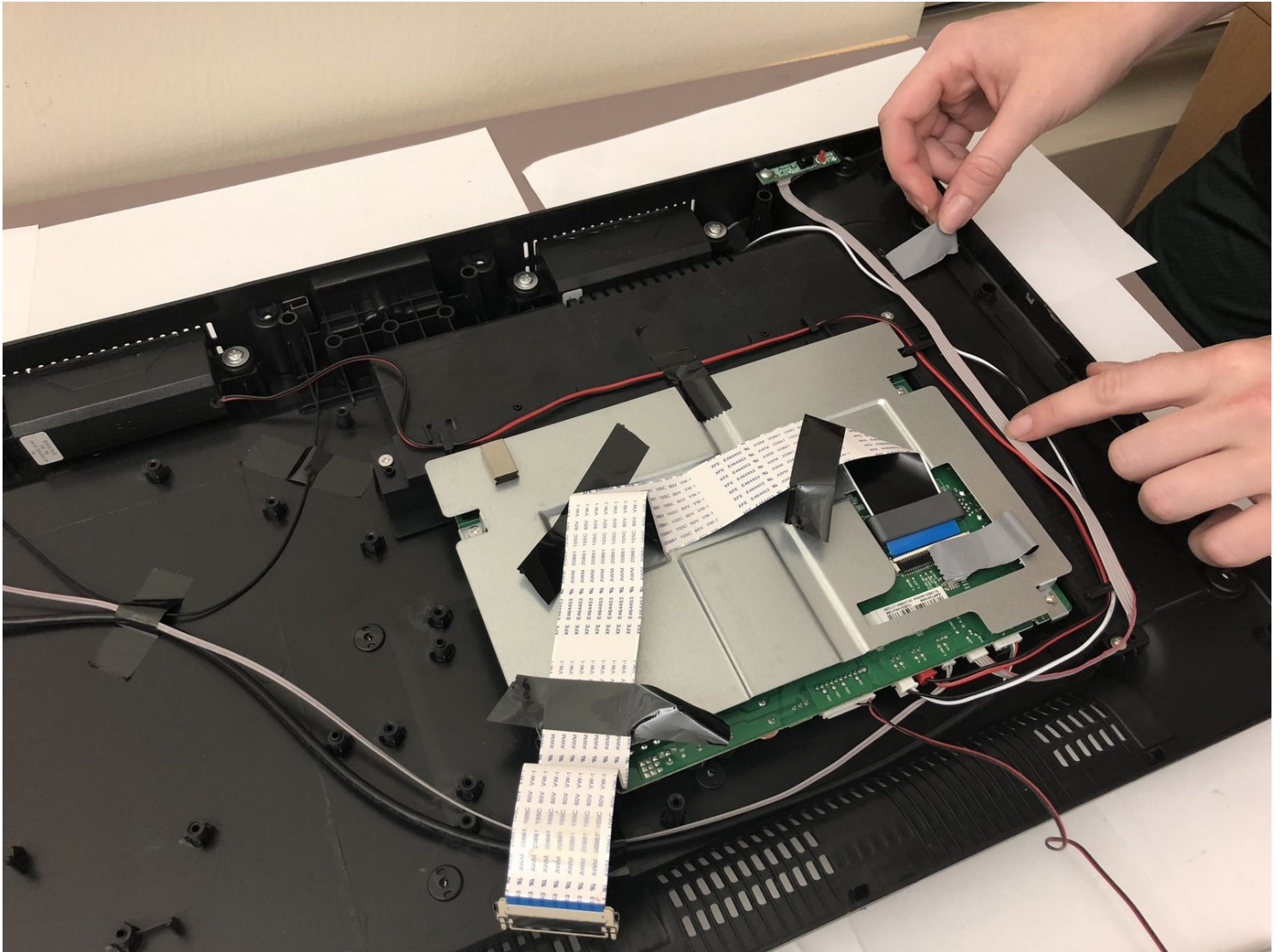




# Insignia NS-24ER310NA17 Motherboard Replacement

This guide shows you how to remove a faulty...

Written By: Maggie Kuntz



# INTRODUCTION

This guide shows you how to remove a faulty motherboard (also known as a main board) from your Insignia NS-24ER310NA17. To replace it, insert a new motherboard by following the directions in reverse order. This should fix display issues such as half the image being black or lines running across the screen.

---

## TOOLS:

[Phillips #00 Screwdriver](#) (1)

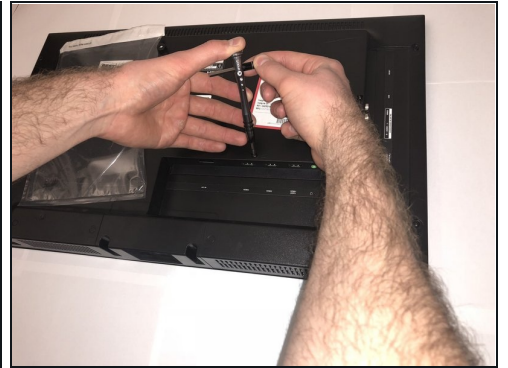
---

### Step 1 — Remove the base



- Rest the TV on its top edge so you have access to the base.
- Use a Phillips #2 screwdriver to take out the four screws on the bottom of the base.
- Remove the base from the frame.

## Step 2



- Lay the TV face down.
- Use the Phillips #00 screwdriver to remove all of the Phillips Head Screws from the the back of the TV.

## Step 3 — Pry the TV open

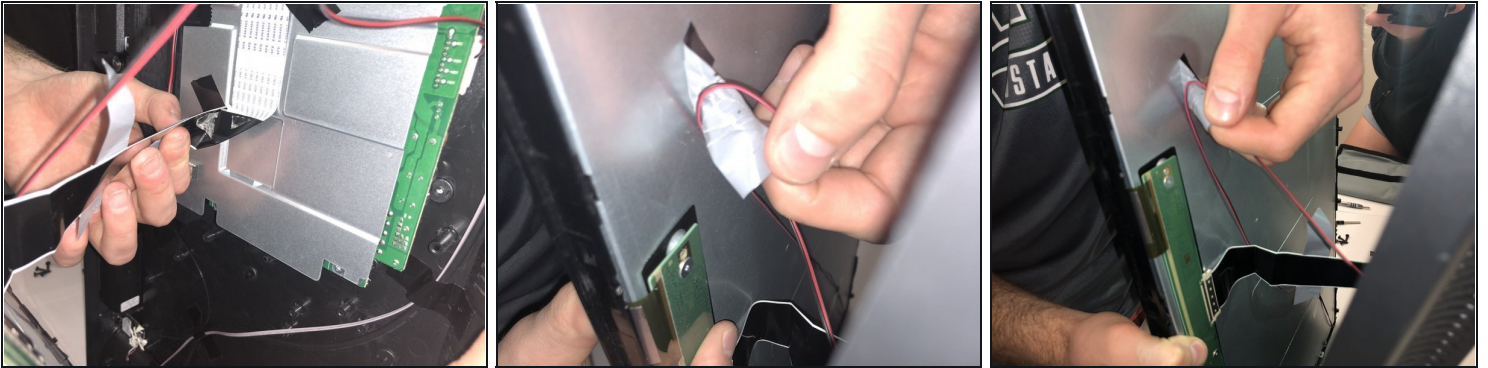


- Stand the TV on its top edge.
- Gently pry apart the front and back of the TV.
- ⓘ The two halves should pull apart easily since there are no longer any screws holding it together.

⚠ The two halves will still be connected by wires and cables that are taped to each side. Do not pull on these. We will remove them in the next step.



## Step 4 — Disconnect wires



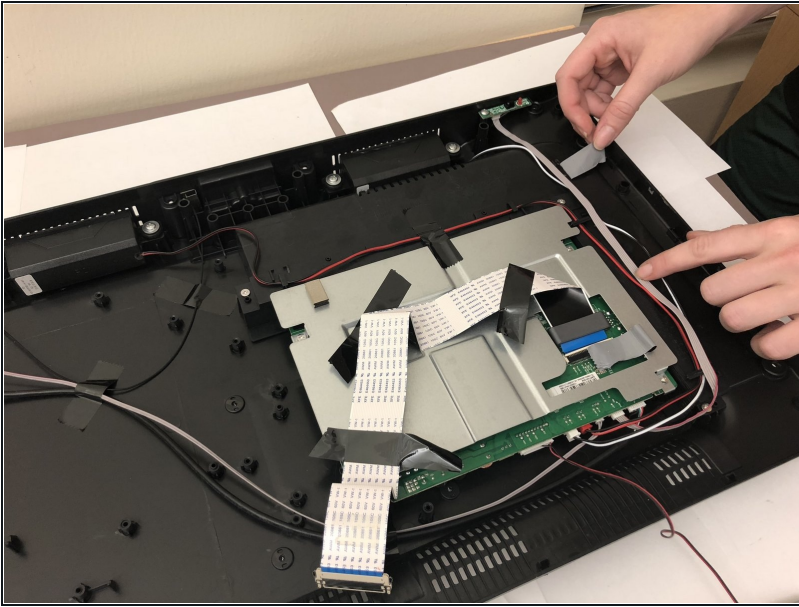
- ① As mentioned in the previous step, there are wires still connecting the two halves.
  - Remove all the pieces of tape to detach the wires from both sides.
  - You want to gently peel the tape off, without pulling on the wires.

## Step 5



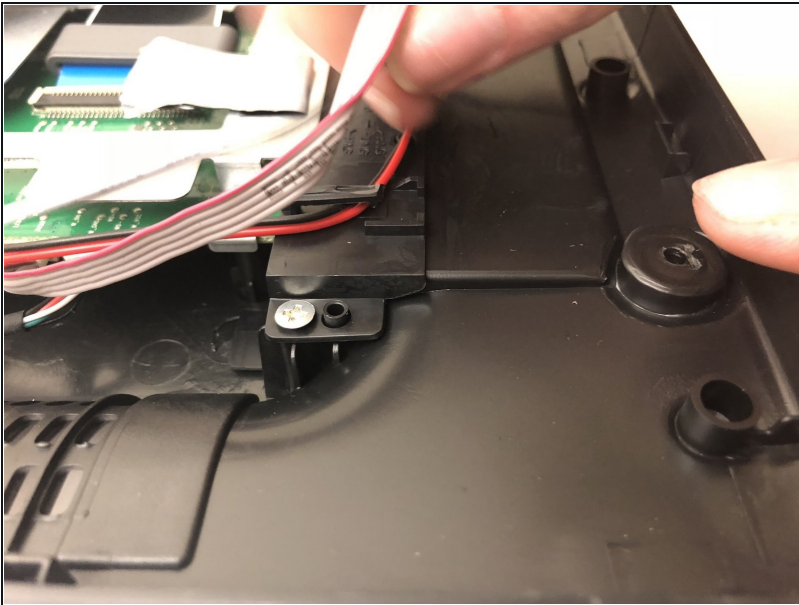
- Spread apart your TV the rest of the way, but do not disconnect any of the wires.
- ① You should have a clear view of the inside on both sides.

## Step 6 — Motherboard



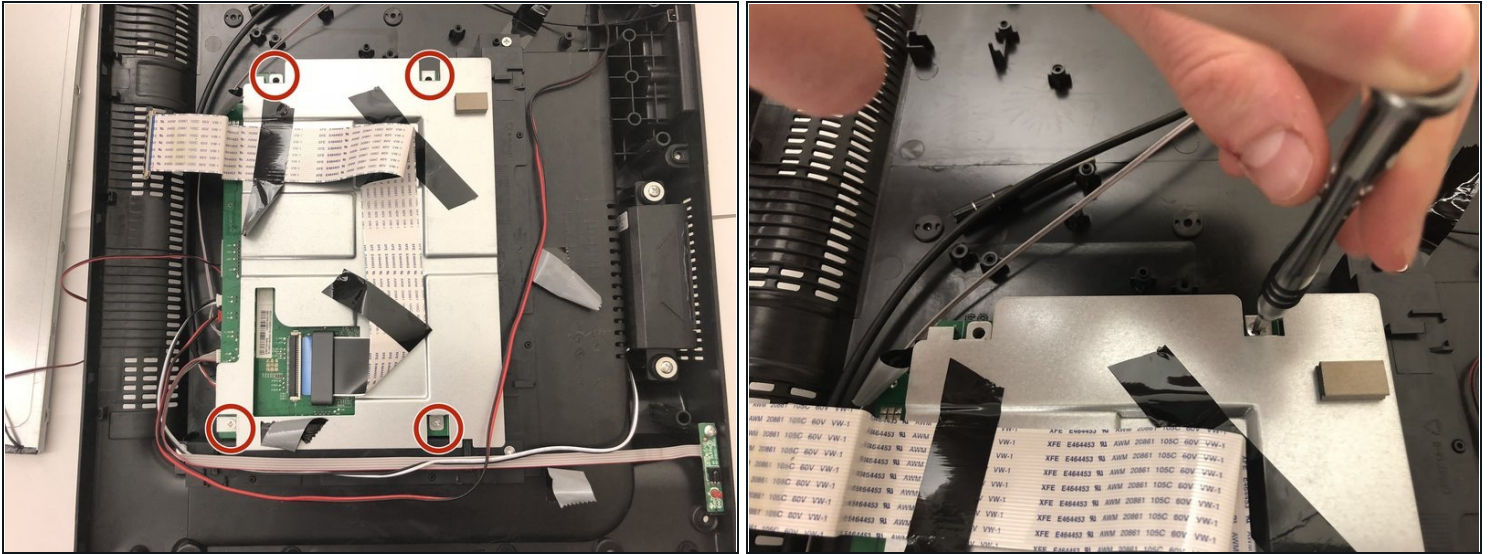
- Remove all strips of tape attached to the silver steel rectangular piece.

## Step 7



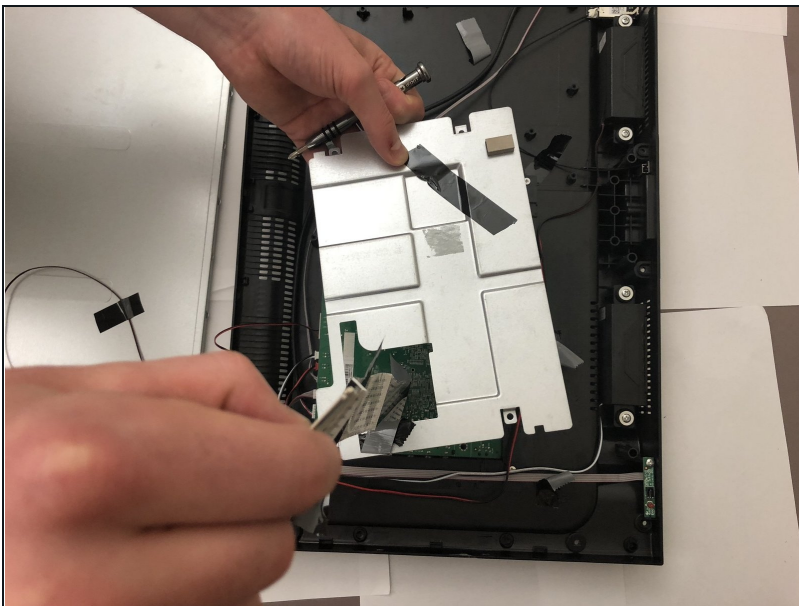
- Pull the red wire out from under the black plastic clip.

## Step 8



- Unscrew the four screws surrounding the steel rectangle with a Phillips 00 Screwdriver.

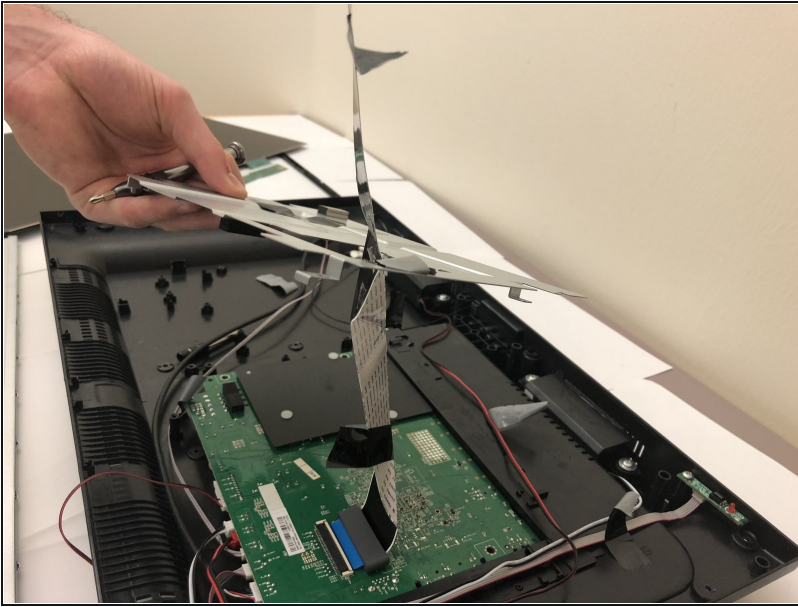
## Step 9



- Carefully lift the rectangular piece.

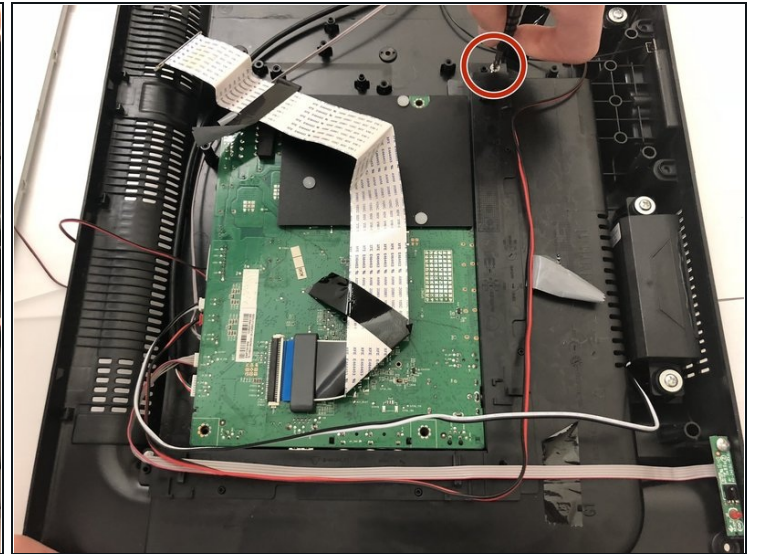
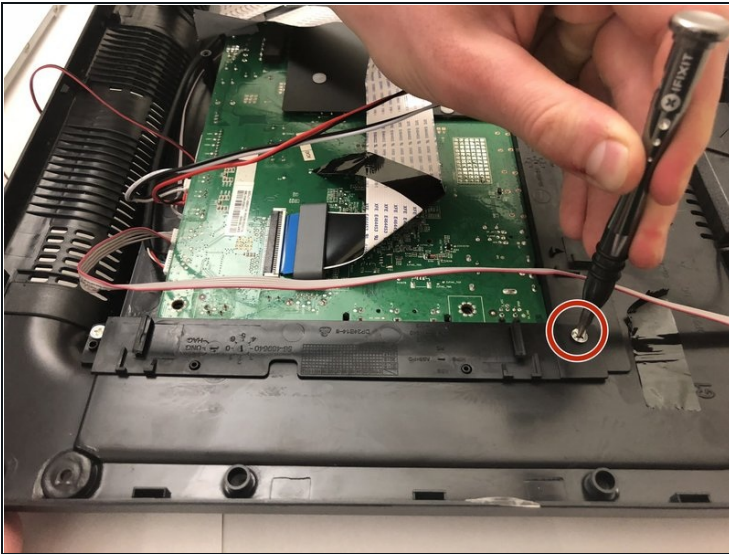


## Step 10



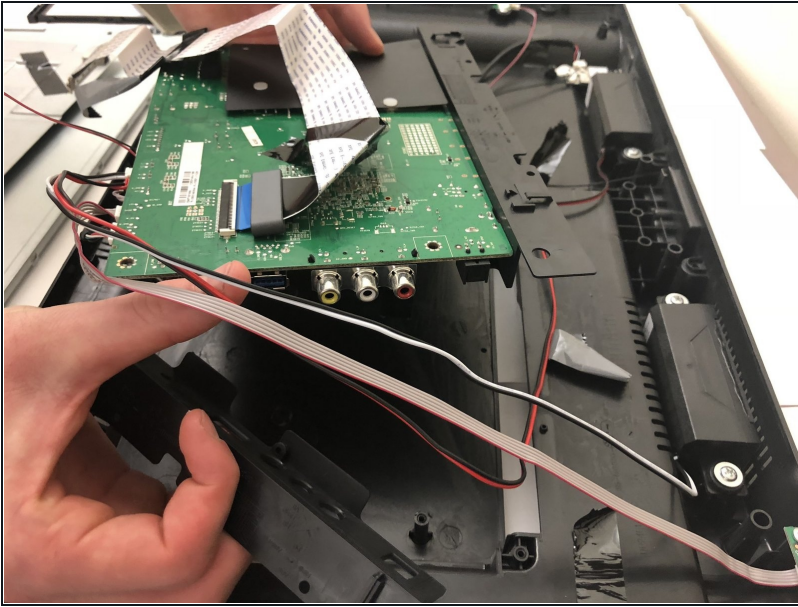
- The rectangular piece will still be attached to the motherboard beneath it with a strip of tape. Remove this strip of tape.

## Step 11



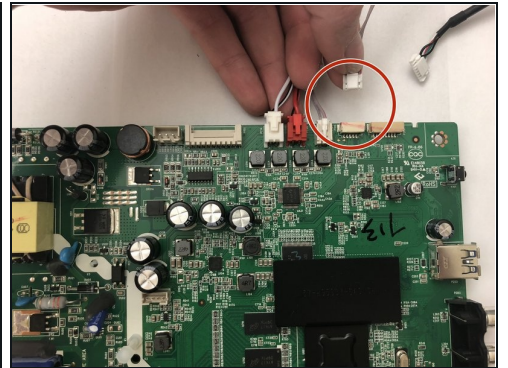
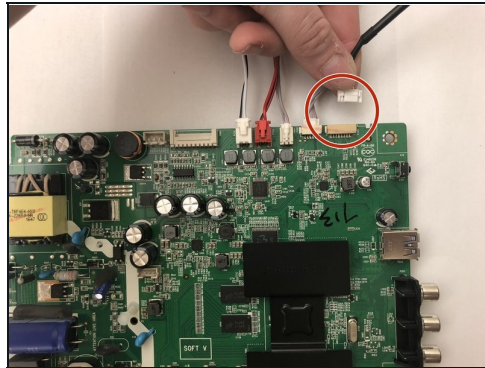
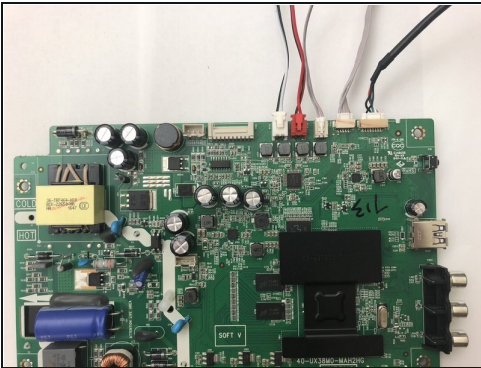
- Use a Phillips #00 screwdriver to remove the two screws on both sides of the motherboard.

## Step 12



- Carefully lift the motherboard away from the television.
- ⚠ Keep in mind that the motherboard is still attached by several thin wires and should not be tugged.

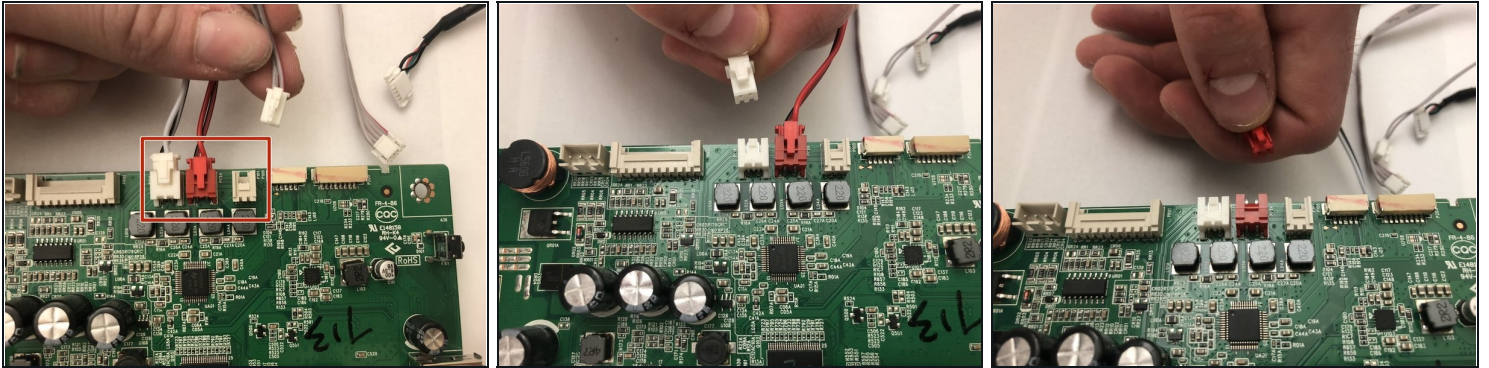
## Step 13



- There are 5 wires attached to the motherboard. Remove the two thicker white wires to the right of the red wire.



## Step 14



- Remove the remaining three wires from the mainboard.

## Step 15



- Carefully remove the mainboard from the television.
- You have now successfully removed the mainboard.

---

To reassemble your device, follow these instructions in reverse order.