



# LG V30 Rear Camera Replacement

In this video, I will show you how to replace...

Written By: Witrigs



# INTRODUCTION

[video: <https://www.youtube.com/watch?v=oCIpVo3vMQw&t=14s>]

In this video, I will show you how to replace LG V30 standard or wide-angle back camera.

This guide will show you how to replace both the standard and wide-angle rear cameras in the LG V30 smartphone. If your rear cameras are producing blurry or glitchy photos, or if your cameras are failing to function at all, replacing them should alleviate your issues.

## 🔧 TOOLS:

Heat Gun (1)  
Plastic Cards (1)  
Phillips #000 Screwdriver (1)  
Tweezers (1)  
Spudger (1)  
Suction Handle (1)  
SIM Card Eject Tool (1)

## ⚙️ PARTS:

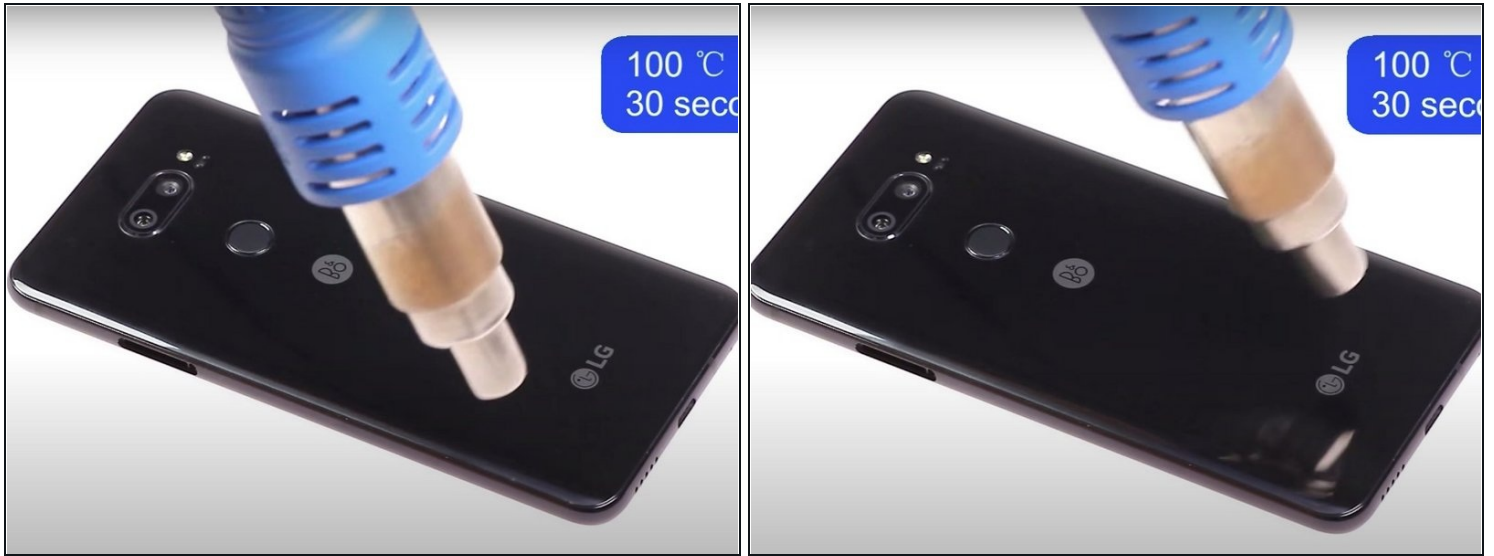
OEM Standard camera for LG V30 (1)  
OEM wide-angle camera for LG V30 (1)

## Step 1 — Rear Camera



- Insert a SIM card eject tool into the small hole on the right side of the phone to release the SIM card tray from the phone.
- Pull the SIM card tray out from the phone.

## Step 2



- Use a heat gun to apply heat to the back cover.

## Step 3



- Use a suction cup to lift up the back cover up.
- Insert the edge of a [plastic card](#) into the space created between the cover and frame.

## Step 4



- Insert a second card where you have created an opening with the first card and slide it along the bottom edge of the phone.

## Step 5



- Continue to slide the cards around the remaining three edges to release the adhesive.

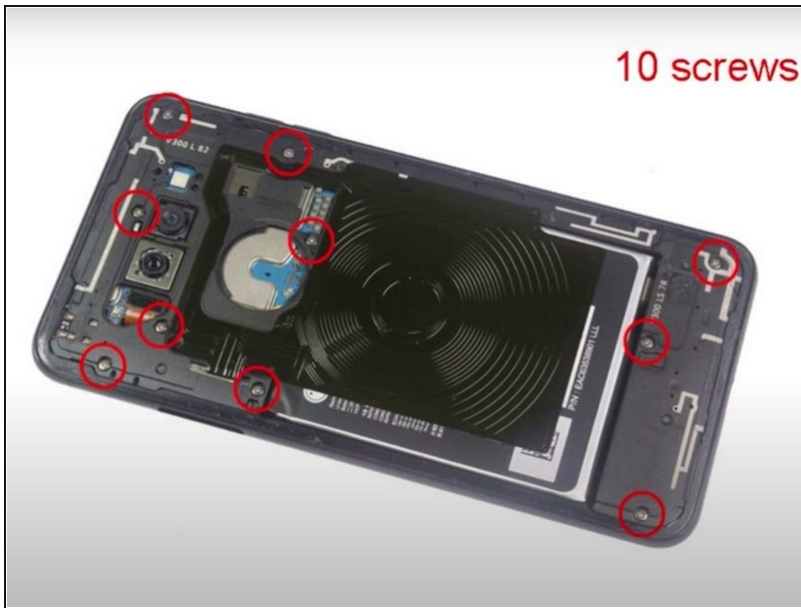
## Step 6



- Remove the back cover.



## Step 7



- Remove the ten Phillips #000 screws from the midframe.

## Step 8



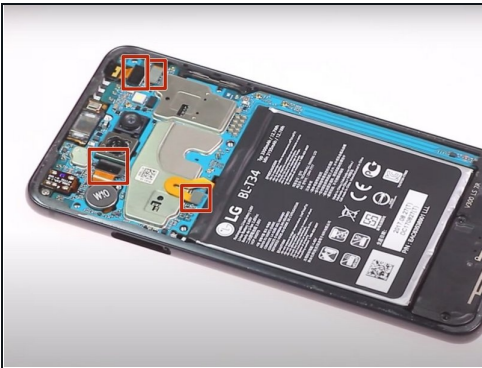
- Using a plastic spudger, pry up the midframe of the phone.

## Step 9



- Remove the midframe.

## Step 10



- Use the plastic spudger to pry up the four press fit connectors on the top portion of the motherboard.

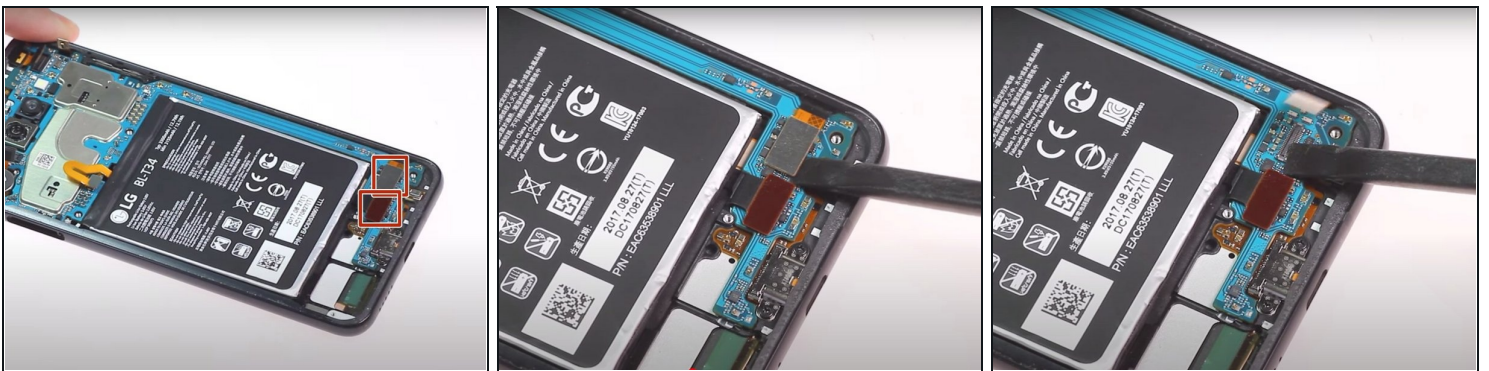


## Step 11



- Pry up the speaker panel with a plastic spudger and remove it from the phone.

## Step 12



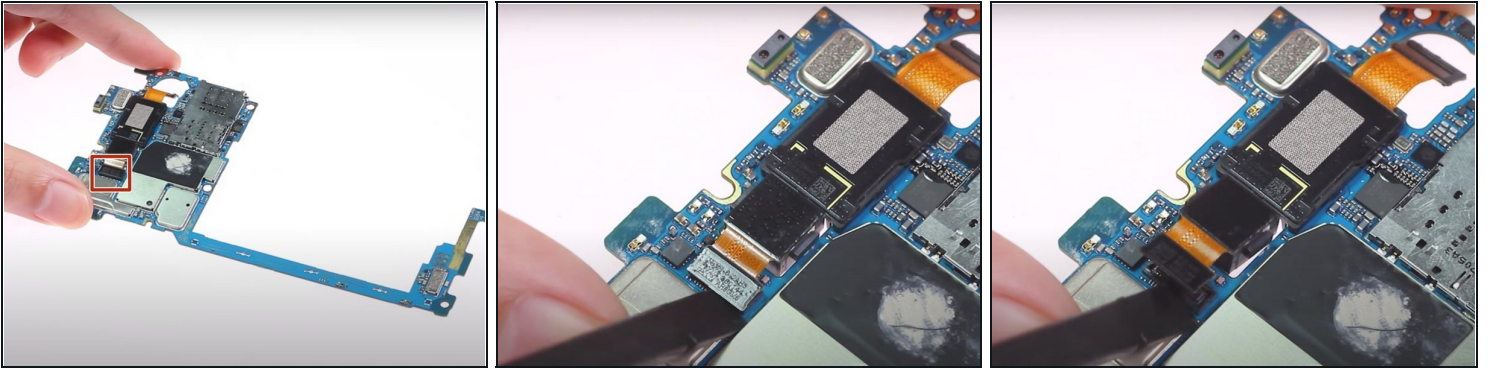
- Use a spudger to pry up the two press fit connectors on the bottom portion of the midframe.

## Step 13



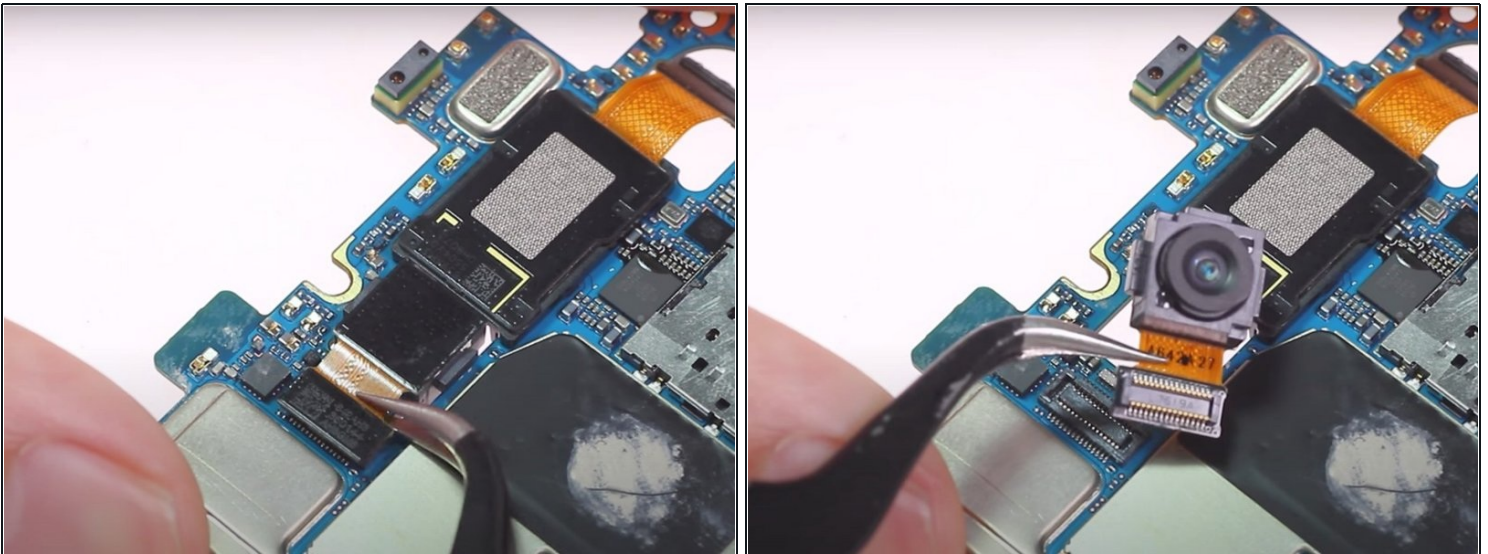
- Use a spudger to pry up the motherboard and lift it out of the phone's frame.

## Step 14



- Flip over the motherboard.
- Using a plastic spudger, pry up the press fit connector for the first camera.

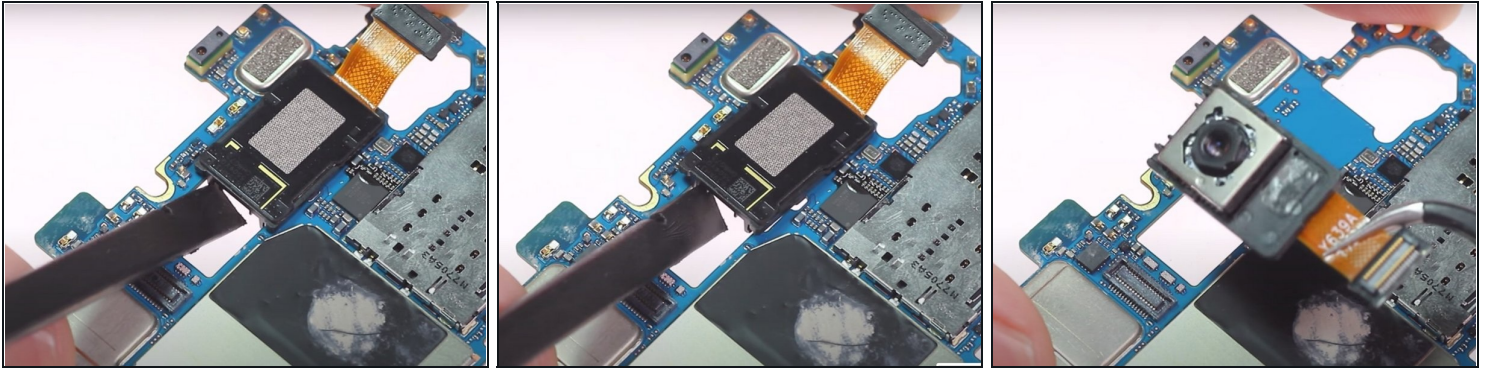
## Step 15



- Remove the camera with a pair of ESD safe tweezers.



## Step 16



- Pry up the second camera with a spudger.
  - ① The press fit connector has already been disconnected, but the camera module is still lightly adhered to the motherboard.
- Remove the second camera with a pair of tweezers.

---

To reassemble your device, follow these instructions in reverse order.