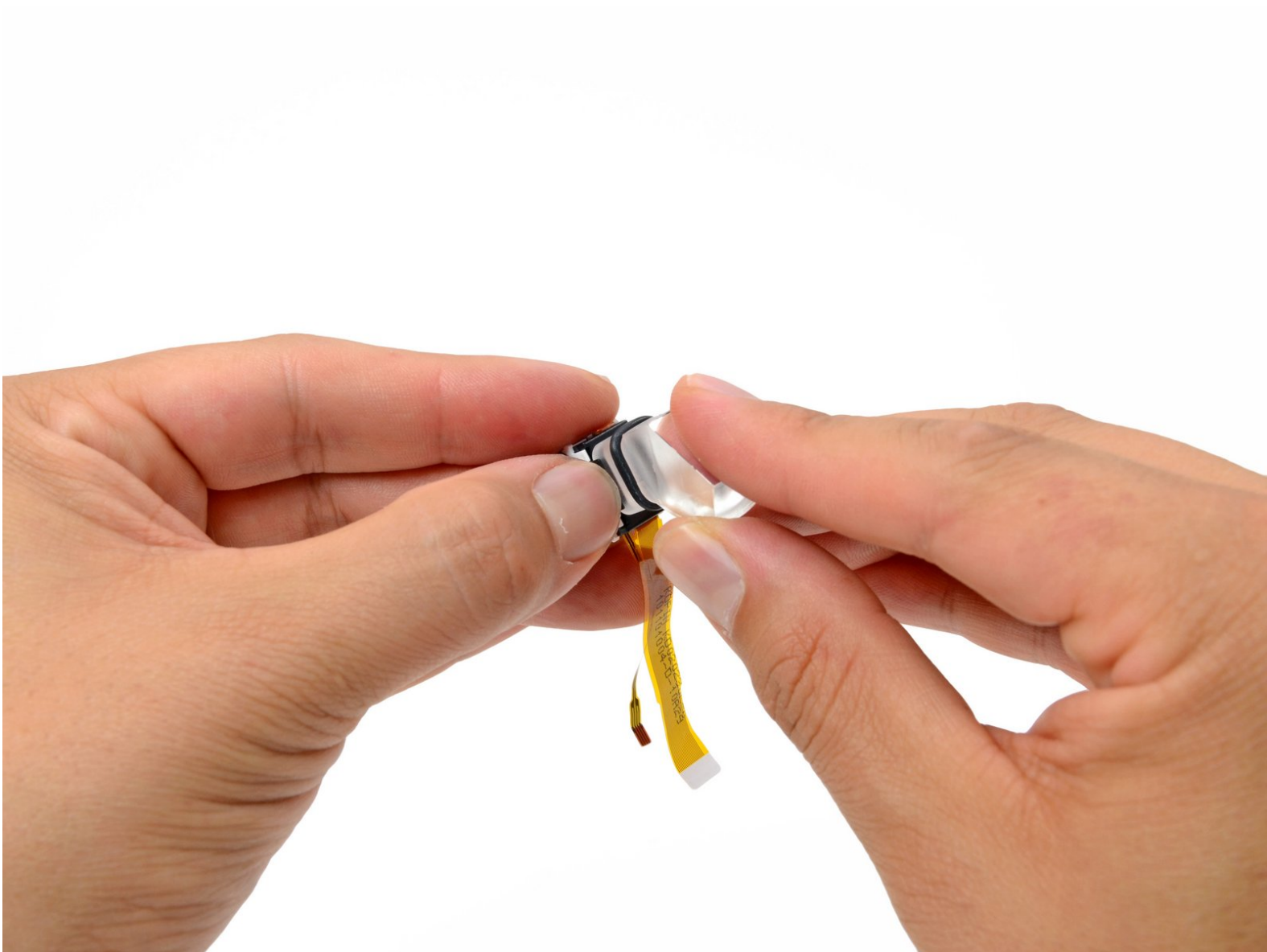




# Zeal Optics iON LCD Assembly Replacement

Zeal Optics iON LCD assembly prerequisite.

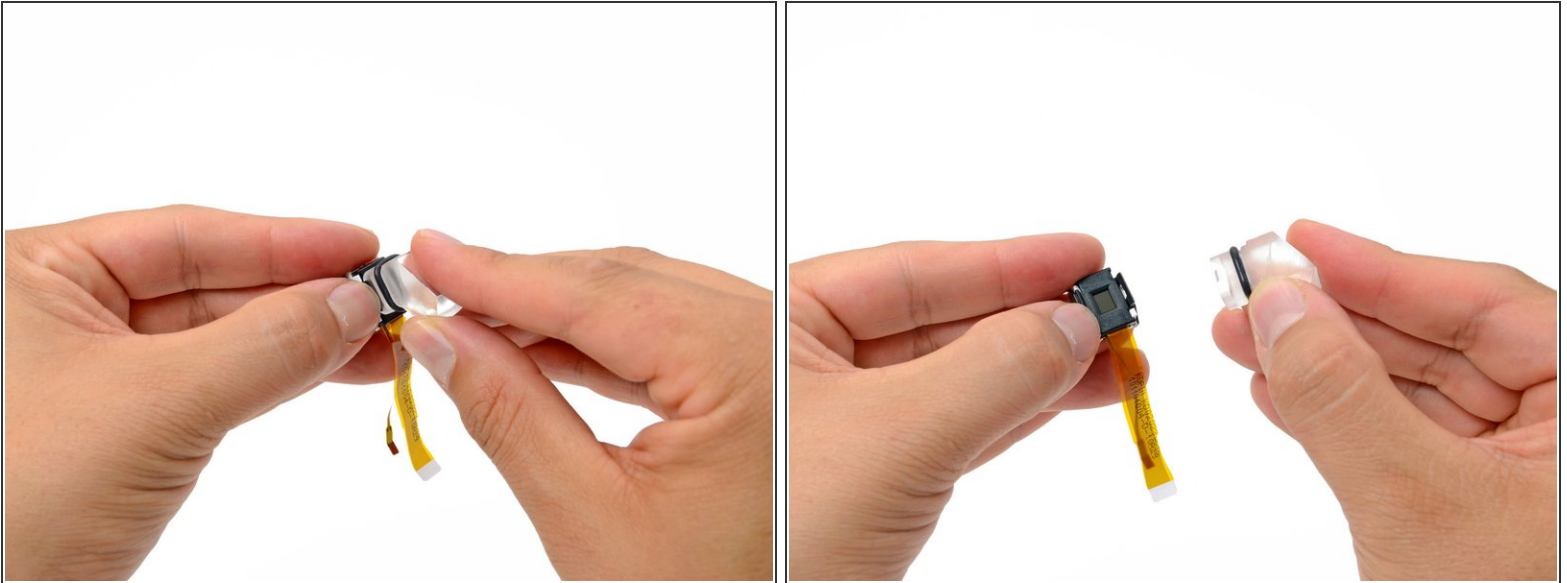
Written By: Eric Flores



# INTRODUCTION

This guide is a prerequisite to replacing the different components of the LCD assembly.

## Step 1 — LCD Assembly



- Use your thumbs to lift the tabs holding the viewfinder lens to the LCD assembly.
- Pull the viewfinder lens off of the viewfinder LCD.

To reassemble your device, follow these instructions in reverse order.