



Toshiba Satellite M35X-S149 HDD Replacement

This guide will show how to replace the HDD.

Written By: Aiden Baker

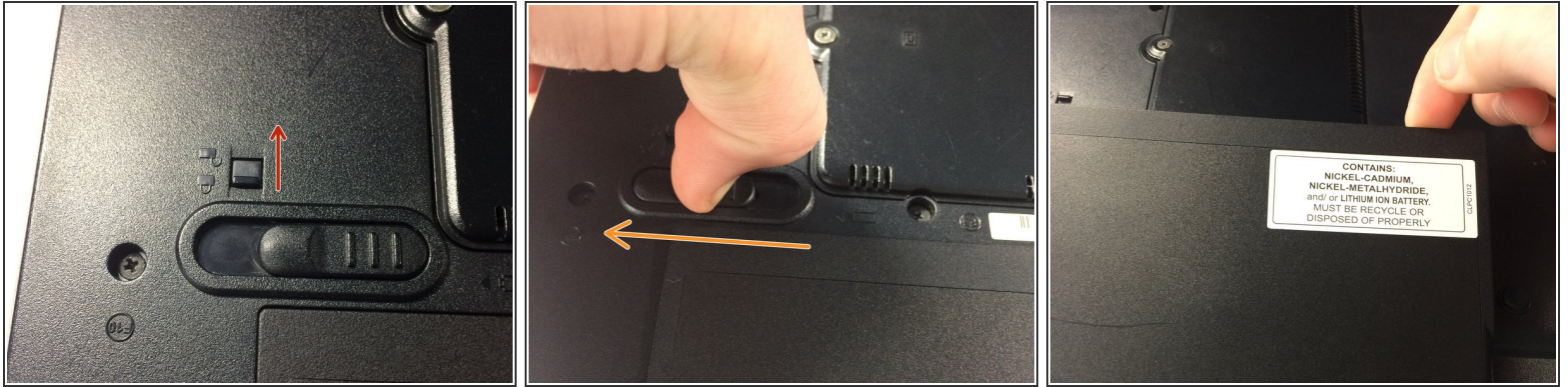




TOOLS:

- [Phillips #1 Screwdriver](#) (1)
-

Step 1 — Battery



- Slide the lock slider into the unlocked position.
- Slide the battery release.
- While holding the slider, remove the battery.

Step 2 — HDD



- Remove 1 PH1 Philips screw.
- Remove the HDD.

To reassemble your device, follow these instructions in reverse order.

This document was generated on 2021-01-17 02:19:18 PM (MST).

