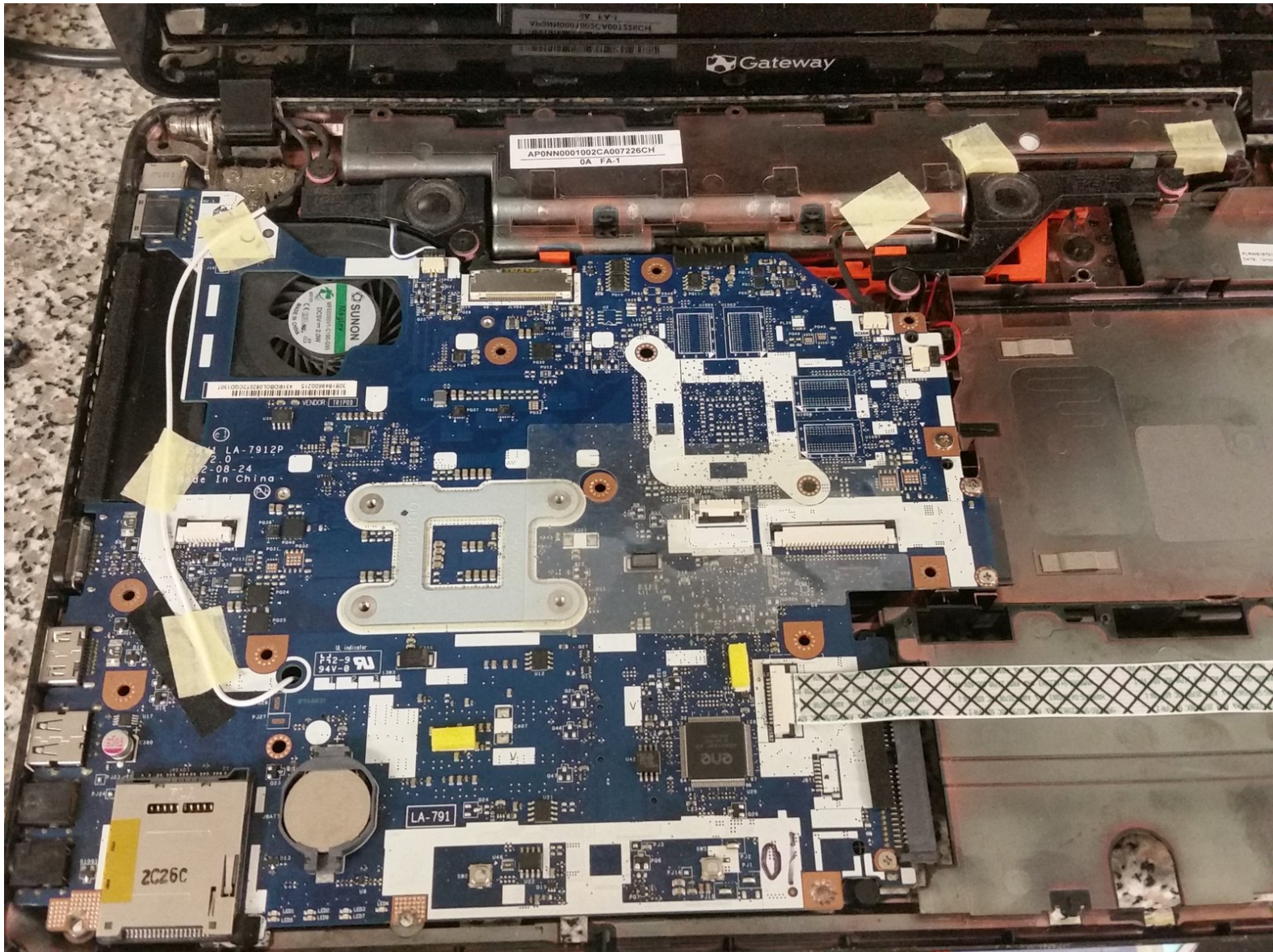




# Gateway NE56R Series Disassembly

Written By: Joseph Sctbunio



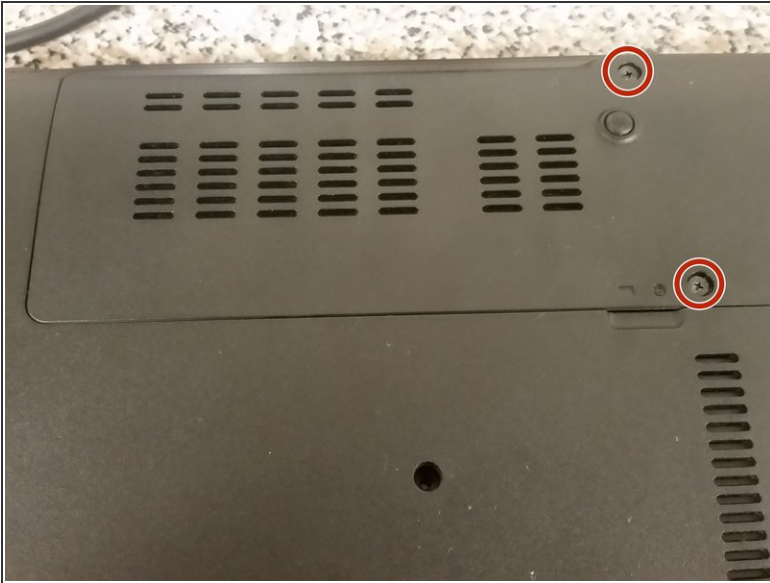


## TOOLS:

- [Phillips #00 Screwdriver](#) (1)
- [Phillips #1 Screwdriver](#) (1)
- [Spudger](#) (1)



## Step 1 — Remove hard drive cover



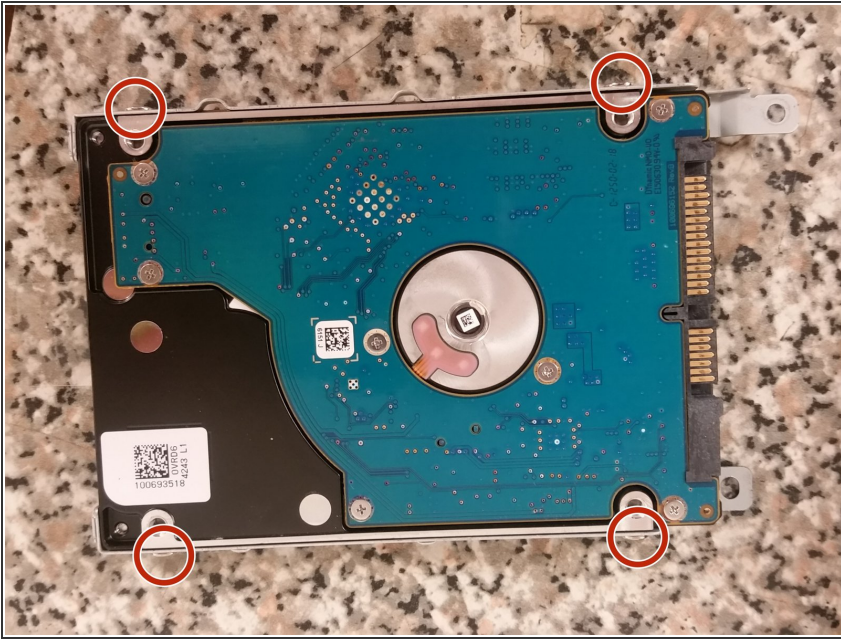
- Remove the two Philips screws securing the hard drive cover to the base.
- Pry the hard drive cover off with a spudger.

## Step 2 — Remove hard drive caddy



- With the laptop's battery side facing you, pull the hard drive caddy's tab to the right.

### Step 3 — Remove hard drive



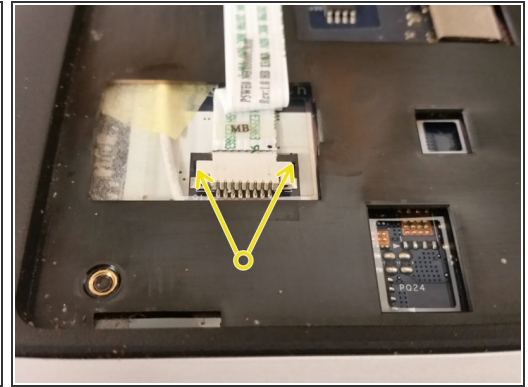
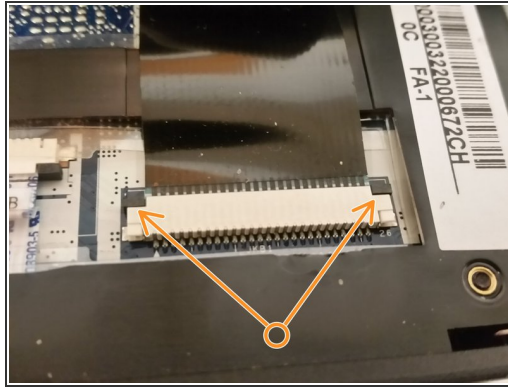
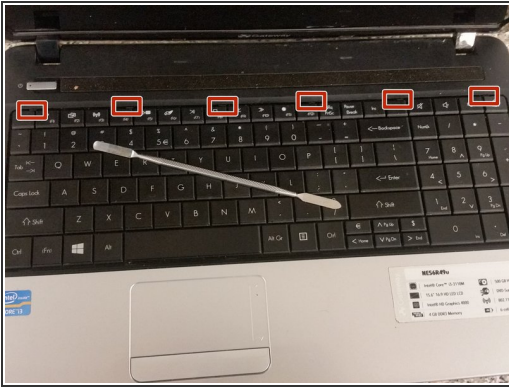
- i** This step is unnecessary if you are only taking the hard drive out for testing purposes or are removing the motherboard.
- Remove the four screws securing the hard drive to the caddy.

### Step 4 — Remove RAM



- Push the clips away from each other that are holding the RAM sticks. The RAM will then pop upwards. At this point, you can pull the stick out. Repeat for the second stick if applicable.

## Step 5 — Remove keyboard

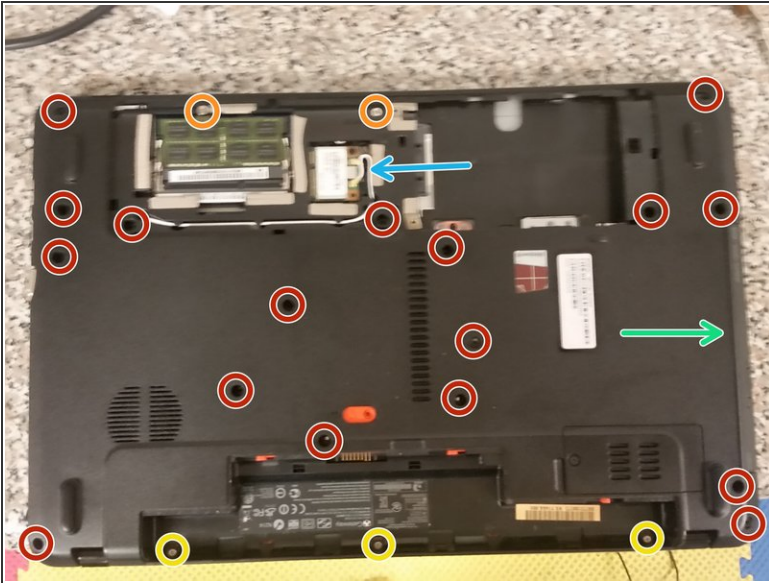


**i** The keyboard has no screws to remove.

- Use a fine spudger to push all six keyboard tabs. On the first, you'll have to use a bit of prying to get under the keyboard. After that, get your fingernail under the keyboard, and pull gently as you go along the keyboard using the spudger to pop the other clips.
- i** There is one un-pushable clip on each side of the keyboard. Don't try to push them. Instead, once you get the top of the keyboard up, pull the keyboard out of the clips.
- Gently push each side of the locking connector's lock towards the screen, and then pull the now-loose keyboard cable out. Set the keyboard aside.
- Gently push each side of the power button locking connector towards the screen, and then pull the cable out.

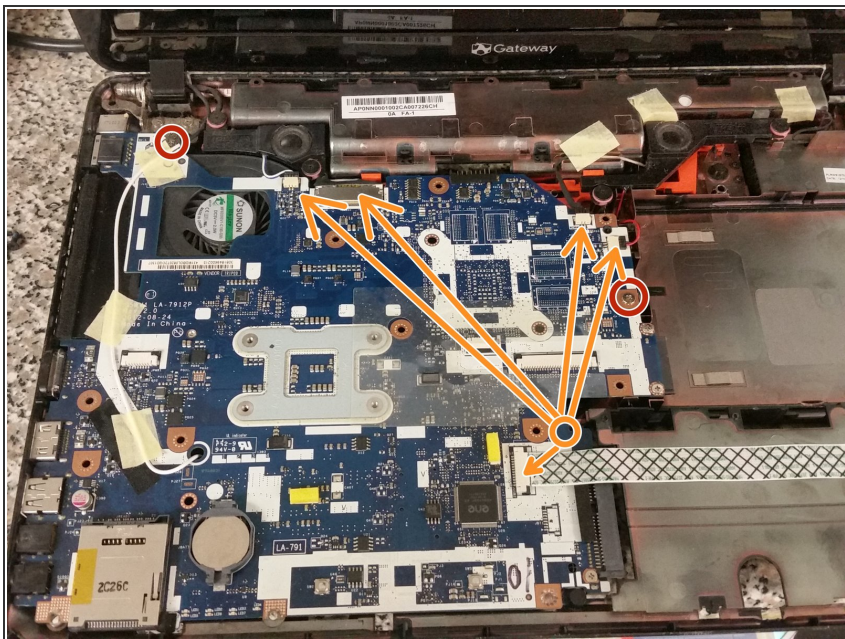


## Step 6 — Remove palmrest



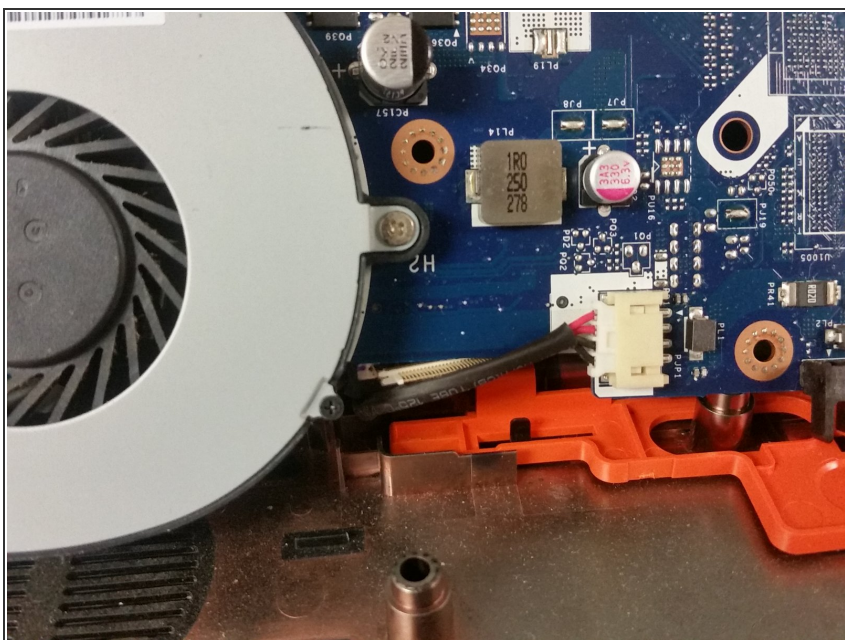
- Flip the laptop over again.
- Remove the seventeen Philips M2.5x8 screws securing the palmrest.
- Remove the two silver Philips M2.5x6 screws securing the palmrest.
- Break out the Philips #0 bit, and remove the three silver Philips M2 screws securing the palmrest.
- Use a spudger to separate the palmrest from the base.
- Slide the optical drive out.
- Remove the wireless antenna connectors, and then the wireless card.

## Step 7 — Remove motherboard



- Back with the Philips #1 bit, remove the two silver M2.5x6 Philips screws.
- Remove all cables from the motherboard, including pulling out the wireless antenna from its hole.
- Flip the motherboard up. The DC jack is still connected to the board, so don't tug the board away just yet.

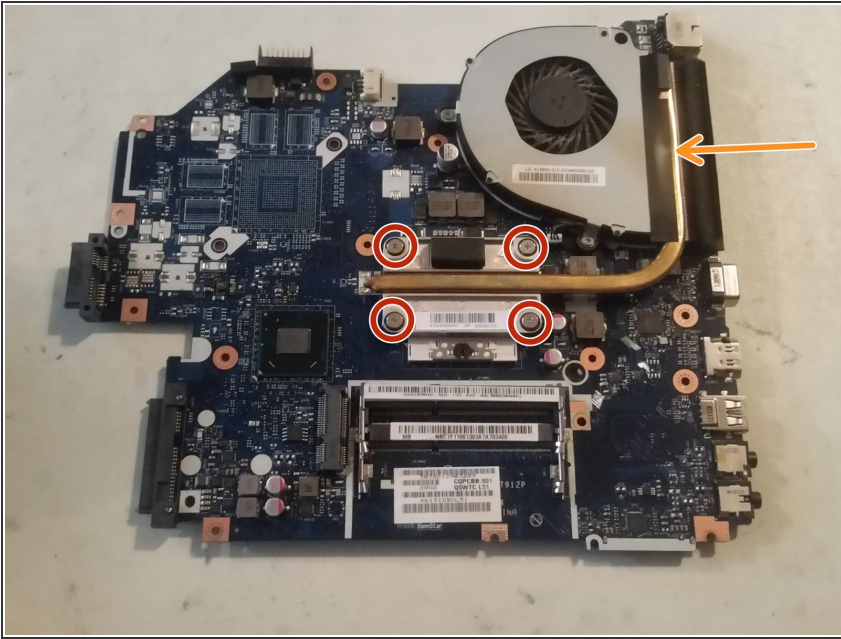
## Step 8 — Unplug the DC jack



- Pull back on the DC jack plug to remove it. Now you may remove the motherboard and put the rest of the laptop aside.

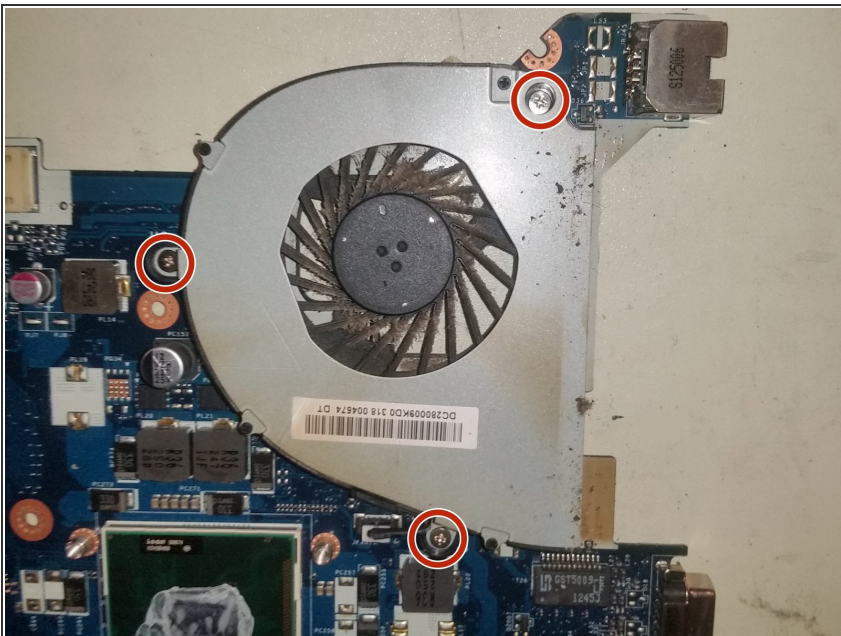


## Step 9 — Remove heatsink



- Remove the four screws securing the heatsink to the motherboard.
- Remove the black tape securing the heatsink to the fan, and now the heatsink will be free.

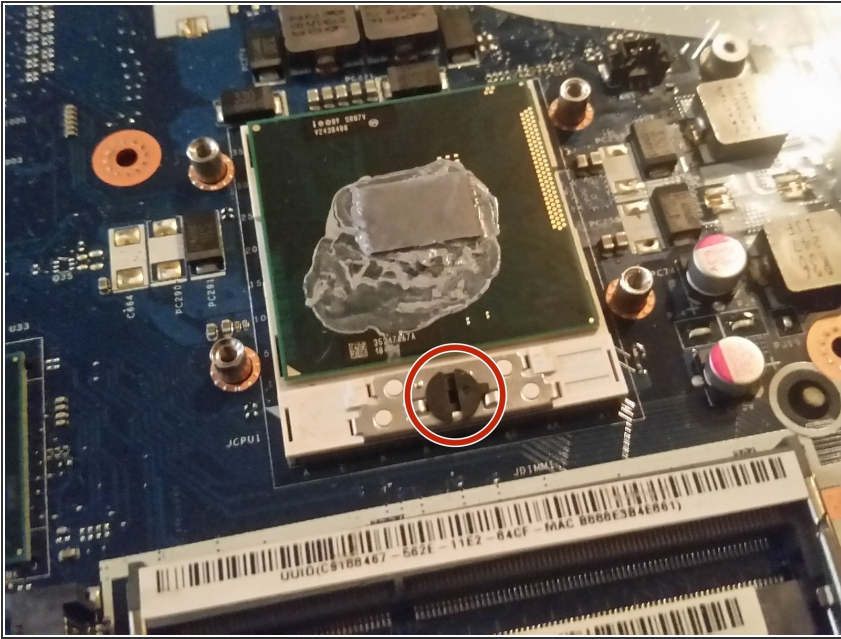
## Step 10 — Remove fan



- Remove the three screws securing the fan to the motherboard.
- Remove the fan connector from the motherboard, and then remove the fan.

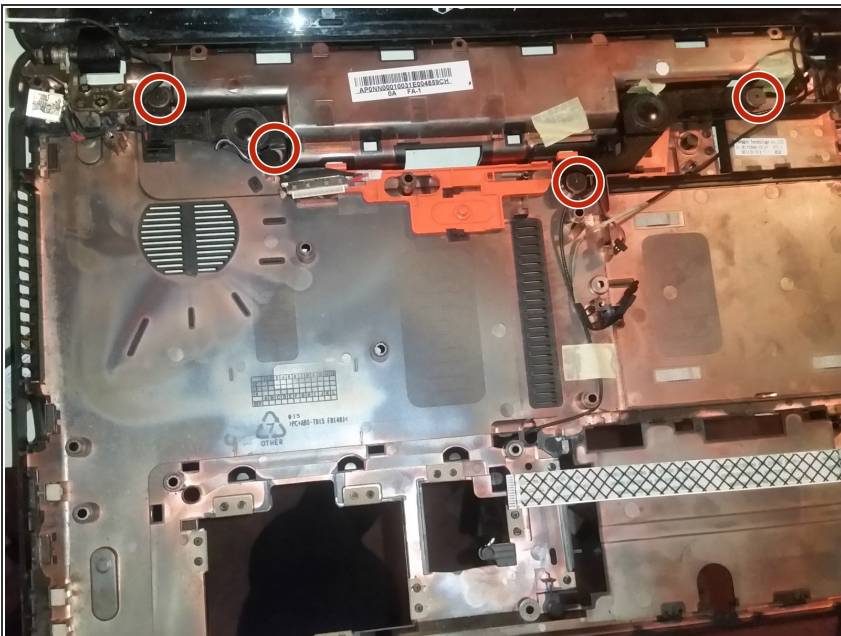


## Step 11 — Remove CPU



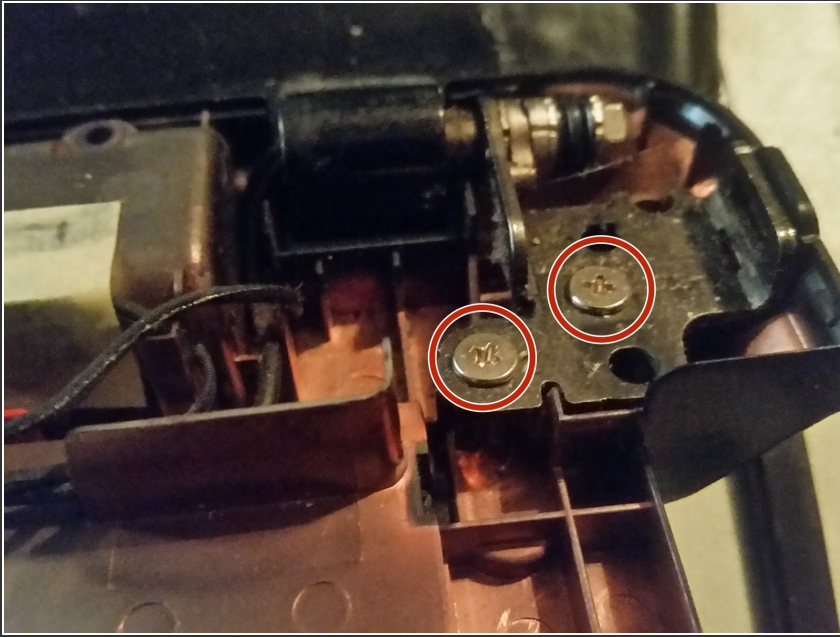
- Turn the CPU socket screw counterclockwise to release the CPU, and lift the CPU out of the socket.

## Step 12 — Remove speakers



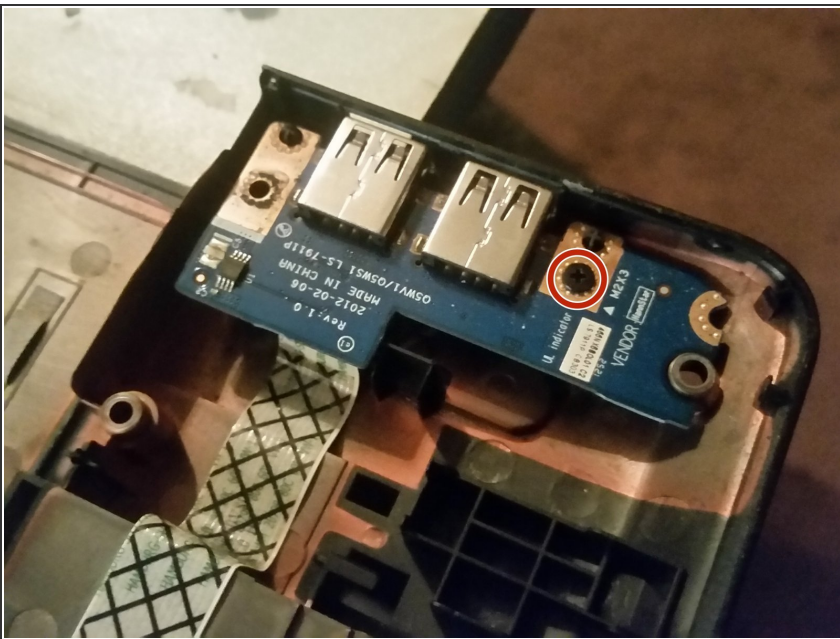
- Remove each of the screws securing the left and right speakers, and remove the speakers.

## Step 13 — Remove LCD assembly



- Remove each of the screws securing the hinges to the base, and then lift the assembly upwards to remove it.

## Step 14 — Remove DC jack & USB port board



- At this point, you may simply pull upwards on the DC jack to remove it.
- The USB port board is secured by a single M2x3 Philips screw. You may remove this screw and pull the board by its cable upwards.
- ⓘ The cable is attached to the base with adhesive.

To reassemble your device, follow these instructions in reverse order.