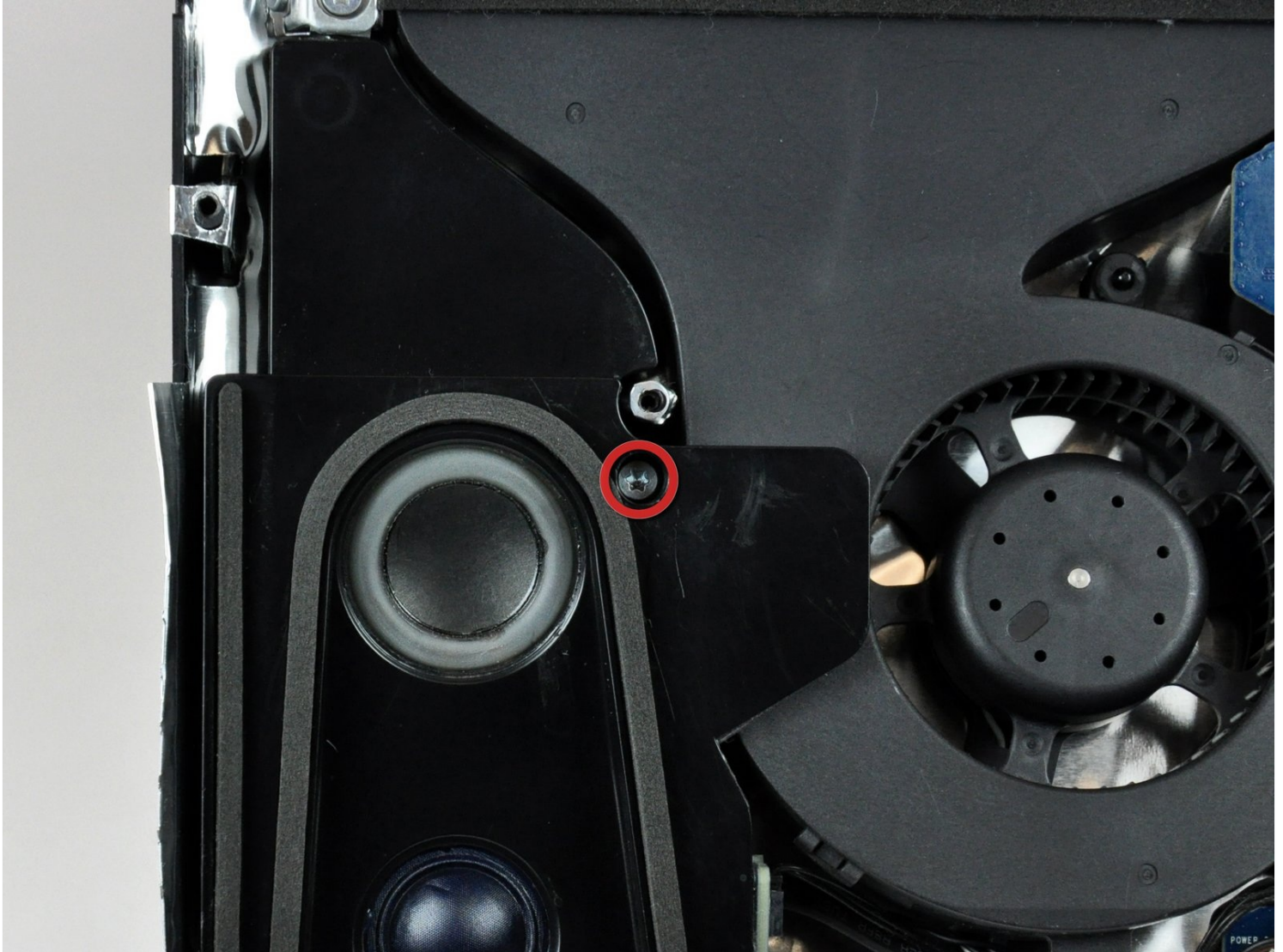




iMac Intel 20" EMC 2133 and 2210 CPU Fan Replacement

Keep your CPU running cool by replacing the CPU...

Written By: Walter Galan



INTRODUCTION

Keep your CPU running cool by replacing the CPU Fan.

TOOLS:

Heavy-Duty Suction Cups (Pair) (1)
Phillips #1 Screwdriver (1)
Spudger (1)
TR10 Torx Security Screwdriver (1)
T6 Torx Screwdriver (1)
TR8 Torx Security Screwdriver (1)

PARTS:

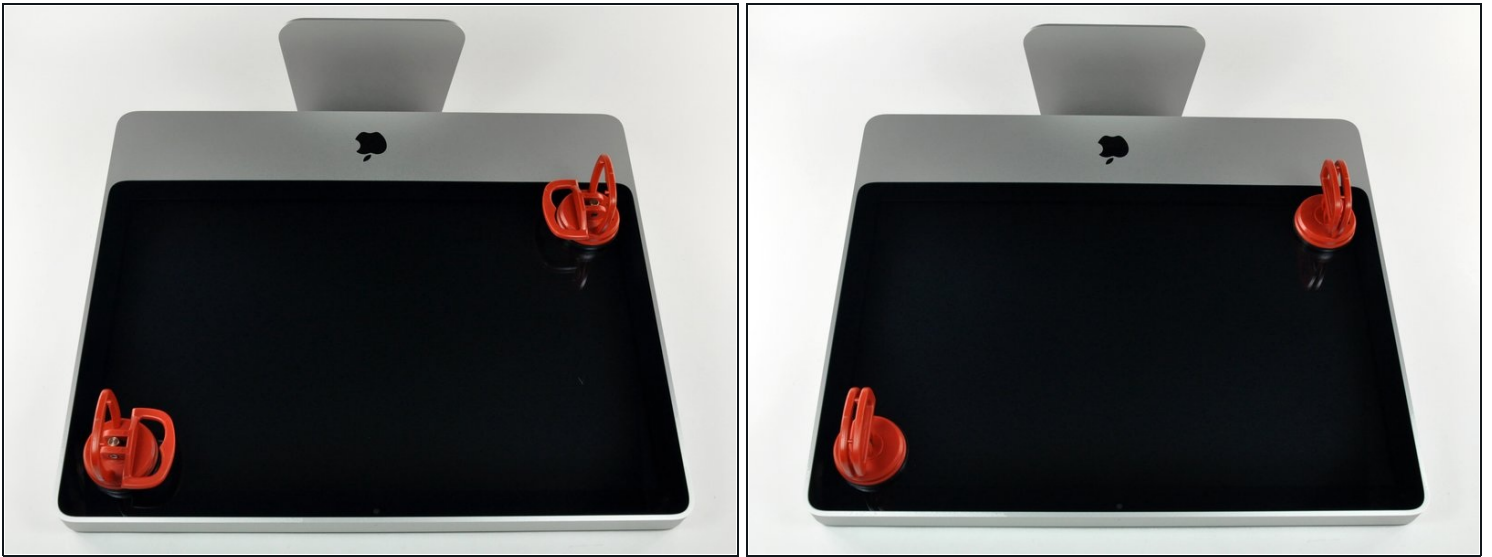
iMac Intel 20" EMC 2210 & 2133 CPU Fan (1)

Step 1 — Access Door



- Loosen the single Phillips screw in the center of the access door.
- ⓘ This screw is captive in the access door.
- Remove the access door from your iMac.

Step 2 — Glass Panel



- ① The glass panel is fixed onto the front bezel with fourteen magnets around its perimeter.
- Stick two suction cups to opposing corners of the glass panel.
- ① To attach the [suction cups](#) we sell, first position the suction cup with the movable handle parallel to the face of the glass panel. While lightly holding the suction cup against the glass, raise the movable handle until it is parallel with the other handle.
- ① If your suction cups refuse to stick, try cleaning both the glass panel and the suction cup with a mild solvent such as Windex.

Step 3



- Gently pull the glass panel straight up off the iMac.

⚠ The glass panel has several positioning pins around its perimeter. To avoid shearing these pins off the glass panel, be sure to only pull straight up during removal.

- ★ Be meticulous about cleaning the LCD and the inside face of the glass panel before reinstallation, as any fingerprints or dust trapped inside will be annoyingly visible when the display is on. Placing the glass flat, inside face down, on a fresh aluminum-foil surface is a good way to keep it clean.

Step 4 — Front Bezel



- Remove the following 12 screws securing the front bezel to the rear case:
 - Eight 13 mm T8 Torx.
 - Four 25 mm T8 Torx.

Step 5



- Place your hands at the top corners of the bezel (to the side) and lift the bezel 2-3cm from the body by working from the top. After this you can also disengage the bottom of the bezel (the memory modules will prevent the bottom of the bezel to detach first). When reassembling, start with the bottom of the bezel.

⚠ The top of the bezel hosts a microphone attached to the logic board. Gently lift the bezel to not damage the microphone wiring or connector by accidentally pulling the cable.

- ① At this point, you can either detach the microphone cable and remove the bezel, or keep the microphone cable attached and rest the bezel on your work surface or the chassis of the Mac.
- **To fully detach the bezel:** disconnect the microphone cable connector, removing tape as necessary.
- **To keep it attached,** leave the microphone cable attached to the logic board, and place the bezel 'above' the chassis, with the microphone cable forming a hinge.

⚠ If you keep the microphone attached to the chassis, make sure you don't accidentally damage the microphone or logic board by bumping into the loose bezel.

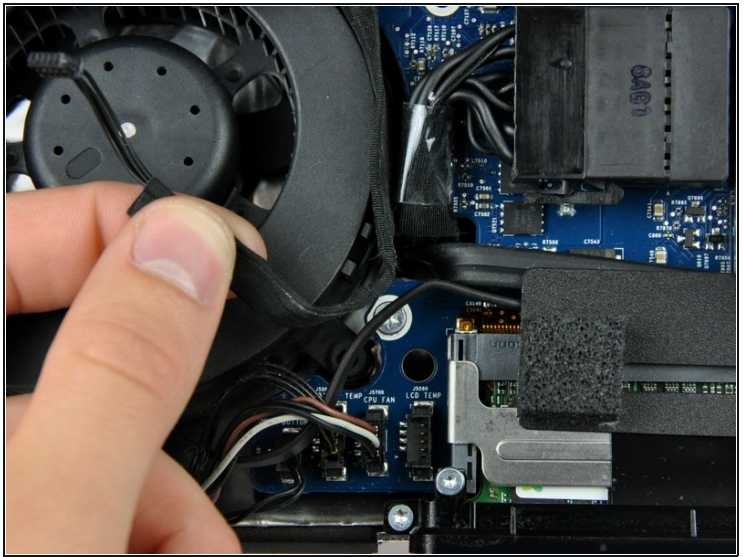
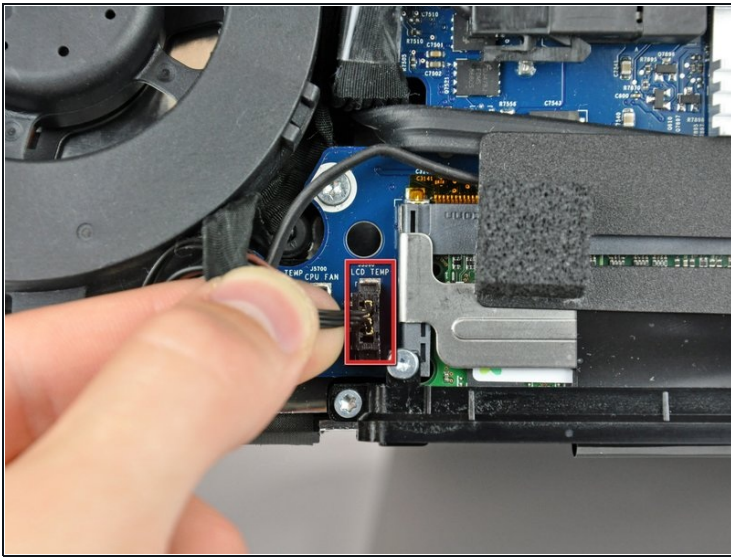
Step 6



★ When reassembling the bezel:

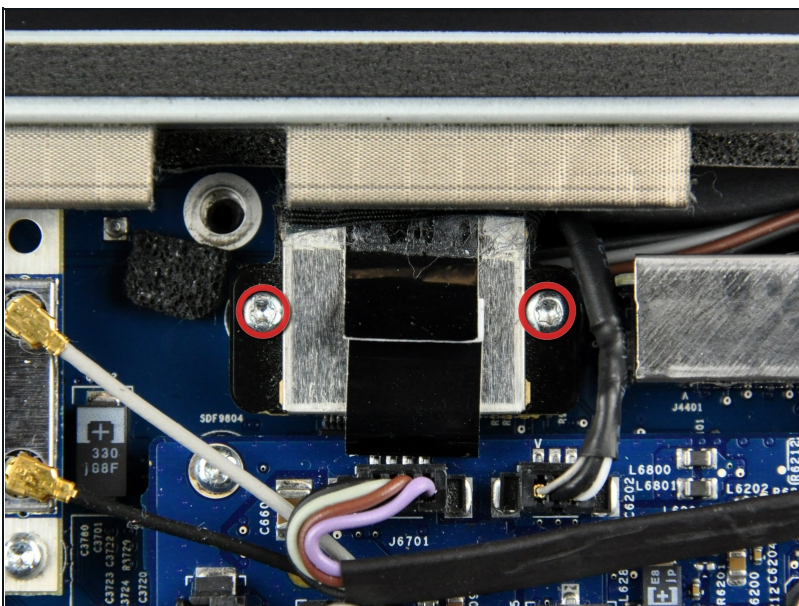
- be sure to tuck the microphone cable and connector into the void next to the camera board.
- Gently guide the microphone connector and cables through the ± 1 in long slot at the right of the iSight camera. Once the bezel is properly assembled, gently push the microphone connector and cable into the bezel through that slot.

Step 7 — Display Panel



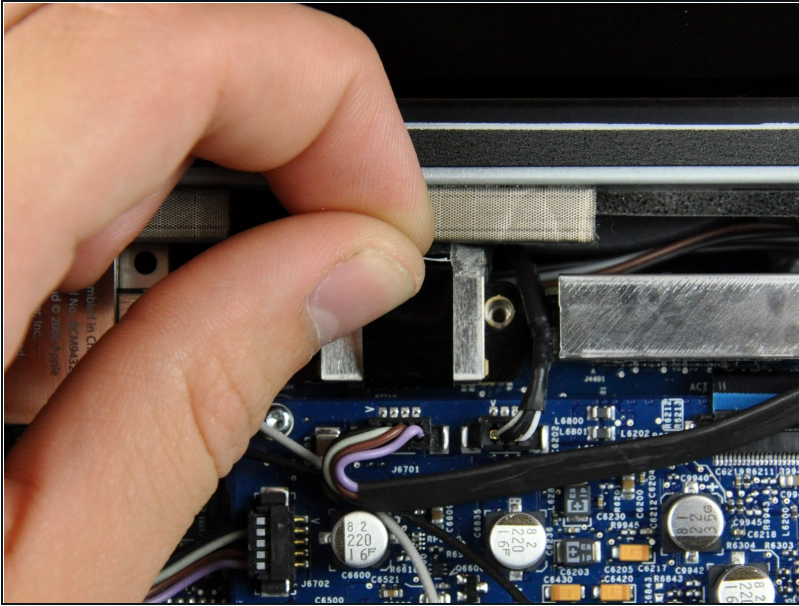
- Pull the LCD temperature sensor connector straight up out of its socket on the logic board.
 - If necessary, de-route the LCD temperature sensor cable from behind the logic board.
- ⓘ When you remove the LCD, check the routing of the LCD temperature display cable. On reinstalling the display, be sure this cable does not block one of the bottom screws for the front bezel.

Step 8



- Remove the two 5.3 mm T6 Torx screws securing the data display cable to the logic board.

Step 9



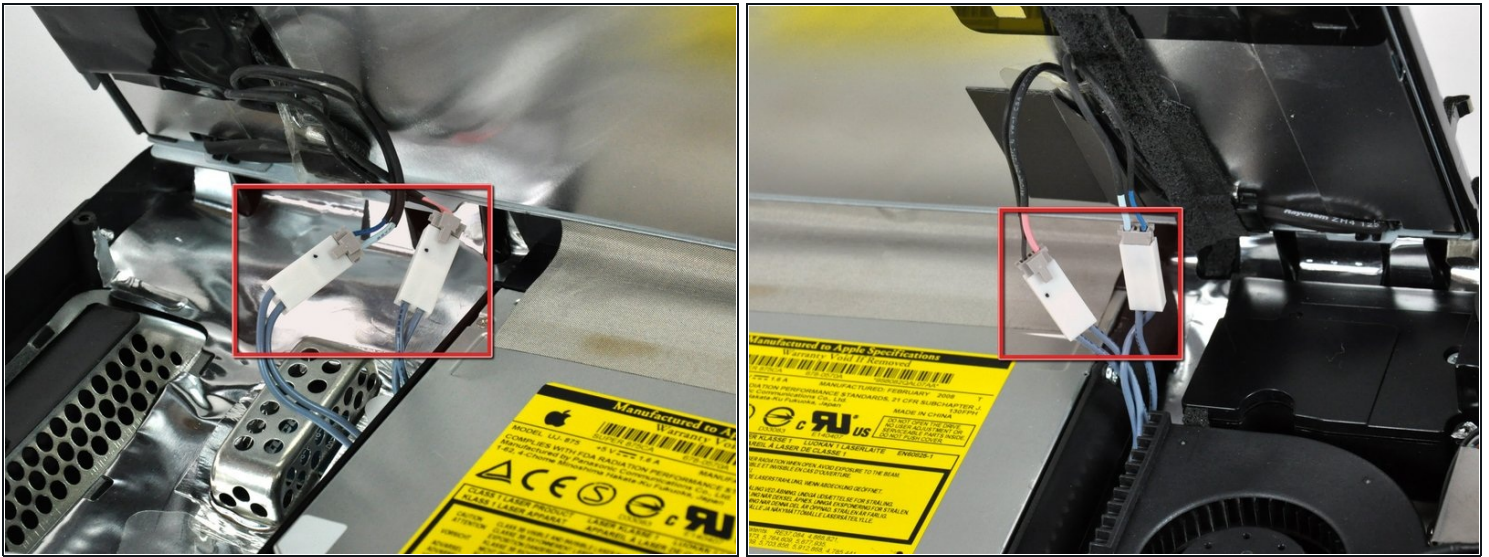
- Use the attached black tab to pull the data display cable connector away from the logic board.

Step 10



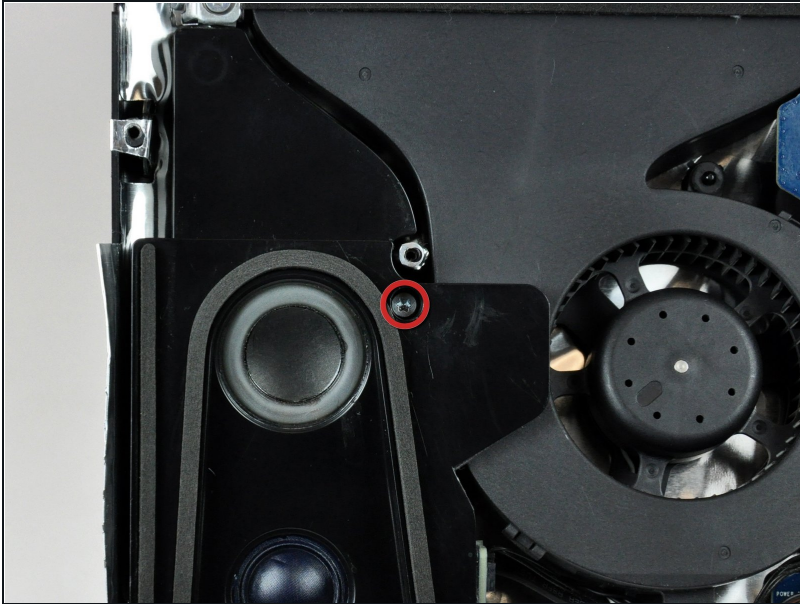
- Remove the eight 12 mm T8 Torx screws securing the display panel to the rear case.
 - ⓘ Depending on the age of your driver, a T9 Torx bit may fit better.
- Lift the display panel from its left edge and rotate it toward the right edge of the iMac.

Step 11



- With the display panel still lifted, disconnect the four inverter cables.
- ☑ During reinstallation, place the four inverter cable connectors in voids between components attached to the rear panel so the display panel will sit flush.
- ⓘ During reassembly, the order of the inverter cables is interchangeable within each socket.
- If you are replacing a hard drive and have an extra set of hands, it is possible to reach in and remove the drive without disconnecting anything but the LCD temp and display connector in the previous step with the LCD in its propped position.

Step 12 — CPU Fan



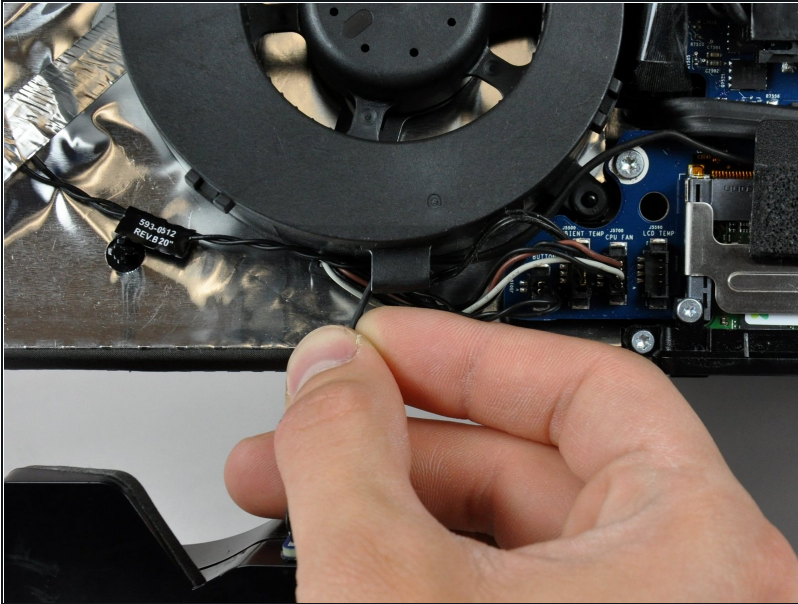
- Remove the single 28 mm T10 Torx screw securing the left speaker to the rear case.

Step 13



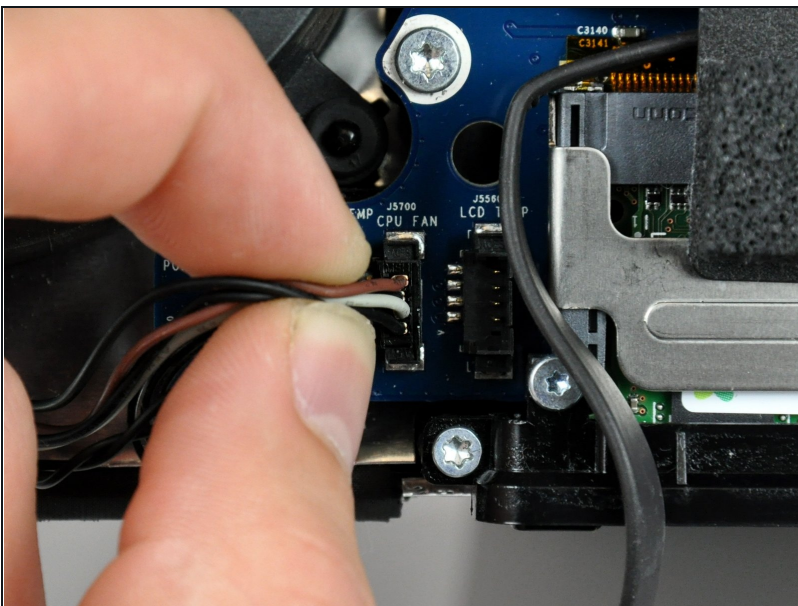
- ⚠ The left speaker and ambient temperature sensor are still attached to the logic board.
- Lift the left speaker out of the rear case.

Step 14



- If necessary, de-route the CPU fan and ambient temperature sensor cables from the clip on the CPU fan.
- ① Let the left speaker hang down from the iMac, with cables still connected, while removing your CPU fan.

Step 15



- Disconnect the CPU fan connector from the logic board by pulling it straight up from its socket.

Step 16



- Gently lift the CPU fan out of the rear case, minding any cables that may get caught.
- ★ When reassembling your iMac, be sure the strip of foam near the top of the CPU fan does not get folded inward. It should rest on the surface of the CPU fan. We recommend using a credit card or another thin tool to hold the strip of foam clear of the CPU fan.

To reassemble your device, follow these instructions in reverse order.