



# Samsung Galaxy J3 Middle Frame Bezel Replacement

This will fix the "camera cracked" look when taking pictures.

Written By: Makayla Williams



---

## INTRODUCTION

The plastic covering over the camera can sometimes crack or break off completely. This guide will show you how to replace the middle frame bezel including the camera cover.

---



### TOOLS:

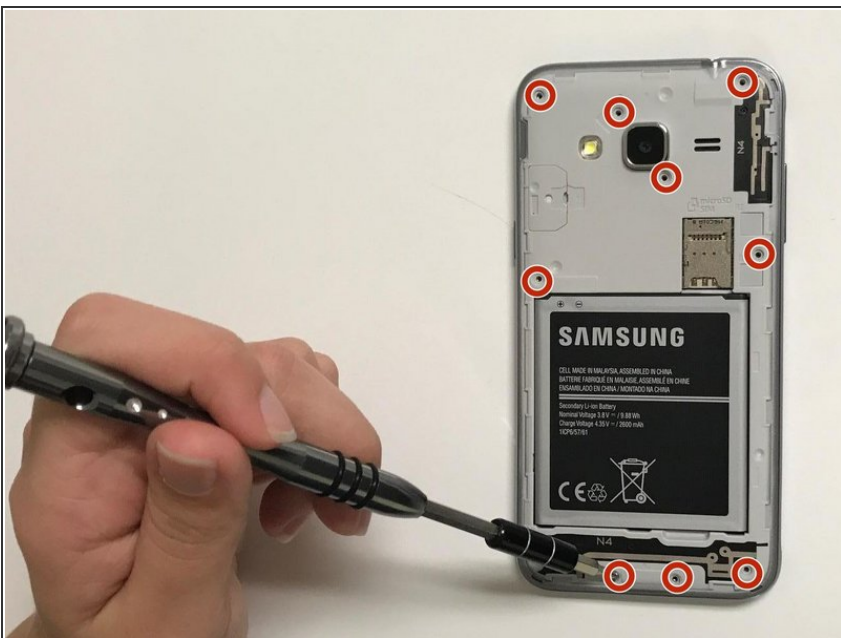
- [Metal Spudger](#) (1)
  - [Phillips #000 Screwdriver](#) (1)
-

## Step 1 — Middle Frame Bezel



- Separate the back casing from the phone by carefully using your fingers to pry it apart.

## Step 2



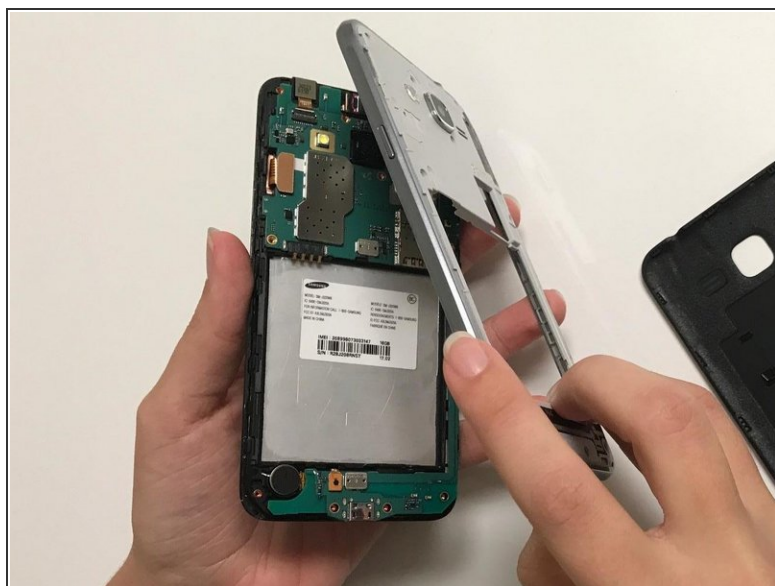
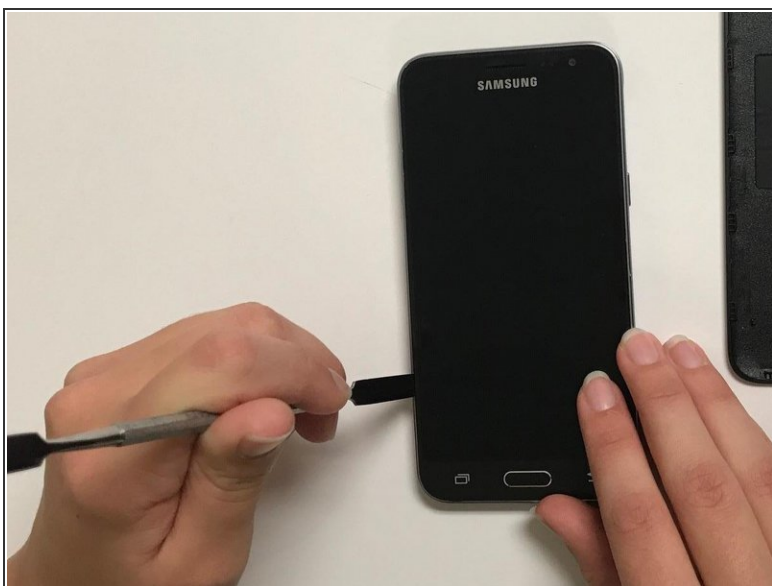
- Remove all 11 screws by using the J000 Phillips head from the 64 Bit Driver Kit.

### Step 3



- Remove the battery by gripping on and pulling up.

### Step 4



- Use the flat side of the metal spudger to remove the middle frame bezel, and replace.

⚠ Do not use a wrenching motion while performing this step. The screen may crack.

To reassemble your device, follow these instructions in reverse order.